

# New Intercity Fleet

## Springwood to Lithgow Rail Corridor Modifications

### Community Notification – Katoomba Station

The NSW Government is delivering a New Intercity Fleet to replace trains carrying customers between Sydney and the Central Coast, Newcastle, the Blue Mountains and the South Coast.

The new trains will feature:

- wider seats with arm rests, tray tables and high seat backs
- two-by-two seating for extra room and comfort
- improved accessibility including wheelchair access and accessible toilets
- improved customer information through digital information screens and announcements
- dedicated spaces for luggage, prams, bicycles and wheelchairs
- charging ports for electronic devices
- CCTV and help points
- modern heating and air conditioning

### Project overview

Modifications are needed along the rail corridor between Springwood and Lithgow stations, including minor modifications to the Ten Tunnels Deviation (between Newnes Junction and Zig Zag stations) to allow the New Intercity Fleet trains to service customers all the way to Lithgow.

The modifications, which were always part of the New Intercity Fleet project, ensure the Blue Mountains Line meets modern standards and is consistent with the rest of the electrified rail network.

### Upcoming work

5am Saturday 7 September to 10pm Sunday 8 September 2019

During this period, work will take place on the following activities at Katoomba Station:

- Pile installation for platform extension
- Overhead wiring structure installation
- Removal of redundant structures
- Overhead wire transfer
- Service relocation and investigation

All work will be carried out within the rail corridor.

Construction vehicles will access the site via **Goldsmith Place and Bathurst Road**.

Please note, Sydney Trains and other contractors will also undertake work at Katoomba Station on this weekend.

To ensure the safety of customers and staff, this work will be completed during scheduled Sydney Trains trackwork. Train services will be affected.

Please contact Transport Info on **131 500** or visit **transportnsw.info** for more information.

## Standard construction hours

Standard construction hours are **7am to 6pm Monday to Friday**, and **8am to 1pm Saturday**.

For the safety of staff, rail customers and the community, some work will be completed outside standard construction hours.

## Equipment:

The following equipment will be used to complete the work:

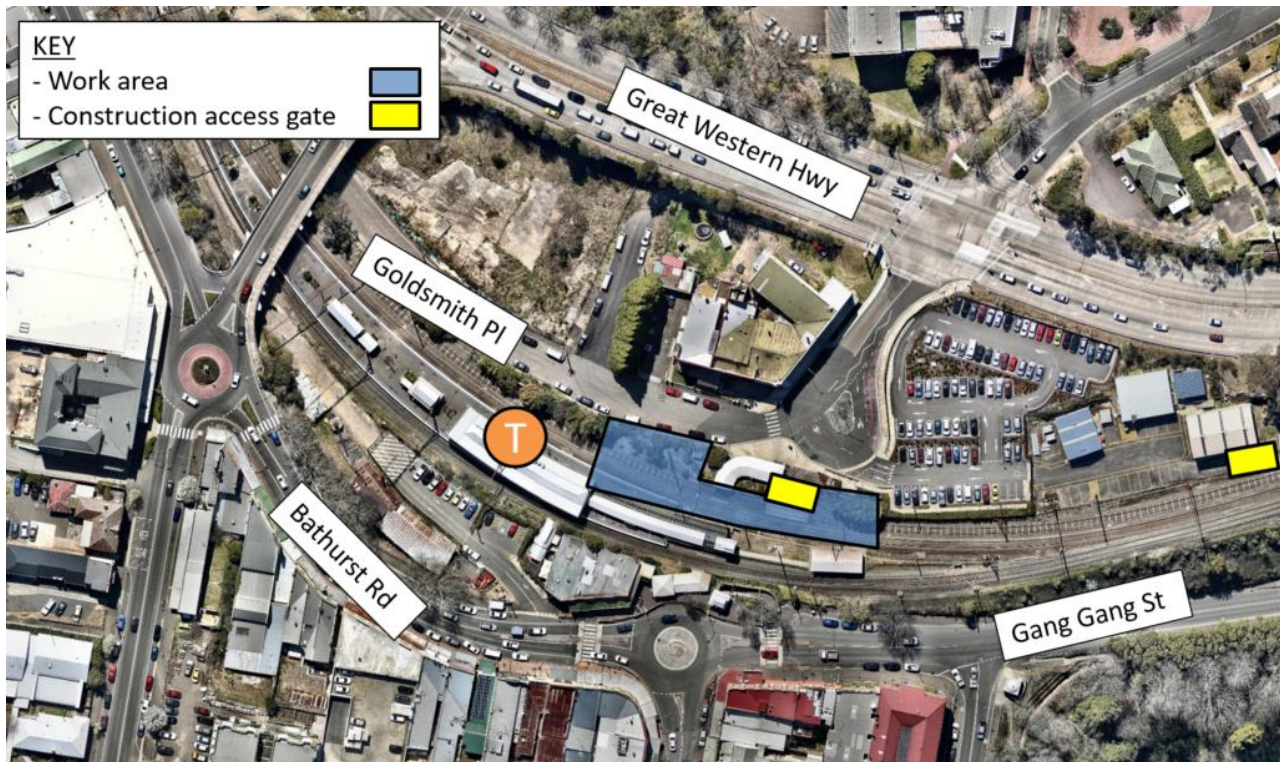
- Construction vehicles
- Excavators with piling attachments
- Delivery trucks
- Jackhammer
- Plate compactors
- Mobile crane
- Elevated work platforms
- Hand drills
- Hand tools
- Excavator

## What you may notice

Every effort will be made to minimise construction impacts to the local community.

The work may be noisy at times, however we will take every possible step to reduce noise like turning equipment off when not in use.

## Map of work area – Katoomba Station



This document contains information about public transport projects in your area. If you require the services of an interpreter, please contact the Translating and Interpreting Service on **131 450** and ask them to call the Transport Projects Division on **(02) 9200 0200**. The interpreter will then assist you with translation.