

Capertee

Village Improvement Plan



Introduction

The Capertee Village Improvements Plan aims to strengthen Council's partnership with the rural village of Capertee and promote community cooperation and engagement by implementing a shared direction for the future, based on prioritised and practical solutions derived from identified issues within the community.

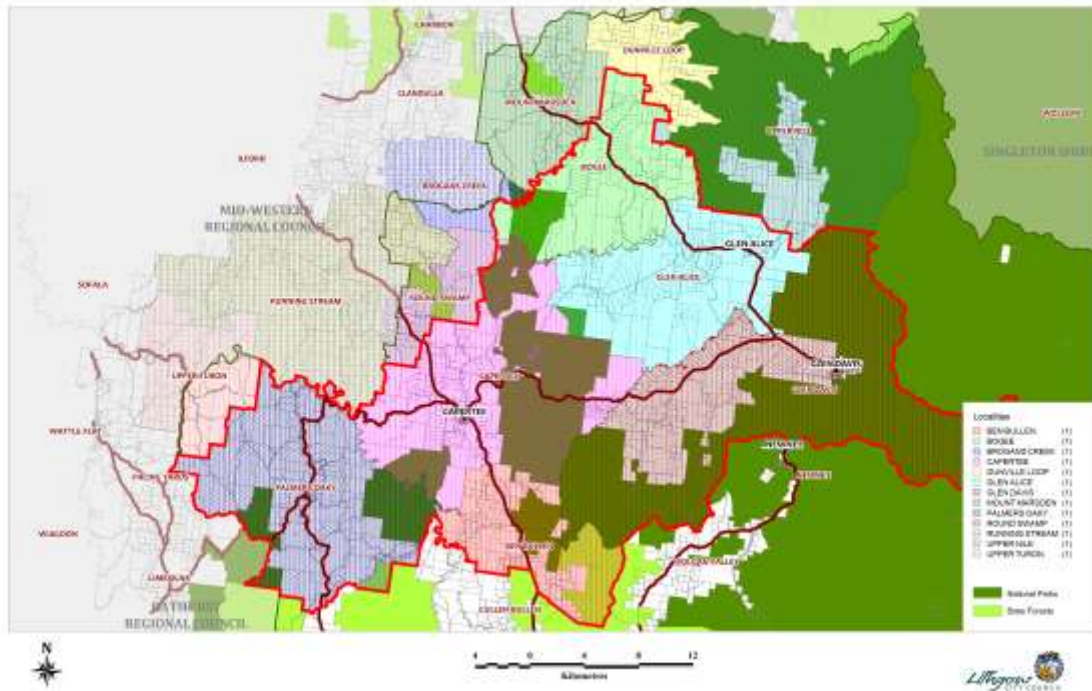
The concept of developing a Village Enhancement Program has been identified within the Community Strategic Plan 2026. The Capertee plan has been developed in response to a request from the Capertee Progress Association at the community information session held on 26 April 2012 at Capertee for the Integrated Planning and Reporting Framework to hold further meetings to discuss ways to develop the village of Capertee.

The objectives of the Village Enhancement Program are:

1. Placemaking – by enhancing community facilities to increase community identity, spirit and sense of place;
2. Community Development – through encouraging opportunities for community interaction to enhance community well-being and village life;
3. Environmental Sustainability – by increasing the environmental sustainability of rural village communities;
4. Economic Development – by supporting rural village communities to identify and develop growth and employment opportunities;
5. Infrastructure Services – by providing sustainable infrastructure to support current and future needs of rural village communities, and
6. Partnerships – by strengthening relationships between rural village communities and council.

The Plan includes an action plan which details the initiatives to be implemented in Capertee over the coming years in a joint partnership between Council, the Capertee community, business and government stakeholders.

CAPERTEE AND SURROUNDING LOCALITIES



Capertee Profile

The Capertee Village is considered to be the “northern gateway” of the Lithgow LGA. Situated on the Castlereagh Highway, the village services a number of localities and hamlets in the surrounding area including: Ben Bullen, Running Stream, Turon, Palmers Oaky, Glen Davis, Glen Alice and Bogee. (MAP)

Following is a demographic snapshot of the Capertee and surrounding areas from the 2011 Australian Bureau of Statistics (ABS) Census of Population and Housing. No comparison is available with the 2006 and earlier censuses due to the low population count. This 2011 snapshot of Capertee Village and part of the surrounding area it services will however provide useful baseline data for comparison with future censuses.

The snapshot data for Capertee includes the following localities or part thereof: Palmers Oaky, Dark Corner, Ben Bullen, Round Swamp, Running Stream, Airly and the surrounds of Cullen Bullen. The village of Cullen Bullen is a separate State Suburb Collector District.

2011 Census Snapshot

Demographic	Capertee	Lithgow LGA %	NSW %
Population	372	20,160	6.917m
Male	201 (54%)	51%	49%
Female	171 (46%)	49%	51%
Median Age	48	42	38
Families	97		
Average children per family	1.9	1.9	1.9
Children 0-4	3.5%	6.3%	6.6%
Children 5-9	7%	6%	6.3%
Young people 10-19	12.9%	12.7%	12.7%
People aged 65⁺	21.1%	18.1%	14.7%
Aboriginal and Torres Strait Islander People	22 people (5.9% of total pop)	901 people (4.5% of total pop)	2.5% of total pop
Median Age of Aboriginal and Torres Strait Islander People	43	20	21
All private dwellings	269		
Average people per household	2.1	2.3	2.6
Median weekly household income	\$715	\$896	\$1,237
Median monthly mortgage repayments	\$1,153	\$1,452	\$1,993
Media weekly rent	\$100	\$170	\$300
Average motor vehicles per dwelling	2.3	1.7	1.6

Table 1: Source data – ABS 2011 Census QuickStats

The Census Snapshot shows that the Capertee area is similar to the rest of the Lithgow LGA. However, Capertee does have significantly more men than women and there are significantly less young children and more people aged 65⁺ than in Lithgow as a whole. Income is lower than the Lithgow average although housing costs are also comparably lower.

Community Consultation

Survey

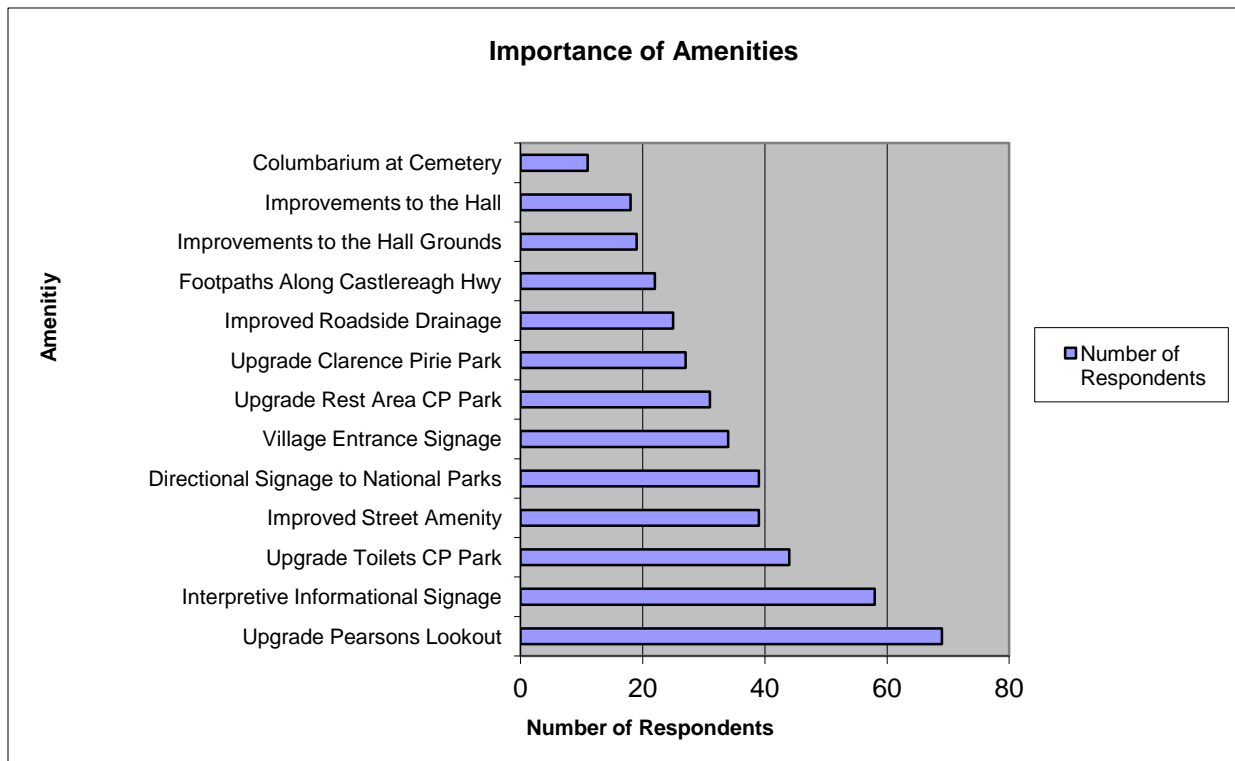
Council undertook a community survey in the Capertee area in the first half of 2012 with completed surveys returned by 31 July 2012. Over five hundred and sixty two surveys were mailed out, copies were made available to customers of the Royal Hotel and the Service Station/General Store and downloadable copies of the survey were provided on Council's website.

One hundred and seven completed surveys were returned which is considered to be a high return rate for a small locality. Of those who responded, sixty were full or part-time residents of the Capertee area, forty three were property owners in the area and thirty one owned businesses within the area.

The following items were identified by survey respondents as priorities for improvement in the Capertee Village.

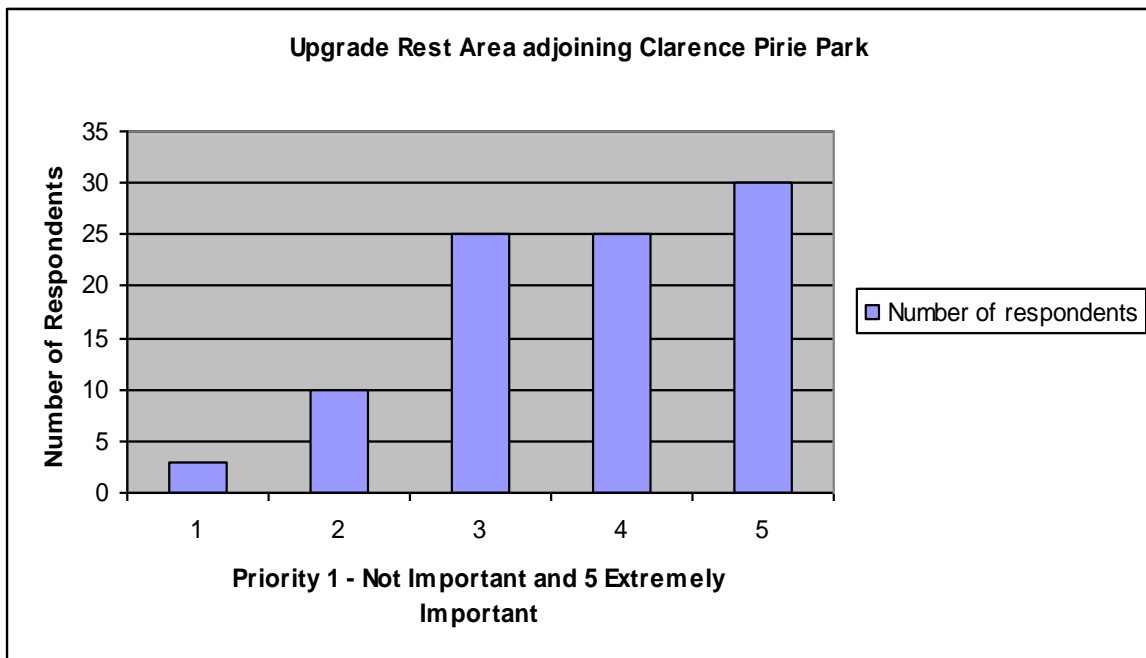
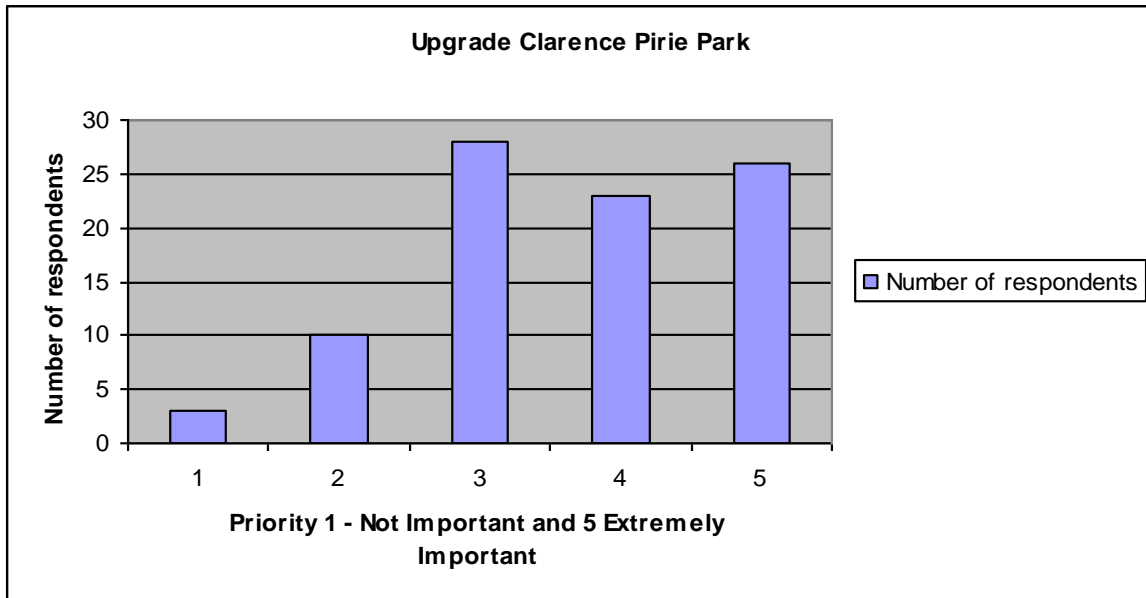
Overall Priorities

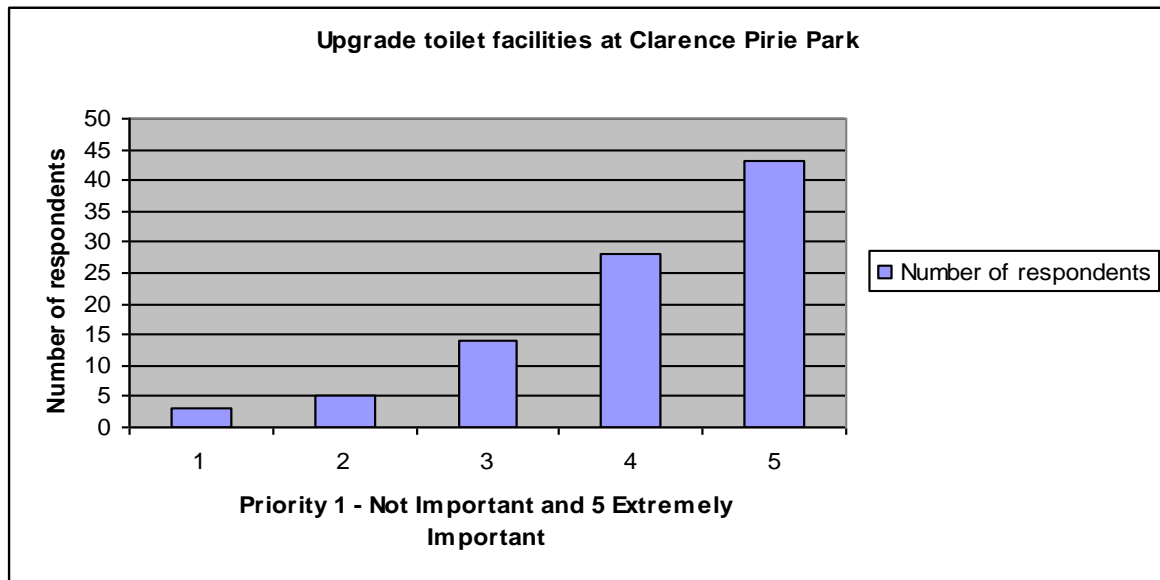
On a scale of 1-5, with one being not important and five being extremely important, rate your level of importance for these actions.



Survey Responses on Clarence Pirie Park and Rest Area

The survey respondents highlighted the importance of Clarence Pirie Park and the adjoining rest area to the town and to the many drivers and visitors who stop and use the facilities. It is the gateway to Capertee and should be improved to encourage people to stop and enjoy.





There were many suggestions for improvement to the park and rest area with the most common being:

Improve garbage facilities

Including more and larger bins and improved garbage collection service.

Upgrade the rest area road surface

Including fixing potholes, improving drainage and tarring the road to reduce dust.

Improve Street Lighting and Lighting in the park

To improve safety and amenity.

Replace Toilets

This was the highest priority for the community who were concerned about the inadequacy of the current toilet facilities to meet the needs of residents and visitors. Survey respondents are looking for a new and modern toilet facility that is cleaned regularly and has adequate lighting.

Recreational/Play area

The park is often used by children and would benefit from the installation of children's play equipment, fenced recreational areas that are both child and pet friendly and BBQ facilities. Improved landscaping was also brought up, as well as a dog 'off leash' area.

Survey Responses on Other Issues

Signage/Information

Signage within the village and to the Capertee Valley were a high priority for survey respondents. Issues raised include:

- Installation of a kiosk/information booth identifying points of interest in the area.
- Better signage to Pearsons Lookout and visitor map of Capertee valley including signage promoting birdlife and bush activities.
- Interpretative signage at Clarence Pirie Park.
- Need for heritage and interactive signage

Pearsons Lookout

Pearsons Lookout was another high priority for the community, and the issues raised included:

- The road to the lookout needs fixing and lookout upgrading
- Safety issues accessing lookout
- Needs a map showing highlights of area and Capertee Valley.

Other Issues

- Remove and improve old petrol station
- Main St Capertee needs beautification including planting trees, removing rubbish and unsightly vehicle wrecks and improving the streetscape generally.
- Improve roadside drainage
- Upgrade footpaths
- Upgrade the railway station
- Upgrade and maintain roads to Glen Alice and Glen Davis and create a tourist route.
- Create an archaeological precinct including Newnes/Lithgow and Capertee.

Changes people would like in next 10-20 years

People were asked to nominate the changes they would like to see in the future. The most common responses were:

- Remove the constraints on development of land within the village but retain the village identity
- Encourage population growth and young families
- Promote tourism and highlight the history and culture of the area, including indigenous culture
- Promote a tourist drive through the Capertee Valley to Mudgee and Rylstone
- Upgrade mobile phone reception
- Road safety – upgrade roads and install speed camera in town
- Upgrade camping facilities at Glen Davis
- Provide rate rebates to those who don't receive Council garbage services
- Promote ecotourism
- Constrain mining and stop mining companies from draining the river which is impacting on fishing
- Restrict 5 acre subdivisions in valley
- Restrict mining including coal seam gas traffic concerns with speeding and trucks through village
- Keep the Capertee tip open.

Community Consultations

On 26 April 2012, Council held a community information session at the Capertee Memorial Hall as part of the Integrated Planning and Reporting Framework. This meeting was attended by members of the Capertee Progress Association and a number of issues relating to the village were discussed.

Following this meeting, Council resolved to develop, in conjunction with the Capertee community, a Village Improvements Plan.

A subsequent meeting was held on 12 June at the Royal Hotel with representatives of Capertee Progress Association, Capertee Valley Alliance and the community.

Priority areas identified from these meetings were:

- Roadside drainage
- Footpaths
- Streetscape amenity
- Upgrading of Clarence Pirie Park
- Upgrading of toilet facilities in Clarence Pirie Park
- Interpretive/Informational Signage
- Directional Signage
- Village Entrance Signage
- Improvements to the Hall
- Improvements to the Hall Grounds.
- Upgrading of Pearsons Lookout
- Installation of a Columbarium at the Cemetery

References and Recommendations in Current Council Plans and Reports Regarding the Capertee Area

A review of Council plans and studies highlights a number of references to Capertee Village and the Capertee Valley. A number of the issues raised and recommended actions are consistent with the issues raised by the community in the survey and consultation.

Lithgow Principal Local Environmental Plan 2013

Recommendation:

- Modify the zoning of land in the villages of Capertee, Rydal, Tarana and Lidsdale to consolidate village zoned lands and provide for large lot residential growth to support each village commensurate with its role in the settlement hierarchy (Page 1).

Council Economic Development Strategy 2010-14

Recommendation:

- Opening up the northern part of the LGA through development of tourism infrastructure in the Capertee Valley, particularly given the amount of 'weekender' traffic which passes through the area to/from the Mudgee region.
- Developing the Capertee – Glen Davis – Glen Alice – Rylstone road as a 'tourist drive' (Page 91).

Council Ageing Strategy 2012

Identified:

- That people in Capertee find it difficult to get services due to remoteness and lack of staff and there are no visiting GPs at Capertee with people having to travel to Portland and Lithgow.

Council Open Space and Recreation Needs Study 2010

Identified:

- The need to undertake further consultation in the villages of Cullen Bullen, Rydal and Capertee to establish priorities for village enhancement and promotion (Page 6).
- The lack of informal sport opportunities in this area, as such, a multi-purpose court space, preferably at Clarence Pirie Park (Page 45).

Council Strategic Asset Management Plan 2022

Identified:

- The need to develop parks and gardens to meet current and future community needs. Develop Clarence Pirie Park, Capertee, and adjoining lands to cater for high use by visitors and locals (Section 3.2.9 Parks and Gardens).

- Budget allocations for: (page 55)
Capertee Hall: Internal Painting
Public Toilets
Village Footpaths
Village Drainage.

Council Tourism Destination Management Plan 2012

Refers to the Heritage Development Control Plan Study which identified:

Opportunities for the introduction of significant conservation areas across the LGA, including Capertee which have the potential to attract visitors and provide product for heritage based tourism (Page 45).

A 2009 survey of businesses directly and indirectly involved in tourism identified the following major areas that should be developed or improved:

- More cafes and restaurants
- More promotions
- Improved signage
- Improved awareness and promotion of such areas as Hassans Walls, Lake Lyell, Lake Wallace, Wolgan and Capertee Valleys
- Cultural activities such as improvements to museum and more arts activities
- Improvements to roads infrastructure
- Greater variety of shopping.

Issues that need to be addressed from a tourism perspective are: (see Page 140)

- Capitalising on the scale of the Valley – how to compare it to the Grand Canyon and providing a 'photo opportunity' for travellers who seek-out 'biggest / best' type experiences
- Improved / updated directional, distance and tourist route RMS signage from Capertee, Kandos and Rylstone
- Improve access to attractions and activities, including improved signage and information, particularly to and at track heads for walking and 4WD trails
- Increased investment in National Park infrastructure including expanded facilities at Coorongooba, opening the Capertee National Park and Mugii Murum-ban SCA
- Positioning Capertee Village as the service centre for the Valley – encouraging travellers to purchase supplies in the village
- Building a stronger relationship with Mudgee Tourism – with Mudgee including the Valley as part of the attraction and product base of the Rylstone – Kandos area
- Protecting significant views from inappropriate development
- Positioning Capertee Village as the service centre for and gateway to the Turon
- Promoting the Turon National Park in conjunction with the Sunny Corner and Turon State Forests as 4WD destinations. Explore the feasibility of developing a 4WD touring route from the Newnes Plateau to Capertee, overnighting at the Capertee Hotel, returning

through the Turon National Park, and Sunny Corner State Forest through to Portland, (Coolamigal Road – Dark Corner).

Council Cultural Plan 2008-13

Identified:

The need to undertake further consultation in the villages of Cullen Bullen, Rydal and Capertee to establish priorities for village enhancement and promotion (Page 3).

General upgrade of Clarence Pirie Park including:

- Installation of a gas or solar BBQ
- Develop a leash free area for travellers and locals.

Action Plan

The following Action Plan has been developed from the issues raised by the community and includes some works currently underway by Council or others. Some actions are dependent on the receipt of external funding but where this is not forthcoming, the actions will be considered in future Council budget deliberations and works' programs.

Item	Recommended Actions and Priority	Actual/ Estimated Cost where known	Estimated Timeframe	Current Status	Comment /Responsibility
1. Clarence Pirie Park	HIGH PRIORITY Upgrade Toilets	\$110,000 in 2014/15 budget comprised of \$20,000 Community Building Partnership Funding and \$90,000 Council funds.	First half 2014/15	Underway Quotes being assessed and consultation undertaken with local community on design. Likely completion first half 2014/15.	Environment and Development/Community and Culture Jim Nichols and Matthew Johnson are project managing. Quotes sourced and there will be sufficient funds for a two cubicle accessible toilet with baby change facility. The project will include associated upgrade to lighting and water supply. Strategic Planning Note that the park is on Crown Land reserved for railway purposes. Council has had a lease, now expired, over part of the reserve. It appears that the lease did not cover the land which contains the toilet block.

Item	Recommended Actions and Priority	Actual/ Estimated Cost where known	Estimated Timeframe	Current Status	Comment / Responsibility
					It is recommended that Council renegotiate the lease for the entire park, including the toilet block area.
	HIGH PRIORITY Replace softfall under playground equipment		Immediate	Referred to Council Recreation Supervisor for action.	Operations Group Existing softfall is severely degraded.
	HIGH PRIORITY Picnic tables MEDIUM PRIORITY Install two BBQ's	\$5,000 \$10,000		Not yet programmed	Operations Group To possibly be funded from toilet project. If not, to be considered for inclusion in Council's current or future works' program. May be included in Voluntary Planning Agreement under negotiation
	MEDIUM PRIORITY Improved landscaping	Not costed		Not yet programmed	Operations Group There may be some funds left over from toilet project for this. If not, to be considered for inclusion in Council's current or future works' program.

Item	Recommended Actions and Priority	Actual/ Estimated Cost where known	Estimated Timeframe	Current Status	Comment / Responsibility
	HIGH PRIORITY Interpretative Signage			Complete	Visitor Centre Two interpretive signs installed in park first half 2013/14.
	HIGH PRIORITY Improve garbage facilities	Not costed	To be undertaken before end of 2014.	Underway	Environment Team New waste and recycling wheelie bins about to be ordered. Consideration being given to placing a skip bin during periods of high visitation including Easter and Christmas.
	HIGH Priority Upgrade lighting in park	Not costed			Environment and Development/Community and Culture Lighting upgrade around toilets to be included in new toilet project. Need for further lighting in park to be assessed.
2. RMS Rest Area	MEDIUM PRIORITY Upgrade rest area road surface, landscaping	Not costed			Strategic Planning/Operations The poor state of the rest

Item	Recommended Actions and Priority	Actual/ Estimated Cost where known	Estimated Timeframe	Current Status	Comment / Responsibility
	and lighting.				<p>area impacts on the amenity of the adjoining park.</p> <p>The Rest Area is Crown Land for railway purposes and not under Council control. Considering a long term lease subject to the RMS upgrading the site prior or providing funding to Council for upgrade.</p>
3. Pearsons Lookout	Improve access and safety from highway		30 June 2014 completion	Largely Complete	<p>Operations Roads and Maritime Services (RMS) have sealed highway verge, carpark and access road to lookout.</p> <p>Safety signage and road marking to be finalised by RMS before end of September 2014.</p>
	Works at lookout	\$60,000		Complete	<p>Community and Culture Lookout has been re-sealed, obelisk removed and new heritage fencing installed inside vehicle barrier.</p>

Item	Recommended Actions and Priority	Actual/ Estimated Cost where known	Estimated Timeframe	Current Status	Comment / Responsibility
	Place Signage			Largely Complete	Community and Culture Council has installed a new sign at base of access road to lookout. TASAC application has been submitted for tourism signage to lookout.
	Interpretative signage			Largely Complete	Community and Culture Interpretative signage has been installed at lookout. A panorama sign highlighting points of interest in the Capertee Valley is being developed.
	Viewing Platform and picnic table			Complete	Community and Culture Viewing platform and picnic table installed.
4. Road Sealing Capertee Valley	HIGH PRIORITY			Underway	Operations Ongoing sealing of roads in the Glen Alice and Glen Davis areas is scheduled during 2014/15.
5. Village Streetscape	MEDIUM PRIORITY Upgrade footpaths			Commenced	Operations Concrete footpath has been constructed on north side of highway from near Police station to the service station.

Item	Recommended Actions and Priority	Actual/ Estimated Cost where known	Estimated Timeframe	Current Status	Comment / Responsibility
					Further works to be identified by Operations group in consultation with Progress Association for inclusion in Council's future works' program.
	MEDIUM PRIORITY Street beautification including tree planting	Not costed		To be identified	Operations Further works to be identified by Operations group in consultation with Progress Association for inclusion in Council's future works' program.
	HIGH PRIORITY Remove rubbish from service station etc			Investigations underway	Environment and Development Group Ongoing works program of the removal of vehicles, associated junk materials and general clean up activities is being undertaken on behalf of the owner of the land.
	MEDIUM PRIORITY Improved Drainage	Not costed		To be identified	Operations Group Further works to be identified by Operations group in consultation with Progress Association for inclusion in Council's future works'

Item	Recommended Actions and Priority	Actual/ Estimated Cost where known	Estimated Timeframe	Current Status	Comment / Responsibility
					program.
6. Signage	HIGH PRIORITY Install town entrance signs			Underway	Visitor Centre Town Entry signage under design and to be installed 2014/15
	HIGH PRIORITY Install heritage and interactive signage			Complete	Visitor Centre Two totem signs installed in Clarence Pirie Park first half 2013/14.
	MEDIUM PRIORITY Information booth at Clarence Pirie park showing points of interest in area	Not costed			Visitor Centre To be referred to Council's Tourism advisory and Economic Development Committees for consideration.
7. Tourism	MEDIUM PRIORITY Promote tourism to village and Capertee Valley around themes of local history and culture, indigenous				Visitor Centre Issues to be referred to Council's Tourism advisory and Economic Development Committees for consideration.

Item	Recommended Actions and Priority	Actual/ Estimated Cost where known	Estimated Timeframe	Current Status	Comment / Responsibility
	culture and bird watching.				
	MEDIUM PRIORITY Develop and promote tourism drive through Capertee Valley to Mudgee and Rylstone.				Visitor Centre Issues to be referred to Council's Tourism advisory and Economic Development Committees for consideration.
8. Capertee Village Hall	MEDIUM PRIORITY Undertake improvements to Capertee Hall and grounds			Capertee and District Progress Association have been provided with \$2,000 Financial Assistance in 2013/14 to install new picnic tables.	
9. Improve road safety through Capertee Village	HIGH PRIORITY Community concerns about speeding vehicles in village including possible installation of speed camera to be referred to Council Traffic Committee for consideration.				Operations Group Matters to be referred to RMS. Speed reduction assessment to be undertaken.
10. Other	HIGH PRIORITY Install Columbarium at Cemetery			Completed	Operations
	MEDIUM PRIORITY			Further assessment of issues	Environment and

Item	Recommended Actions and Priority	Actual/ Estimated Cost where known	Estimated Timeframe	Current Status	Comment / Responsibility
	Upgrade camping facilities at Glen Davis			required.	Development No funds allocated in 2014/15 budget. Repairs to septic system completed in 2013/14.

References

Ageing Strategy Lithgow City Council 2012
Australian Bureau of Statistics 2011 Census QuickStats and 2011 Census Community Profiles for Capertee State Suburb Collector Districts. http://www.censusdata.abs.gov.au/census_services/getproduct/census/2011/quickstat/SSC10459
Cultural Plan 2008-13 Lithgow City Council 2008
Economic Development Strategy 2010-14 Lithgow City Council 2010
Lithgow Principal Local Environmental Plan 2013 Lithgow City Council 2013
Open Space and Recreation Needs Study Lithgow City Council 2010
Strategic Asset Management Plan 2022 Lithgow City Council
Tourism Destination Management Plan Lithgow City Council 2012