

Rydal *Village Improvement Plan*



Our Place ... Our Future

Introduction

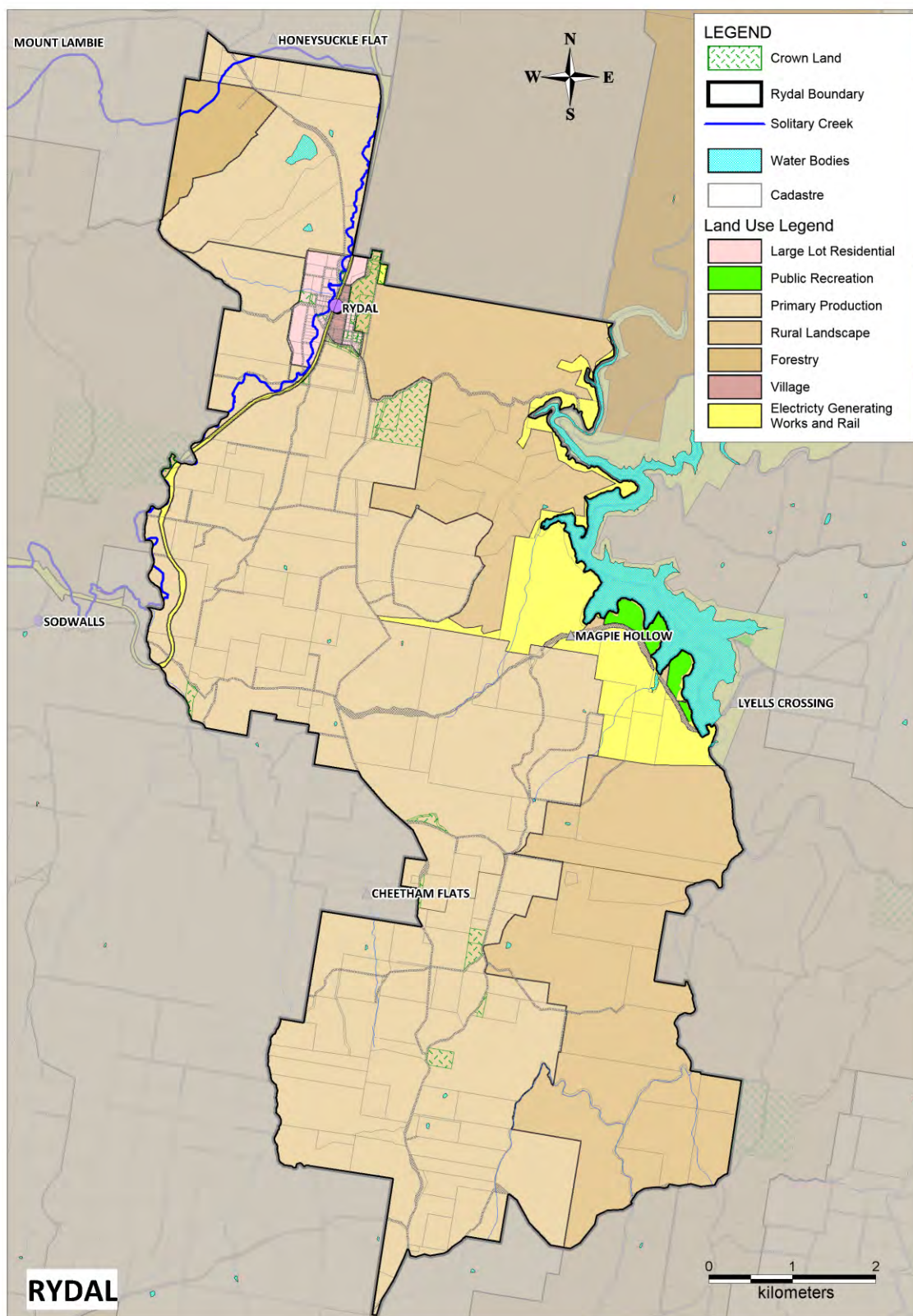
The Rydal Village Improvements Plan aims to strengthen Council's partnership with the rural village of Rydal and surrounds and promote community cooperation and engagement by implementing a shared direction for the future, based on prioritised and practical solutions derived from identified issues within the community.

The concept of developing a Village Enhancement Program has been identified within the Community Strategic Plan 2026. The objectives of the Village Enhancement Program are:

1. Placemaking – by enhancing community facilities to increase community identity, spirit and sense of place;
2. Community Development – through encouraging opportunities for community interaction to enhance community wellbeing and village life;
3. Environmental Sustainability – by increasing the environmental sustainability of rural village communities;
4. Economic Development – by supporting rural village communities to identify and develop growth and employment opportunities;
5. Infrastructure Services – by providing sustainable infrastructure to support current and future needs of rural village communities, and;
6. Partnerships – by strengthening relationships between rural village communities and council.

The Rydal Village Improvements Plan includes an action plan which details the initiatives to be implemented in Rydal over the coming years in a joint partnership between Council, the Rydal community, business and government stakeholders.

Map of the Rydal area



Rydal Profile

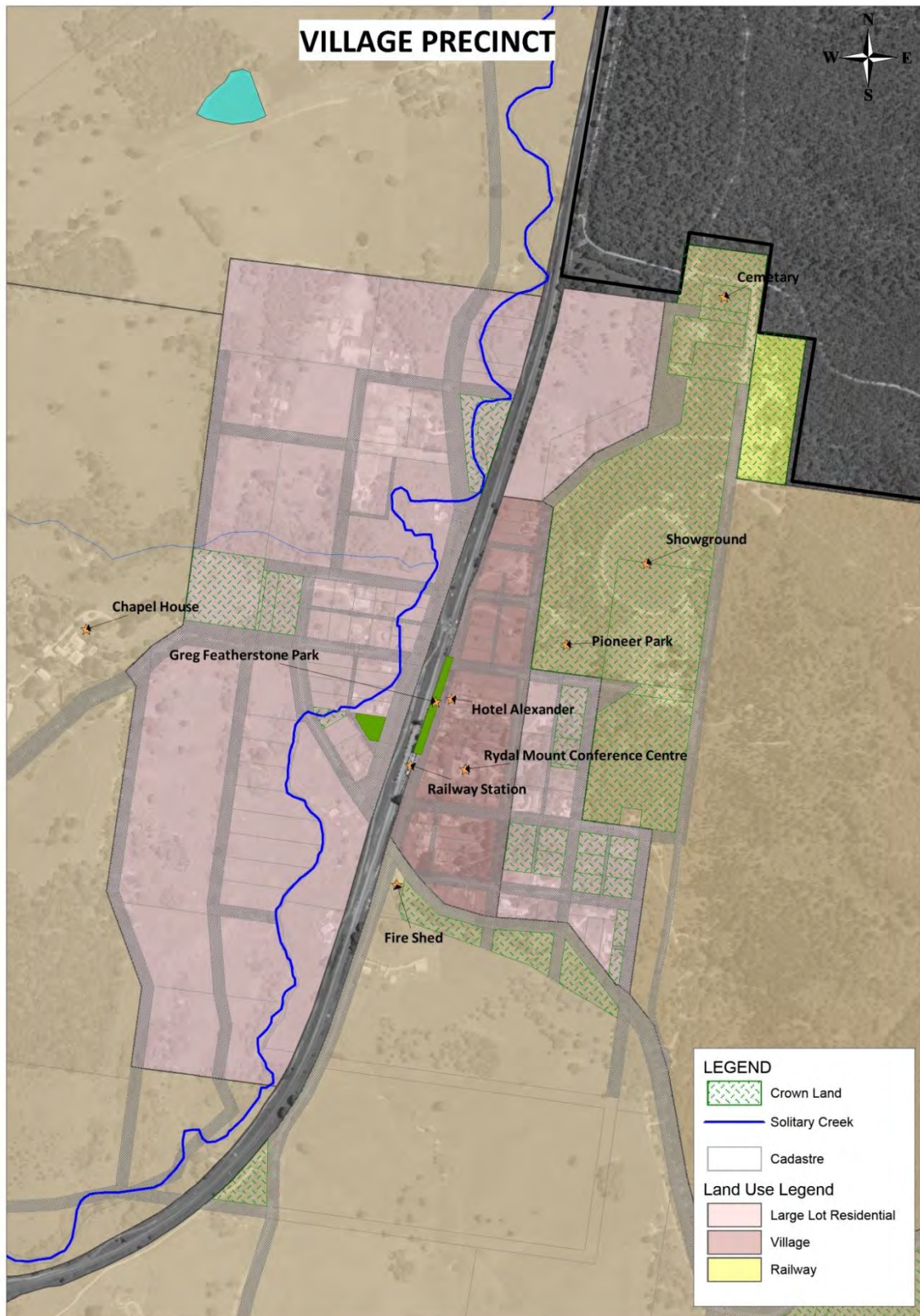
The Rydal Village is a small heritage village set in a magnificent valley with rural, farmland countryside. Situated around Bathurst street, the village boasts a number of hubs of activity including:

- Greg Featherstone Park
- Hotel Alexander
- The Showground
- Chapel House
- Rydal Railway Station
- Library
- Pioneer Park
- Rydal Mount Conference Centre
- Fire Shed
- Cemetery
- Rydal Cottage
- Rose Cottage
- Sculpture Garden
- St Matthews Church
- Rydal Union Church

In addition, the village hosts annual festivals and events including:

- Daffodils at Rydal
- Australia Day
- Rydal Horticultural and Agricultural Show
- Anzac Day

Map of the Rydal Village Precinct



Plotting some of the 'hubs of activity' using MapInfo, Lithgow City Council, 2014.

Following is a demographic snapshot of Rydal from the 2011 Australian Bureau of Statistics (ABS) Census of Population and Housing compared to the Lithgow LGA and NSW data to provide useful baseline information for comparison with future censuses.

2011 Census Snapshot

Demographic	Rydal	Lithgow LGA %	NSW %
Population	188	20,160	6.917m
Male	95 (50.5%)	51%	49%
Female	93 (49.5%)	49%	51%
Median Age	43	42	38
Families	51		
Average children per family	2	1.9	1.9
Children 0-4	11 (5.8%)	6.3%	6.6%
Children 5-9	18 (9.5%)	6%	6.3%
Young People 10-19	30 (15.8%)	12.7%	12.7%
People aged 65+	24 (12.7%)	18.1%	14.7%
Aboriginal Torres Strait Islander People	6 people (3.2% of total pop)	901 people (4.5% of total pop)	2.5% of total pop
Median Age of Aboriginal and Torres Strait Islander People	16	20	21
All private dwellings	84		
Average people per household	2.7	2.3	2.6
Median weekly household income	\$1,017	\$896	\$1,237
Median monthly mortgage repayments	\$1,672	\$1,452	\$1,993
Median weekly rent	\$0	\$170	\$300
Average motor vehicles per dwelling	2	1.7	\$1.6

Table 1: Source data – ABS 2011 Census QuickStats

Caution should be taken due to the low number of people in Rydal however the Census Snapshot shows that Rydal is similar to the rest of Lithgow but has a greater number of children and young people when compared to the Lithgow and state average. Further, there are a smaller number of people aged over 65 years than Lithgow as a whole, and income is higher than the Lithgow average, although housing costs are also higher.

Community Consultation

Council hosted a community forum on 22 June 2014 at the Rydal Showground with approximately 60 residents attending. Residents provided input into how they would like to see the village improve and the feedback received can be classed into five broad categories, including:

- Signage
- Roadwork and drainage
- Environmental
- Development and improvements
- Future vision

Signage

Signage within the village was a high priority for residents. Some of the issues raised include:

- Street names to be changed or modified to ensure ease of finding dwellings
- Safety signage to alert oncoming traffic of pedestrian areas and narrow roads
- Directional signage to be updated

Roadwork and drainage

Roadwork and drainage was also a high priority for residents. Some of the issues raised include:

- Improve roadside drainage
- Regular grading and maintenance of roads in the area
- Improve visibility in area through marking of road

Environmental

Noxious weeds, particularly blackberry, are very problematic in the community and also a high priority and needs to be addressed. Some of the issues raised include:

- Regular trimming of pine trees and mowing of edges in town
- Clearance of willow and blackberry in creek and other parts of town.
- Environmental Audit of Solitary Creek

Development and improvements

Residents highlighted the need for public toilets in the main part of town and considered this development a high priority. Other issues raised include:

- Upgrade timber bridge on Charles Street
- Upgrade pedestrian bridge at the bottom of Quarry Street
- Regular maintenance of the cemetery

Future Vision

- Encourage tourism and maintain the heritage value of the village
- Encourage small residential growth while maintaining the village feel and spacious aspect

References and recommendations in current Council plans and reports regarding Rydal

A review of Council plans and studies highlights some references to the Rydal village. The issues raised and recommendations made are consistent with the issues raised by the community at the community forum.

Lithgow Principal Local Environmental Plan 2013

- Modify the zoning of land in the villages of Rydal, Capertee, Tarana and Lidsdale to consolidate village zoned lands and provide for large lot residential growth to support each village commensurate with its role in the settlement hierarchy (Page 4).

Council Economic Development Strategy 2010-2014

- Lithgow Council understands that working with community organisations and groups is essential to achieving many of its goals relating to the community. The key network in the Rydal area is the Rydal Village Association (Page 108).

Council Tourism Destination Management Plan 2012

- Opportunities for the introduction of significant conservation areas across the LGA, including Rydal, which have the potential to attract visitors and provide product for heritage based tourism (Page 45).
- Develop and promote the Rydal Showground as a venue for a range of small exhibitions and events. As part of this a new toilet block needs to be provided (Page 159).
- Support the development of mountain bike infrastructure in the Lidsdale State Forest and work with the CTMB Club to attract mountain-bike events to the area (Page 159).
- Assist the Rydal Showground Trust to access funding to provide new amenities at the Showground and to market and promote the Showground as an event venue (Page 201).
- Encourage the Rydal community to continue with the daffodil plantings and the improvements to Pioneer Park (Page 322).
- Provide public toilets and ensure that they are well signposted from the village entry points (Page 322)
- Explore options for improving the presentation of Railway Street, in particular the area between the railway crossing and the hotel (Page 322).
- Work with Showground Trust to replace the toilet blocks and continue to improve facilities (Page 337).

Council Open Space and Recreation Needs study 2010

- A recommendation to consider providing more play opportunities in Rydal
- A recommendation to consider the need for toilets and a barbeque at Greg Featherstone Park

Council Cultural Plan 2008-2013

- Continue to provide quality programs and facilities for the community of Rydal.
- Undertake further consultation in Rydal to establish priorities for village enhancement and promotion.
- Assist the Rydal community to develop a museum within a Train Carriage telling the stories of Rydal.
- Installation of children's play equipment at Greg Featherstone Park, Rydal.
- Assist the Rydal Development Association to secure funding for an amphitheatre (Designed by local Artist, Antony Symonds) to further enhance community events at Pioneer Park.
- Support for local tourism events including Daffodils at Rydal,.

Action Plan

The following Action Plan has been developed from the issues raised at the community forum and includes some work that is currently underway by Council or others. Some actions are dependent on the receipt of external funding, but, where this is not forthcoming, the actions will be considered in future Council budget deliberations and works' programs.

Item	Recommended Actions and Priority Areas	Actual/ Estimated Costs where known	Estimated Timeframe	Area of Responsibility	Current Status	Comment
Street Signage	Change name of Market and Quarry streets to Market Street <i>East</i> and <i>West</i> and Quarry Street East and West.	Approx. \$1000	2016/17	Operations	Operations	New state policy does not permit use of 'East' and 'West' as or in street names. Refer matter to Village Association for alternative names.
	Change speed limit to 40km from Market street to Fire shed, or install warning signage advising of narrow road and pedestrians.	NIL to Council	2015/16	RMS for speed limit TALC for safety sign	Refer to RMS and TALC	Community is concerned that the current 50km speed limit on this narrow road can be too fast when cars are parked on both sides and trucks drive through.
	Replace the "50km" sign on the southern entry of the town, and install a sign at the intersection "to the highway".		Actioned	Operations Group	The 50km has been replaced. The current signage at the intersection was investigated and is adequate.	No further work required on this item.

Item	Recommended Actions and Priority Areas	Actual/ Estimated Costs where known	Estimated Timeframe	Area of Responsibility	Current Status	Comment
	Install improved tourism signage to village.	\$10,000	2016/17	Tourist Attraction Signposting Assessment Committee (TASAC)	Proposal to be considered in the 2016/17 budget process.	
	Improve visibility of the Rydal directional sign from the Great Western Highway.		Actioned	Operations Group	Further investigations have revealed that the sign is quite visible in both directions.	No further work required on this item.
	Install missing signage in Cartwright street.	\$200	2015/2016	Operations Group	Refer to Operations Group	
Environmental	Regular mowing of road verges in the village.		Ongoing	Operations Group	Refer to Operations Group	
	Remove overgrown willow and other noxious weeds in Solitary creek.	NIL to Council			Consult with Local Land Services to see if funding is available.	The creek is not Council's area of responsibility. Issues to be referred to Upper Macquarie County Council and local land services.
	Ensure that blackberry is contained on private properties.			Upper Macquarie County Council	Refer to Upper Macquarie County Council	Some residents are not addressing the blackberry requirements on their properties.

Item	Recommended Actions and Priority Areas	Actual/ Estimated Costs where known	Estimated Timeframe	Area of Responsibility	Current Status	Comment
						The Village Association to contact the Upper Macquarie County Council.
	Address noxious weed issue on Council land.		2015/16	Operations Group	Refer to Upper Macquarie County Council	The Village Association to advise Council of any noxious weed sites for action.
	Trim pine trees between the fire shed and the "50km" sign.		2015/16	Operations Group	Works scheduled to be undertaken in 2015/16.	
Road Work and Drainage	Improve drainage in Cartwright and Market streets by grading road and replacing drainage pipes.	\$30,000	2016/17	Operations Group	Refer to Operations Group	Will be considered for inclusion in the 2016/17 budget.
	Grade Stacks, Market and Quarry streets, as well as The Old Western Road.		Actioned	Operations Group	Refer to Operations Group	Note, these streets have been included in Council's regular grading program.
	Fix pot holes on Cartwright, West and Market streets.	\$1000 per day for jet patcher	Ongoing patching	Operations Group	Refer to Operations Group	

Item	Recommended Actions and Priority Areas	Actual/ Estimated Costs where known	Estimated Timeframe	Area of Responsibility	Current Status	Comment
	Widen the road at each end of the village and mark edges to increase visibility.			Operations Group	Refer to Operations Group	Will be considered for inclusion in 2016/17 budget.
	Correct drainage and level the road surface at the northern end of Greg Featherstone Park.			Operations Group	Refer to Operations Group	As this is railway land, the Village Association should contact John Hollands in the first instance.
Development and Improvements	Install public toilets on the block of land opposite the railway station.		2016/17	Environment & Development Group	Investigations are continuing.	An alternative site is being investigated.
	Upgrade the pedestrian bridge at the bottom of Quarry street.					Bridge is on private property. The Village Association advised to contact the landowners in the first instance.
	Upgrade the timber bridge on Charles street.			Operations Group	Refer to Operations Group	The timber deck has been replaced with a concrete deck.
	Replace one half of the fence at the local cemetery.			Operations Group	Refer to Operations Group	Upon investigation, the fence was observed to be in good condition.

Item	Recommended Actions and Priority Areas	Actual/ Estimated Costs where known	Estimated Timeframe	Area of Responsibility	Current Status	Comment
Future Vision	Promote Rydal as a Tourist Village			Tourism	Refer to the Tourism Advisory Committee	
	Maintain heritage value of the village			Heritage Committee	Refer to Council's Heritage Committee	

References

Australian Bureau of Statistics 2011 Census QuickStats and 2011 Census Community Profiles for Capertee State Suburb Collector Districts.

http://www.censusdata.abs.gov.au/census_services/getproduct/census/2011/quickstat/SSC10459

Cultural Plan 2008-13

Lithgow City Council 2008

Economic Development Strategy 2010-14

Lithgow City Council 2010

Lithgow Principal Local Environmental Plan 2013

Lithgow City Council 2013

Open Space and Recreation Needs Study

Lithgow City Council 2010

Tourism Destination Management Plan

Lithgow City Council 2012
