

6.5 Stage 2 Masterplan

6.5.1 Stage 2 Masterplan Priorities

Following are the key “drivers” for the Stage 2 masterplan actions and works.

- To build on Stage 1 works in the “central urban recreation and open space zone”, with additional sections of shared path to increase the amount of creekside pathway and associated amenity plantings (Planning Units FC7-East and FC7-West).
- To improve the shared path connection towards the Lake Pillans Wetlands, by extending the creekside shared path east from Burton Street (Planning Unit FC5).
- To establish a continuous shared path connection through the Lake Pillans Wetlands and Blast Furnace Park, from north to south-west (Planning Units VoCC3-North and VoCC3-South).
- To commence the limited provision of a shared creekside path in the “eastern upstream environmental zone”, between Oakey Park and Hay Street (Planning Unit FC3).
- To complete a shared path connection through the “western heritage zone”, but to varying standards and user suitability north-west from the Geordie Street causeway to Chivers Close (Planning Units FC9-South and FC9-North).
- To support new path construction with WSUD measures (mainly creekside filter strip plantings in areas of engineered or semi-natural creek channel with less riparian vegetation), and undertake appropriate stormwater quality improvement measures (mainly retrofittings) in conjunction with open space upgrading efforts.
- To undertake weed control and riparian vegetation community restoration works in the “eastern upstream environmental zone” – in conjunction with, or preferably in advance of, the development of a

shared path, recreation facilities and amenity or other plantings (Planning Units FC2, FC3, FC4, FC5 and VoCC2).

6.5.2 Stage 2 Masterplan Overview

Overview

The proposed Stage 2 path network, for the entirety of Farmers Creek through the Lithgow urban area, is shown in overview on Figure 41.

The proposed Stage 2 path works, in conjunction with the Stage 1 works and existing path network, would secure a continuous, mostly creekside, pathway from Atkinson Street in the east, to the Tourism Information Centre in the west, and continuing through to Coerwull Road in the north-west – as shown on Figure 41. Most of this route would be to shared path standard – with the exception of the existing bitumen path (not-to-standard but signposted for walker and cyclist use) and the unsealed service road, both to the north-west of Marjorie Jackson Oval, and the existing concrete path along Geordie Street (also not-to-standard but signposted for walker and cyclist use). The proposed unsealed (compacted gravel) shared path north-west from the Geordie Street causeway to Chivers Close may also be less suited to some users (such as those in mobility scooters).

Stage 2 also includes a major investment in weed control and riparian community restoration works upstream from Burton Street, in the “eastern upstream environmental zone”.

The total estimated order of costs for all Stage 2 works is over \$2,205,000, as detailed in Table 5 and Section 7.1.

Of this over \$1,390,000 is for shared path infrastructure and other “hard” works, over \$42,000 is for “soft” landscape works and amenity plantings, and over \$773,000 is for weed control and riparian vegetation community restoration.

The following description only highlights the major elements or works of Stage 2. For a summary description and location of all proposed “hard” facility works – principally the proposed Stage 2 path network – refer to the individual masterplan for each Planning Unit at Figures 42 to 51 (with

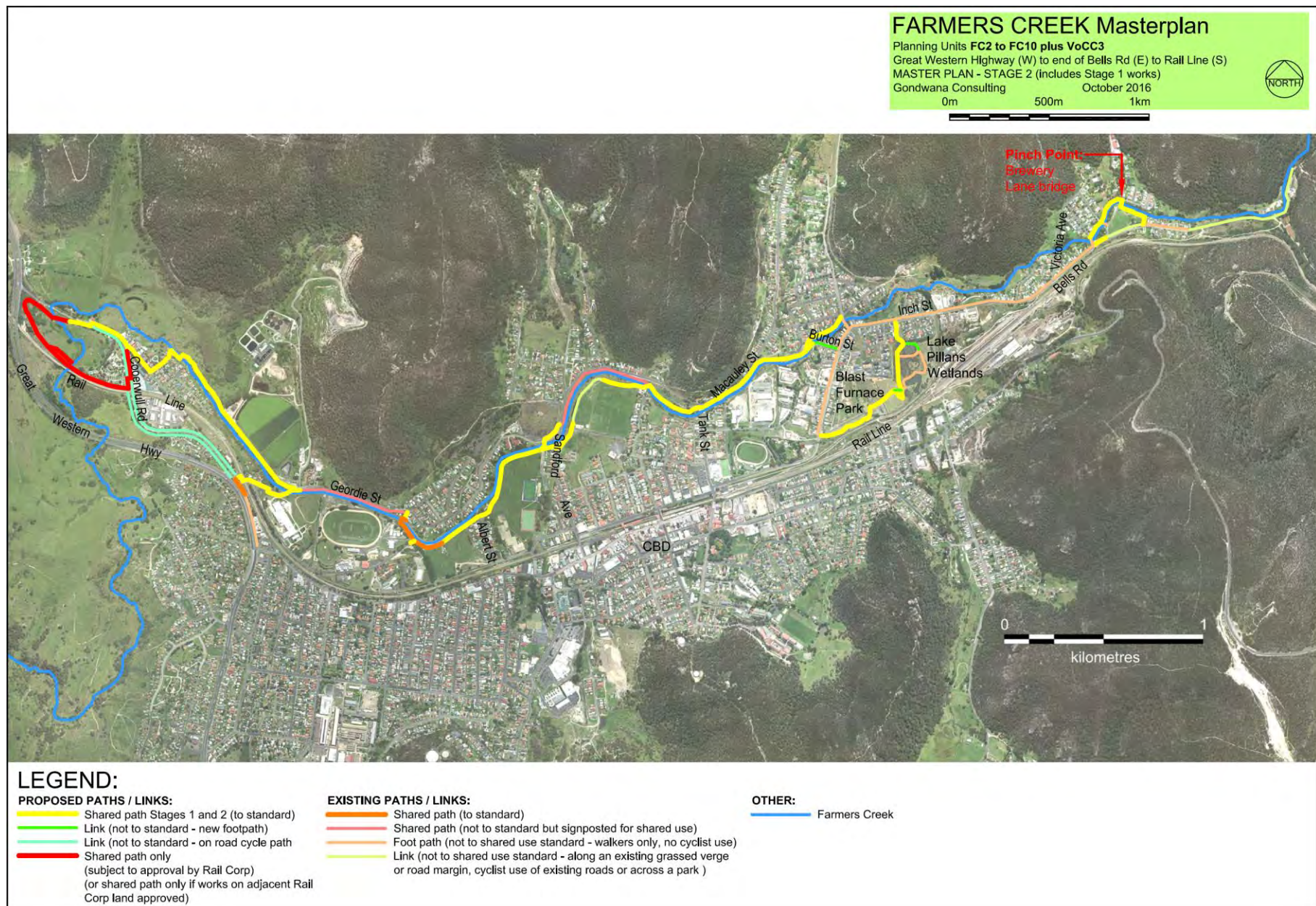


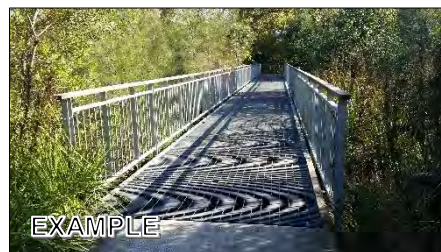
Figure 41 Stage 2 path network overview

reference to the masterplan legend at Figure 16). Note that there are no separate Stage 2 path works proposed for Planning Units FC1, FC2, FC4, FC6 and FC8-West). A detailed description of all Stage 2 works – “hard” facility works, “soft” landscape/amenity works, and weed control and natural vegetation restoration works – can be found in the Implementation and Cost Estimates Schedules in Appendix 4.

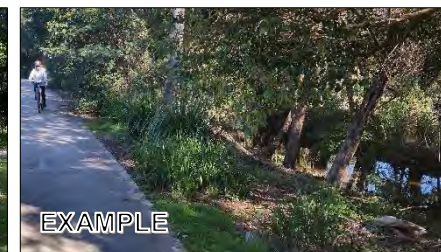
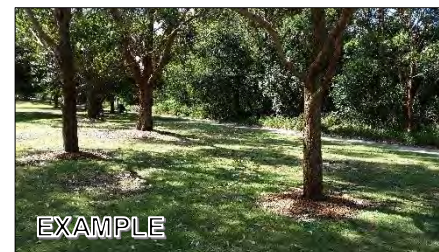
Overview Description

In the “central urban recreation and open space zone” major new sections of shared path would be developed:

- from Atkinson Street running creekside to Burton Street along the creek’s northern bank, likely requiring a significant (cumulative) length of partially elevated boardwalk (see Figure 24); and
- from the Montague Street dog park west across the existing large canal (at a new, long, bridge) and along the northside of Marjorie Jackson Oval.



The works around Marjorie Jackson Oval, in conjunction with existing bitumen path along Sandford Avenue, would also offer a “local loop path” option, for walkers, to the oval’s north and west.



Amenity plantings to enhance the presentation and appeal of this reach, and “filter strip” plantings to improve the quality of runoff to the creek channel (canal), would be undertaken in association with these shared path works. Weed control and riparian vegetation community restoration works would also occur between Burton Street and Saywell Street Park with, or ahead of, path works in this area.



A short section of shared path and a new road crossing links from the south-west corner of Marjorie Jackson Oval across Sandford Avenue, to the shared path around the northside of Glanmire Oval (as developed in Stage 1) and areas further west.

Although the creekside shared path extends to Atkinson Street in Stage 2, the Lake Pillans Wetlands and Blast Furnace Park are still not fully connected to the Farmers Creek path network. A shared path route through these attractions is completed at this stage, with upgrading of the existing switchback path on the slope up to Blast Furnace Park and path



widening/upgrading across the southern side of the main Blast Furnace heritage site. However a larger loop route to/from the creek corridor remains only partially realised (still relying on the existing north-south footpath on Inch Street).

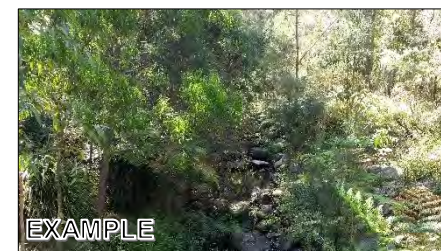
In the “eastern upstream environmental zone” a short section of stand-alone shared path is developed between Bells Road (at Bells Road Lane [West]) and Hay Street, offering a small “local loop route” option along with amenity plantings to enhance the presentation and appeal of Oakey Park. This new path includes a short bridge over a large roadside drain west of Brewery Lane. However the existing sub-standard timber plank footpath across the single lane Brewery Lane bridge remains a “pinch point” on this new link.



Elsewhere east from Atkinson Street walkers would remain reliant on existing footpaths (as in Stage 1), often well away from the Farmers Creek corridor and not to shared path standard, and cyclists would still be required to use the existing roadways.

Substantial weed control and riparian vegetation community restoration works are undertaken in the “eastern upstream environmental zone” in this stage, to:

- support the discontinuous Stage 2 path/recreation works and amenity plantings in this area;
- treat a significant upstream weed zone and source of propagules for downstream sections of Farmers Creek; and
- enhance these areas ahead of subsequent path/recreation works and amenity plantings in Stage 3.



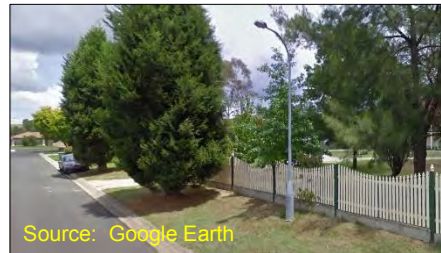
Weed control and riparian vegetation community restoration works are also carried out in the Vale of Clywdd Creek (Planning Unit VoCC2) in this stage. Downstream in Planning Units FC6 and the eastern end of Planning Unit FC7-East (from Burton Street to past the Montague Street dog park) the weed control and riparian vegetation community restoration works commenced in Stage 1 are continued into Stage 2.



In the “western heritage zone” the Stage 1 informal route beside the Sewage Treatment Plant access road, and extending to the Chivers Close footbridge, will be upgraded to an unsealed (compacted gravel) shared path, and the Chivers Close footbridge rebuilt to shared path standard.



The Stage 1 “walkers only” path north-west from the bridge to Evans Close is upgraded to shared path standard. A new shared path will be developed on the road verge in Evans Close, extending onto the carriageway (with kerb delineation/protection and signage, and the road narrowed) across the front of Methven House in order to protect the street trees and presentation of this (private) heritage site. This new shared path continues along the road verge in Fullagar Avenue to link to the Stage 1 shared path in Coerwull Road and the unsealed (compacted) section of the Stage 1 Coerwull Road shared path will be upgraded.



Stage 2 holds the same potential to develop a heritage focused loop route using the Rail Corp owned corridor (as described in Stage 1 above). If this route is to be fully realised additional upgrades to Coerwull Road – a new/upgraded shared path between the rail overpass and Fullagar Avenue – will also be warranted, and have been included in Stage 2.



Development of an on-road cycleway link, connecting the Farmers Creek shared path (at the north-western crossing on Coerwull Road) and the Tourism Information Centre, is also proposed in Stage 2. This two-way road shoulder cycleway would replace the existing southbound cycleway,

that is signposted in part at present but not marked on-ground (and largely non-existent), and would offer cyclists (only) the option of a loop route (in conjunction with the FC9 paths) to/from the Tourism Information Centre and then connecting into the remainder of the creekside or urban path networks.

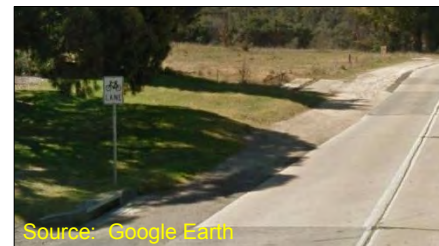




Figure 42 Masterplan FC3 – Stage 2



Figure 43 Masterplan FC5 – Stage 2



Figure 44 Masterplan VoCC3-South – Stage 2



Figure 45 Masterplan FC7-East – Stage 2



Figure 46 Masterplan FC7-West – Stage 2



Figure 47 Masterplan FC8-East – Stage 2



Figure 48 Masterplan FC9-South – Stage 2



Figure 49 Masterplan FC9-North – Stage 2

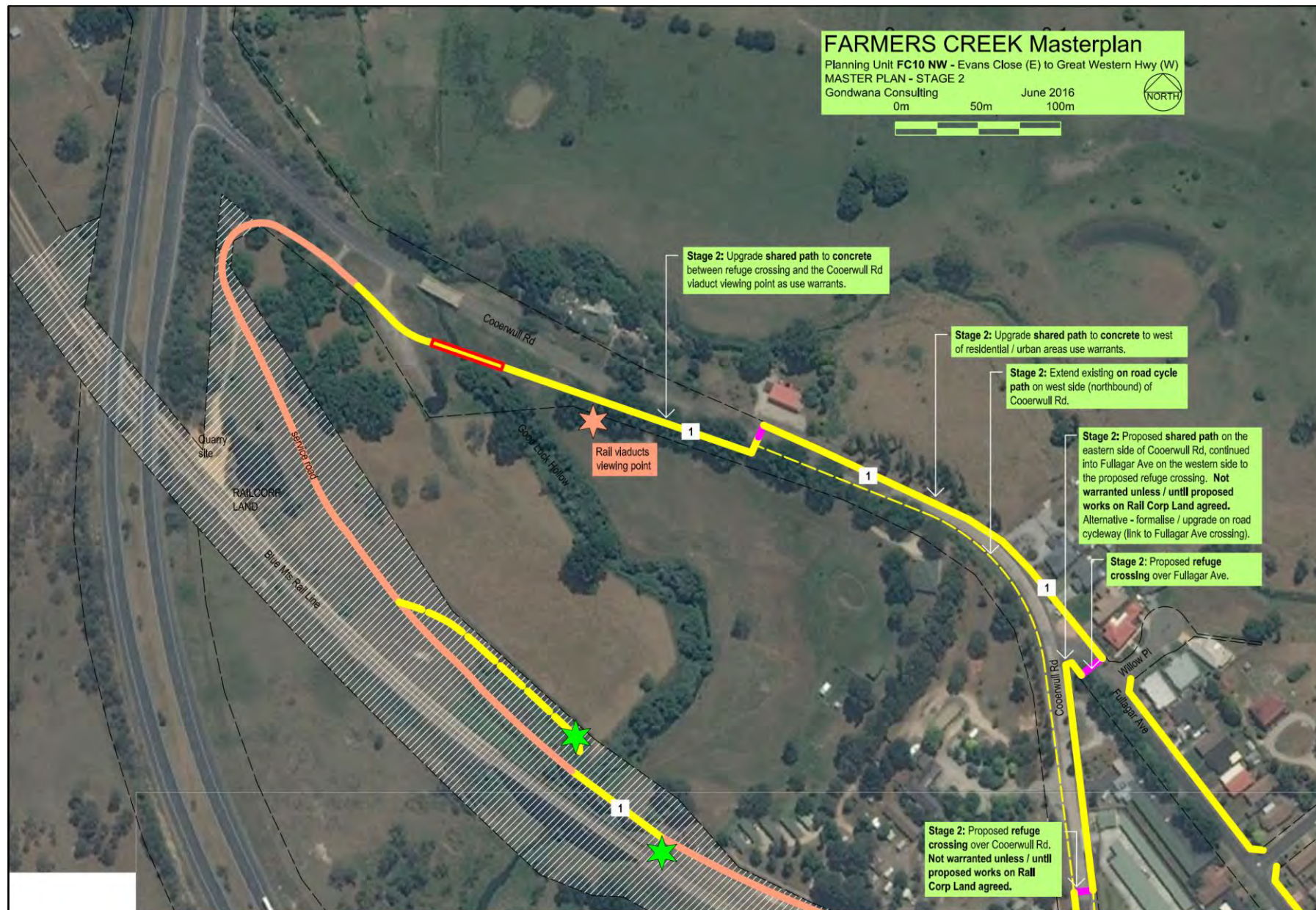


Figure 50 Masterplan FC10-Northwest – Stage 2



Figure 51 Masterplan FC10-Southeast – Stage 2