



**NSW Bureau of Crime
Statistics and Research**

NEW SOUTH WALES RECORDED CRIME STATISTICS

Quarterly Update

March Quarter 2023

This report presents data on crime reported to, or detected by, police and recorded on the NSW Police Force's Computerised Operational Policing System (COPS). Information is provided on 13 major offence categories, which include the most serious personal violence and property offences, plus a more detailed list of 62 specific offence types.

Published by the NSW Bureau of Crime Statistics and Research
June 2023

Phone: + 61 (2) 8688 9800

Email: bcsr@justice.nsw.gov.au

Website: www.bocsar.nsw.gov.au

ISSN: 1035-9044

This report is available in pdf format on our website and may be provided in alternative formats. Please contact us at bcsr@justice.nsw.gov.au.

© State of New South Wales through the NSW Department of Communities and Justice 2023. You may copy, distribute, display, download and otherwise freely deal with this work for any purpose, provided that you attribute the Department of Justice NSW as the owner. However, you must obtain permission if you wish to (a) charge others for access to the work (other than at cost), (b) include the work in advertising or a product for sale, or (c) modify the work.

CONTENTS

SECTION 1:	OVERVIEW OF TRENDS IN RECORDED CRIME	5
Figure 1.1	NSW long-term trend in violent offences	6
Figure 1.2	NSW long-term trend in property offences	6
Table 1.3	Violent and property offences by Statistical Area (SA4) over the five years to March 2023	7
Table 1.4	Recorded criminal incidents for major offences over the five years to March 2023	8
Table 1.5	Recorded criminal incidents for 62 offences over the two years to March 2023	9
Table 1.6	Recorded criminal incidents for 62 offences over the five years to March 2023	10
SECTION 2:	REGIONAL COMPARISONS Statistical Areas	11
Table 2.1	Two year trends and percent change in recorded criminal incidents for major offences by Statistical Area (SA4) over the two years to March 2023	12
Table 2.2	Ratio to NSW rate of recorded criminal incidents per 100,000 population for major offences by Statistical Area (SA4) over the 12 months to March 2023	13
Table 2.3	Number of major offences by Statistical Area (SA4) over the 12 months to March 2023	14
Table 2.4	Number of major offences by Statistical Area (SA4) over the 12 months to March 2022	15
SECTION 3:	LEGAL PROCEEDINGS	16
Table 3.1	Adults proceeded against by the NSW Police Force by method of legal proceeding over the five years to March 2023	17
Table 3.2	Young people proceeded against by the NSW Police Force by method of legal proceeding over the five years to March 2023	17
Table 3.3	Adults proceeded against to court by the NSW Police Force for all 62 criminal offences types over the two years to March 2023	18
Table 3.4	Young people proceeded against to court by the NSW Police Force for all 62 criminal offences over the two years to March 2023	19
Figure 3.5	Offences with the largest change in the number of adults proceeded against to court by the NSW Police Force between the 12 months to March 2022 and the 12 months to March 2023	20
Figure 3.6	Offences with the largest change in the number of young people proceeded against to court by the NSW Police Force between the 12 months to March 2022 and the 12 months to March 2023	20
Table 3.7	Incidents of all 62 criminal offence types by whether legal proceedings commenced within 90 days of reporting over the two years to December 2022	21

Figure 3.8	Percentage of recorded criminal incidents for major offences by whether legal proceedings commenced within 90 days of reporting over the two years to December 2022	22
SECTION 4: POLICING ACTIVITY		23
Table 4.1	Selected policing activities over the five years to March 2023	24
Table 4.2	Non-criminal domestic violence episodes by Statistical Area (SA4) over the five years to March 2023	25
Table 4.3	Ratio to NSW rate of non-criminal domestic violence episodes per 100,000 population by Statistical Area (SA4) over the five years to March 2023	26
APPENDIX 1: REGIONAL COMPARISONS Local Government Areas		27
Appendix Table 1.1	Trends in recorded criminal incidents for major offences, NSW LGAs Over the two years to March 2023	28
Appendix Table 1.2	Ratio to NSW rate of recorded criminal incidents per 100,000 population for major offences, NSW LGAs 12 months to March 2023	31
Appendix Table 1.3	Number of recorded criminal incidents for major offences, NSW LGAs 12 months to March 2023	34
Appendix Table 1.4	Number of recorded criminal incidents for major offences, NSW LGAs 12 months to March 2022	37
APPENDIX 2: EXPLANATORY NOTES		40
Appendix 2.1	Explanatory Notes	41
APPENDIX 3: LGAs IN STATISTICAL AREAS		44
Appendix Table 3.1	Local Government Areas in Greater Sydney Statistical Areas	45
Appendix Table 3.2	Local Government Areas in Regional Statistical Areas	46
Appendix Table 3.3	Greater Sydney Statistical Area Map	47
Appendix Table 3.4	Regional NSW Statistical Areas Map	48
APPENDIX 4: OFFENCE CATEGORIES		49
Appendix 4.1	BOCSAR offences mapped to NSW Police Force incident categories	50

SECTION 1: OVERVIEW OF TRENDS IN RECORDED CRIME

Figure 1.1: NSW long-term trend in violent offences

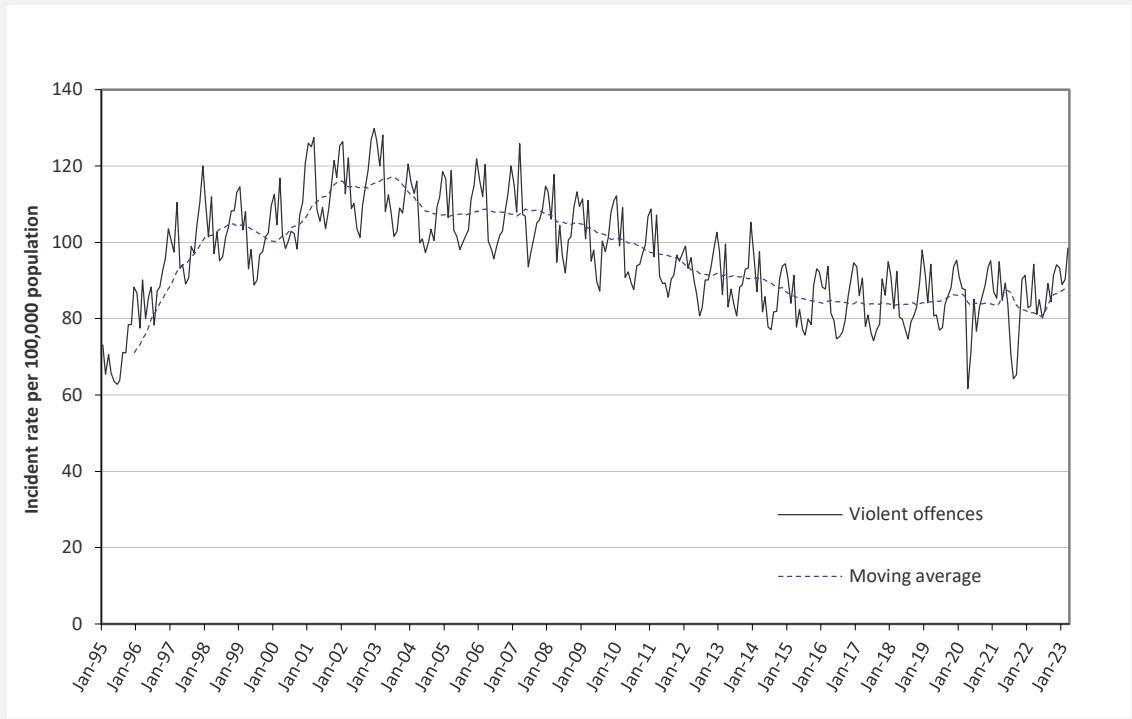
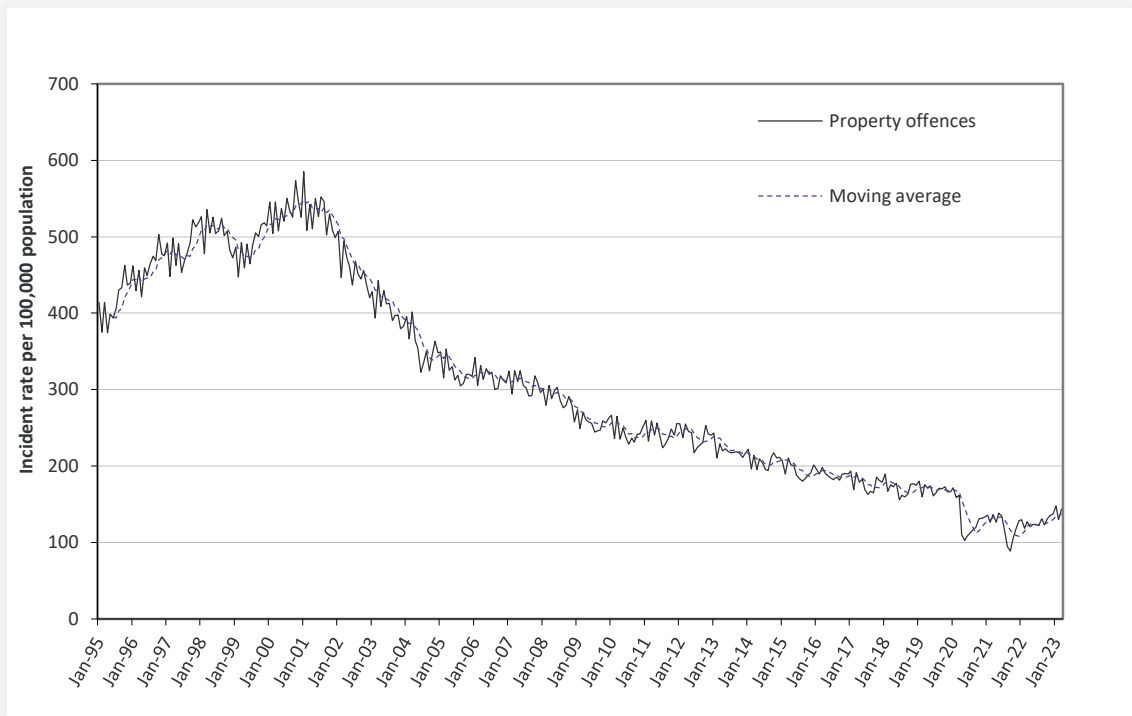


Figure 1.2: NSW long-term trend in property offences



Violent offences include: murder, attempted murder, manslaughter, assault - domestic violence related, assault - non-domestic violence related, assault police, robbery without a weapon, robbery with a firearm, robbery with a weapon not a firearm, sexual assault and sexual touching, sexual act and other sexual offences.

Property offences include: break and enter dwelling, break and enter non-dwelling, motor vehicle theft, steal from motor vehicle, steal from retail store, steal from dwelling, steal from person, stock theft and other theft.

Table 1.3: Violent and property offences by Statistical Area (SA4)

Over the five years to March 2023

Statistical Area	Trend and average annual percentage change			
	Violent Offences		Property Offences	
	2 Year Trend	5 Year Trend	2 Year Trend	5 Year Trend
Greater Sydney	9.3%	Stable	14.4%	-6.9%
Baulkham Hills and Hawkesbury	Stable	5.2%	30.3%	-6.6%
Blacktown	Stable	Stable	Stable	-7.7%
Central Coast	10.1%	Stable	Stable	-8.8%
City and Inner South	21.4%	-1.8%	28.5%	-7.1%
Eastern Suburbs	11.0%	Stable	27.4%	-5.6%
Inner South West	Stable	Stable	Stable	-6.2%
Inner West	Stable	2.8%	15.2%	-4.3%
North Sydney and Hornsby	Stable	Stable	Stable	-9.3%
Northern Beaches	Stable	-7.5%	Stable	-10.5%
Outer South West	Stable	Stable	Stable	-8.2%
Outer West and Blue Mountains	Stable	Stable	Stable	-7.7%
Parramatta	14.4%	Stable	16.9%	-3.6%
Ryde	Stable	-4.5%	17.4%	-7.6%
South West	10.7%	2.1%	18.5%	-5.6%
Sutherland	Stable	Stable	Stable	-11.6%
Regional NSW	4.6%	2.9%	5.7%	-4.9%
Capital Region	9.9%	4.4%	Stable	-7.2%
Central West	Stable	3.0%	Stable	-3.6%
Coffs Harbour - Grafton	11.8%	5.6%	11.0%	-3.9%
Far West and Orana	6.0%	Stable	13.7%	-3.3%
Hunter Valley excluding Newcastle	11.3%	4.1%	Stable	-6.0%
Illawarra	13.7%	Stable	Stable	-4.3%
Mid North Coast	Stable	5.0%	Stable	-5.0%
Murray	5.6%	4.3%	Stable	-4.6%
New England and North West	Stable	3.4%	Stable	Stable
Newcastle and Lake Macquarie	Stable	1.4%	9.7%	-5.5%
Richmond - Tweed	Stable	Stable	Stable	-4.5%
Riverina	4.7%	1.9%	Stable	-5.7%
Southern Highlands and Shoalhaven	Stable	2.5%	Stable	-9.7%
NSW	8.2%	1.4%	10.2%	-6.0%

NSW Recorded Crime Statistics, March Quarter 2023

Table 1.4: Recorded criminal incidents for major offences

Over the five years to March 2023

Offence category	12 months to March 2019	12 months to March 2020	12 months to March 2021	12 months to March 2022	12 months to March 2023	Trend and average annual percentage change	
						2 Year Trend	5 Year Trend
Murder	79	69	67	61	48	Stable	Down 11.7%
Domestic violence related assault	30,244	31,630	32,161	32,329	34,017	Up 5.2%	Up 3.0%
Non-domestic violence related assault	31,618	32,027	29,355	28,060	31,707	Up 13.0%	Stable
Sexual assault	6,002	6,524	7,460	7,202	7,809	Stable	Up 6.8%
Sexual touching, sexual act and other sexual offences	8,147	8,031	8,097	7,185	7,465	Stable	Stable
Robbery	2,540	2,470	1,971	1,712	1,883	Stable	Down 7.2%
Break and enter dwelling	26,081	25,295	18,465	17,446	18,938	Up 8.6%	Down 7.7%
Break and enter non-dwelling	10,103	9,955	6,739	7,252	7,534	Stable	Down 7.1%
Motor vehicle theft	13,273	13,383	11,221	10,586	12,836	Up 21.3%	Stable
Steal from motor vehicle	37,680	37,684	26,733	27,465	27,387	Stable	Down 7.7%
Steal from retail store	25,401	26,580	18,974	17,588	24,207	Up 37.6%	Down 1.2%
Other stealing offences	50,335	49,789	36,537	34,948	36,124	Stable	Down 8.0%
Malicious damage to property	58,152	56,176	52,719	48,395	48,889	Stable	Down 4.2%

NSW Recorded Crime Statistics, March Quarter 2023

Table 1.5: Recorded criminal incidents for 62 offences

Over the two years to March 2023

Offence category		Number of recorded criminal incidents		2 Year Trend	
		12 months to March 2022	12 months to March 2023	Trend test result	Annual average percentage change
Homicide	Murder	61	48	Stable	
	Attempted murder	17	7	n.c.	
	Murder accessory, conspiracy	1	1	n.c.	
	Manslaughter	3	11	n.c.	
Assault	Domestic violence related assault	32,329	34,017	Up	5.2%
	Non-domestic violence related assault	28,060	31,707	Up	13.0%
	Assault Police	2,649	2,730	Stable	
Sexual offences	Sexual assault	7,202	7,809	Stable	
	Sexual touching, sexual act and other sexual offences	7,185	7,465	Stable	
Abduction and kidnapping		199	201	Stable	
Robbery	Robbery without a weapon	891	1,027	Stable	
	Robbery with a firearm	91	107	Stable	
	Robbery with a weapon not a firearm	730	749	Stable	
Blackmail and extortion		124	1,298	Up	946.8%
Intimidation, stalking and harassment		41,276	44,017	Up	6.6%
Other offences against the person		1,813	1,453	Stable	
Theft	Break and enter dwelling	17,446	18,938	Up	8.6%
	Break and enter non-dwelling	7,252	7,534	Stable	
	Receiving or handling stolen goods	7,497	7,923	Stable	
	Motor vehicle theft	10,586	12,836	Up	21.3%
	Steal from motor vehicle	27,465	27,387	Stable	
	Steal from retail store	17,588	24,207	Up	37.6%
	Steal from dwelling	16,049	15,213	Stable	
	Steal from person	1,693	2,054	Up	21.3%
	Stock theft	300	266	Stable	
	Fraud	44,845	47,505	Stable	
Other theft	16,906	18,591	Stable		
Arson		3,628	3,506	Stable	
Malicious damage to property		48,395	48,889	Stable	
Drug offences	Possession and/or use of cocaine	2,294	2,630	Stable	
	Possession and/or use of narcotics	1,241	1,168	Stable	
	Possession and/or use of cannabis	16,123	15,477	Down	-4.0%
	Possession and/or use of amphetamines	7,020	6,384	Down	-9.1%
	Possession and/or use of ecstasy	617	1,084	Up	75.7%
	Possession and/or use of other drugs	6,309	6,228	Stable	
	Dealing, trafficking in cocaine	1,049	1,288	Stable	
	Dealing, trafficking in narcotics	492	290	Stable	
	Dealing, trafficking in cannabis	787	537	Down	-31.8%
	Dealing, trafficking in amphetamines	3,036	1,693	Down	-44.2%
	Dealing, trafficking in ecstasy	160	187	Stable	
	Dealing, trafficking in other drugs	490	396	Stable	
	Cultivating cannabis	1,036	718	Stable	
Manufacture drug	50	58	Stable		
Importing drugs	191	150	Stable		
Other drug offences	5,665	5,617	Stable		
Prohibited and regulated weapons offences		14,177	13,430	Stable	
Disorderly conduct	Trespass	9,267	11,027	Up	19.0%
	Offensive conduct	3,626	3,541	Stable	
	Offensive language	1,795	1,524	Down	-15.1%
	Criminal intent	2,437	2,683	Up	10.1%
Betting and gaming offences		n.a.	n.a.		
Liquor offences		9,086	9,755	Stable	
Pornography offences		903	994	Stable	
Prostitution offences		19	21	n.c.	
Against justice procedures	Escape custody	158	155	Stable	
	Breach Apprehended Violence Order	21,693	22,994	Up	6.0%
	Breach bail conditions	51,457	53,101	Stable	
	Fail to appear	891	866	Stable	
	Resist or hinder officer	5,703	5,535	Stable	
Other offences against justice procedures	2,014	2,516	Stable		
Transport regulatory offences		70,063	68,234	Stable	
Other offences		91,081	15,999	Down	-82.4%

Note: The increase in blackmail and extortion offence numbers in the most recent reporting period is due to a change in how NSW Police record 'sextortion' incidents. From mid-2022, sextortion offences are recorded as extortion. Previously they were recorded as fraud. As such, the series prior to mid-2022 is not comparable to the series after this time for this offence.

NSW Recorded Crime Statistics, March Quarter 2023

Table 1.6: Recorded criminal incidents for 62 offences

Over the five years to March 2023

Offence category		Number of recorded criminal incidents		5 Year Trend	
		12 months to March 2019	12 months to March 2023	Trend test result	Annual average percentage change
Homicide	Murder	79	48	Down	-11.7%
	Attempted murder	20	7	n.c.	
	Murder accessory, conspiracy	2	1	n.c.	
	Manslaughter	14	11	n.c.	
Assault	Domestic violence related assault	30,244	34,017	Up	3.0%
	Non-domestic violence related assault	31,618	31,707	Stable	
	Assault Police	2,458	2,730	Up	2.7%
Sexual offences	Sexual assault	6,002	7,809	Up	6.8%
	Sexual touching, sexual act and other sexual offences	8,147	7,465	Stable	
Abduction and kidnapping		208	201	Stable	
Robbery	Robbery without a weapon	1,514	1,027	Down	-9.2%
	Robbery with a firearm	171	107	Down	-11.1%
	Robbery with a weapon not a firearm	855	749	Down	-3.3%
Blackmail and extortion		112	1,298	Up	84.5%
Intimidation, stalking and harassment		32,740	44,017	Up	7.7%
Other offences against the person		1,119	1,453	Up	6.7%
Theft	Break and enter dwelling	26,081	18,938	Down	-7.7%
	Break and enter non-dwelling	10,103	7,534	Down	-7.1%
	Receiving or handling stolen goods	8,142	7,923	Stable	
	Motor vehicle theft	13,273	12,836	Stable	
	Steal from motor vehicle	37,680	27,387	Down	-7.7%
	Steal from retail store	25,401	24,207	Down	-1.2%
	Steal from dwelling	18,955	15,213	Down	-5.3%
	Steal from person	3,988	2,054	Down	-15.3%
	Stock theft	453	266	Down	-12.5%
	Fraud	52,196	47,505	Down	-2.3%
Other theft		26,939	18,591	Down	-8.9%
		5,125	3,506	Down	-9.1%
Arson		58,152	48,889	Down	-4.2%
Malicious damage to property		2,302	2,630	Stable	
Drug offences	Possession and/or use of cocaine	1,041	1,168	Stable	
	Possession and/or use of narcotics	17,219	15,477	Down	-2.6%
	Possession and/or use of cannabis	7,298	6,384	Down	-3.3%
	Possession and/or use of amphetamines	2,841	1,084	Down	-21.4%
	Possession and/or use of other drugs	5,263	6,228	Up	4.3%
	Dealing, trafficking in cocaine	830	1,288	Up	11.6%
	Dealing, trafficking in narcotics	680	290	Stable	
	Dealing, trafficking in cannabis	1,139	537	Down	-17.1%
	Dealing, trafficking in amphetamines	1,878	1,693	Stable	
	Dealing, trafficking in ecstasy	598	187	Down	-25.2%
	Dealing, trafficking in other drugs	545	396	Down	-7.7%
	Cultivating cannabis	1,256	718	Down	-13.0%
	Manufacture drug	63	58	Stable	
	Importing drugs	70	150	Stable	
	Other drug offences	5,992	5,617	Down	-1.6%
Prohibited and regulated weapons offences		14,704	13,430	Down	-2.2%
Disorderly conduct	Trespass	10,031	11,027	Stable	
	Offensive conduct	4,698	3,541	Down	-6.8%
	Offensive language	2,639	1,524	Down	-12.8%
	Criminal intent	2,321	2,683	Up	3.7%
Betting and gaming offences		n.a.	n.a.		
Liquor offences		11,494	9,755	Down	-4.0%
Pornography offences		663	994	Up	10.7%
Prostitution offences		24	21	n.c.	
Against justice procedures	Escape custody	174	155	Stable	
	Breach Apprehended Violence Order	16,471	22,994	Up	8.7%
	Breach bail conditions	43,075	53,101	Up	5.4%
	Fail to appear	509	866	Up	14.2%
	Resist or hinder officer	6,082	5,535	Stable	
	Other offences against justice procedures	835	2,516	Up	31.8%
Transport regulatory offences		112,814	68,234	Down	-11.8%
Other offences		14,728	15,999	Up	2.1%

Note: The increase in blackmail and extortion offence numbers in the most recent reporting period is due to a change in how NSW Police record 'sextortion' incidents. From mid-2022, sextortion offences are recorded as extortion. Previously they were recorded as fraud. As such, the series prior to mid-2022 is not comparable to the series after this time for this offence.

SECTION 2: REGIONAL COMPARISONS

Statistical Areas

NSW Recorded Crime Statistics, March Quarter 2023

Table 2.1: Two year trends and percent change in recorded criminal incidents for major offences by Statistical Area (SA4)

Over the two years to March 2023

Statistical Area	Murder	Domestic violence related assault	Non-domestic violence related assault	Sexual assault	Sexual touching, sexual act and other sexual offences	Robbery	Break and enter dwelling	Break and enter non-dwelling	Motor vehicle theft	Steal from motor vehicle	Steal from retail store	Other stealing offences	Malicious damage to property
Greater Sydney	ns	3.7	16.7	ns	ns	ns	ns	ns	21.0	ns	45.3	ns	ns
Baulkham Hills and Hawkesbury	ns	ns	ns	ns	ns	ns	ns	74.3	ns	ns	52.7	ns	ns
Blacktown	ns	ns	ns	ns	ns	ns	ns	ns	ns	ns	38.1	ns	ns
Central Coast	ns	13.0	ns	ns	ns	ns	ns	ns	13.8	ns	27.2	ns	ns
City and Inner South	ns	10.5	27.9	26.8	31.4	30.1	24.2	15.2	34.7	ns	46.9	23.6	13.1
Eastern Suburbs	ns	5.3	12.3	ns	33.1	ns	ns	24.6	ns	ns	88.8	ns	ns
Inner South West	ns	ns	20.0	ns	ns	ns	ns	ns	25.3	ns	61.4	ns	ns
Inner West	ns	ns	ns	ns	ns	ns	32.0	ns	39.8	ns	ns	13.5	ns
North Sydney and Hornsby	ns	ns	22.5	ns	ns	ns	ns	ns	ns	ns	ns	ns	ns
Northern Beaches	ns	ns	ns	ns	ns	ns	ns	ns	ns	-30.4	ns	ns	ns
Outer South West	ns	ns	ns	ns	ns	ns	ns	ns	ns	-19.9	64.3	ns	ns
Outer West and Blue Mountains	ns	ns	ns	ns	ns	ns	ns	ns	16.6	ns	27.4	ns	ns
Parramatta	ns	ns	19.6	ns	ns	ns	ns	ns	21.6	ns	67.7	11.7	ns
Ryde	ns	-17.2	ns	ns	ns	ns	42.0	ns	71.8	ns	ns	ns	ns
South West	ns	ns	28.0	ns	ns	ns	ns	ns	17.4	ns	67.5	ns	ns
Sutherland	ns	ns	ns	ns	30.1	27.3	ns	ns	ns	ns	37.7	ns	ns
Regional NSW	ns	7.0	7.2	ns	ns	ns	6.7	ns	21.5	ns	25.2	ns	ns
Capital Region	ns	8.0	18.9	ns	ns	ns	ns	ns	ns	ns	43.5	ns	ns
Central West	ns	ns	ns	ns	ns	ns	ns	ns	16.3	ns	ns	ns	ns
Coffs Harbour - Grafton	ns	23.1	ns	ns	ns	ns	9.4	ns	ns	16.3	48.8	ns	ns
Far West and Orana	ns	7.1	ns	ns	ns	ns	ns	25.0	38.5	19.5	32.2	ns	ns
Hunter Valley excluding Newcastle	ns	14.1	21.6	ns	ns	51.2	ns	ns	31.0	ns	ns	ns	7.2
Illawarra	ns	ns	14.3	35.9	ns	ns	ns	ns	ns	ns	31.8	ns	ns
Mid North Coast	ns	7.9	8.3	ns	ns	ns	ns	ns	ns	ns	30.3	-13.3	ns
Murray	ns	4.8	11.6	ns	ns	ns	14.5	42.7	ns	ns	ns	ns	ns
New England and North West	ns	ns	6.7	ns	ns	ns	ns	ns	26.8	ns	20.3	ns	ns
Newcastle and Lake Macquarie	ns	ns	ns	ns	ns	ns	25.2	-15.8	29.9	15.9	ns	ns	ns
Richmond - Tweed	ns	ns	ns	ns	ns	ns	ns	19.9	ns	ns	ns	ns	-13.9
Riverina	ns	12.3	5.9	ns	ns	ns	ns	ns	ns	ns	66.4	ns	ns
Southern Highlands and Shoalhaven	ns	ns	ns	ns	ns	ns	ns	ns	ns	ns	ns	ns	20.4
NSW	ns	5.2	13.0	ns	ns	ns	8.6	ns	21.3	ns	37.6	ns	ns

NSW Recorded Crime Statistics, March Quarter 2023

Table 2.2: Ratio to NSW rate of recorded criminal incidents per 100,000 population for major offences by Statistical Area (SA4)
Over the 12 months to March 2023

Statistical Area	Murder	Domestic violence related assault	Non-domestic violence related assault	Sexual assault	Sexual touching, sexual act and other sexual offences	Robbery	Break and enter dwelling	Break and enter non-dwelling	Motor vehicle theft	Steal from motor vehicle	Steal from retail store	Other stealing offences	Malicious damage to property
Greater Sydney	0.9	0.8	0.8	0.7	0.8	1.0	0.7	0.6	0.7	0.8	1.0	0.9	0.8
Baulkham Hills and Hawkesbury	0.6	0.4	0.3	0.5	0.6	0.3	0.4	0.5	0.4	0.4	0.4	0.5	0.5
Blacktown	0.4	1.2	1.0	0.9	1.0	1.8	0.9	0.7	1.1	1.2	1.2	1.0	1.1
Central Coast	1.9	1.2	1.1	1.2	1.2	0.9	0.7	0.8	0.8	0.9	1.0	0.8	1.1
City and Inner South	0.5	1.1	2.4	1.4	1.7	2.4	0.9	1.3	0.8	0.9	3.2	3.1	1.4
Eastern Suburbs	0.6	0.6	0.9	0.8	0.9	0.6	0.6	0.3	0.7	0.6	1.5	1.0	0.7
Inner South West	1.7	0.9	0.6	0.5	0.6	0.8	0.6	0.4	0.7	0.7	0.6	0.6	0.6
Inner West	0.6	0.5	0.6	0.6	0.6	0.7	0.8	0.7	0.7	0.8	0.8	1.0	0.6
North Sydney and Hornsby	0.4	0.3	0.4	0.4	0.5	0.4	0.5	0.4	0.3	0.5	0.8	0.5	0.4
Northern Beaches		0.2	0.5	0.5	0.5	0.4	0.3	0.3	0.4	0.4	0.7	0.5	0.5
Outer South West	0.6	1.0	0.8	0.9	0.9	0.9	0.5	0.5	0.7	0.7	1.1	0.6	0.8
Outer West and Blue Mountains	1.0	1.1	1.1	1.1	1.1	1.1	0.9	0.8	0.9	1.1	1.1	0.9	1.2
Parramatta	1.7	0.9	0.9	0.8	0.9	1.3	1.1	0.8	1.1	1.1	1.0	1.0	0.7
Ryde		0.3	0.4	0.4	0.5	0.4	0.7	0.4	0.4	0.5	0.5	0.6	0.4
South West	1.1	1.0	0.8	0.6	0.8	1.1	0.7	0.5	0.8	0.9	0.8	0.8	0.7
Sutherland		0.7	0.5	0.6	0.6	0.5	0.3	0.2	0.3	0.4	0.5	0.4	0.6
Regional NSW	1.2	1.3	1.2	1.3	1.2	1.0	1.6	1.8	1.5	1.4	1.0	1.2	1.4
Capital Region		1.0	0.9	0.9	1.1	0.4	0.7	1.3	0.8	0.7	0.7	0.9	1.0
Central West	1.6	1.7	1.4	1.4	1.5	1.1	1.9	1.8	1.5	1.4	0.9	1.3	1.6
Coffs Harbour - Grafton		1.6	1.5	1.3	1.3	1.5	1.4	1.9	1.6	1.5	1.0	1.4	1.5
Far West and Orana	1.4	3.5	2.3	1.7	2.0	1.5	3.9	5.8	3.1	2.7	1.5	2.0	2.9
Hunter Valley excluding Newcastle	0.6	1.3	1.2	1.5	1.2	0.9	1.1	1.6	1.6	1.3	0.9	1.3	1.4
Illawarra	1.6	0.8	0.9	1.0	0.9	0.8	0.9	0.8	0.9	1.3	1.3	0.9	1.0
Mid North Coast	2.2	1.5	1.2	1.2	1.4	1.0	1.8	1.9	1.5	1.1	0.9	1.5	1.5
Murray	1.4	1.4	1.4	1.2	1.2	0.7	1.5	2.6	1.4	1.9	0.7	1.3	1.6
New England and North West	0.9	2.0	1.7	1.8	1.4	1.5	3.3	2.2	2.3	1.7	1.2	1.5	2.2
Newcastle and Lake Macquarie	0.9	1.0	1.1	1.3	1.0	1.4	1.6	1.4	1.8	1.9	1.2	1.2	1.3
Richmond - Tweed	3.3	1.0	1.1	1.1	1.1	1.1	1.2	1.7	1.6	1.1	0.6	1.1	1.1
Riverina	1.0	1.6	1.3	1.5	1.3	0.9	2.1	2.1	1.5	1.5	1.2	1.2	1.6
Southern Highlands and Shoalhaven	1.0	0.9	0.9	1.2	1.2	0.5	0.7	1.1	0.7	0.6	0.7	0.7	1.2
NSW	1.0	1.0	1.0	1.0	1.0	1.0	1.0	1.0	1.0	1.0	1.0	1.0	1.0

NSW Recorded Crime Statistics, March Quarter 2023

Table 2.3: Number of major offences by Statistical Area (SA4)

Over the 12 months to March 2023

Statistical Area	Murder	Domestic violence related assault	Non-domestic violence related assault	Sexual assault	Sexual touching, sexual act and other sexual offences	Robbery	Break and enter dwelling	Break and enter non-dwelling	Motor vehicle theft	Steal from motor vehicle	Steal from retail store	Other stealing offences	Malicious damage to property
Greater Sydney	27	18,024	16,978	3,728	4,109	1,193	8,565	2,845	5,961	13,944	15,830	20,837	24,216
Baulkham Hills and Hawkesbury	1	492	335	124	141	18	243	122	174	330	345	574	760
Blacktown	1	2,098	1,586	333	381	169	893	249	693	1,604	1,491	1,791	2,596
Central Coast	4	1,723	1,533	395	390	74	573	244	445	1,100	1,004	1,184	2,302
City and Inner South	1	1,602	3,120	449	532	190	693	395	439	1,058	3,194	4,567	2,816
Eastern Suburbs	1	718	980	197	229	36	396	81	306	572	1,150	1,224	1,060
Inner South West	6	2,184	1,487	284	328	116	785	235	689	1,387	1,104	1,553	2,247
Inner West	1	666	741	173	177	50	606	188	316	820	731	1,305	1,130
North Sydney and Hornsby	1	540	587	184	214	40	520	142	209	657	992	999	1,015
Northern Beaches	0	261	468	133	132	26	216	83	166	384	570	641	802
Outer South West	1	1,310	909	257	254	65	384	131	346	742	958	785	1,531
Outer West and Blue Mountains	2	1,551	1,399	344	334	85	733	237	478	1,199	1,068	1,325	2,367
Parramatta	5	1,956	1,682	362	403	148	1,236	386	829	1,923	1,457	2,317	2,141
Ryde	0	294	299	77	91	21	328	71	134	360	305	533	492
South West	3	1,992	1,414	273	369	127	777	228	614	1,525	1,092	1,608	2,106
Sutherland	0	637	438	143	134	28	182	53	123	283	369	431	851
Regional NSW	21	15,990	13,595	3,528	3,194	685	10,373	4,689	6,874	13,441	8,377	15,280	24,608
Capital Region	0	953	860	213	233	24	380	280	306	581	511	966	1,456
Central West	2	1,505	1,134	289	303	57	949	350	507	993	572	1,232	2,115
Coffs Harbour - Grafton	0	981	839	189	178	52	489	253	377	733	421	935	1,291
Far West and Orana	1	1,737	1,061	194	214	42	1,075	636	568	1,062	526	1,068	2,061
Hunter Valley excluding Newcastle	1	1,644	1,362	412	323	62	754	444	752	1,295	832	1,701	2,516
Illawarra	3	1,004	1,058	318	272	60	655	241	472	1,394	1,230	1,210	1,867
Mid North Coast	3	1,469	1,097	268	297	54	978	405	557	833	623	1,528	2,029
Murray	1	736	654	143	142	19	427	304	278	792	274	731	1,204
New England and North West	1	1,560	1,250	316	244	67	1,453	378	682	1,075	688	1,210	2,494
Newcastle and Lake Macquarie	2	1,643	1,761	485	374	130	1,428	500	1,146	2,555	1,357	2,050	3,065
Richmond - Tweed	5	1,048	1,143	282	251	66	718	416	647	965	428	1,264	1,725
Riverina	1	1,115	822	236	190	33	788	319	399	847	599	884	1,610
Southern Highlands and Shoalhaven	1	595	554	183	173	19	279	163	183	316	316	501	1,175
NSW	48	34,017	31,707	7,809	7,465	1,883	18,938	7,534	12,836	27,387	24,207	36,124	48,889

NSW Recorded Crime Statistics, March Quarter 2023

Table 2.4: Number of major offences by Statistical Area (SA4)

Over the 12 months to March 2022

Statistical Area	Murder	Domestic violence related assault	Non-domestic violence related assault	Sexual assault	Sexual touching, sexual act and other sexual offences	Robbery	Break and enter dwelling	Break and enter non-dwelling	Motor vehicle theft	Steal from motor vehicle	Steal from retail store	Other stealing offences	Malicious damage to property
Greater Sydney	35	17,373	14,552	3,483	3,748	1,067	7,728	2,596	4,928	14,276	10,896	18,996	23,515
Baulkham Hills and Hawkesbury	1	464	323	128	106	14	237	70	113	287	226	439	587
Blacktown	5	2,009	1,493	323	365	172	786	212	582	1,534	1,080	1,685	2,687
Central Coast	5	1,525	1,375	390	352	65	575	243	391	1,144	789	1,078	2,356
City and Inner South	9	1,450	2,440	354	405	146	558	343	326	958	2,175	3,694	2,489
Eastern Suburbs	0	682	873	175	172	31	337	65	244	596	609	1,076	1,084
Inner South West	2	2,125	1,239	289	309	105	736	230	550	1,506	684	1,532	2,039
Inner West	2	637	612	150	170	49	459	173	226	820	614	1,150	1,084
North Sydney and Hornsby	0	565	479	196	200	31	457	142	194	681	804	968	1,084
Northern Beaches	1	290	465	136	151	28	217	89	162	552	455	675	809
Outer South West	3	1,315	789	259	309	65	388	152	325	926	583	908	1,614
Outer West and Blue Mountains	0	1,491	1,261	343	374	80	692	254	410	1,183	838	1,192	2,176
Parramatta	6	1,787	1,406	325	315	140	1,147	271	682	1,925	869	2,074	2,112
Ryde	0	355	268	73	92	15	231	99	78	308	250	509	497
South West	1	1,990	1,105	244	325	104	682	192	523	1,402	652	1,482	2,048
Sutherland	0	688	424	98	103	22	226	61	122	454	268	534	849
Regional NSW	25	14,950	12,677	3,635	3,389	644	9,718	4,655	5,658	13,187	6,692	15,946	24,802
Capital Region	1	882	723	235	213	39	422	248	291	633	356	975	1,507
Central West	3	1,416	1,157	334	344	51	918	395	436	1,041	484	1,285	2,244
Coffs Harbour - Grafton	0	797	769	212	192	38	447	311	332	630	283	887	1,260
Far West and Orana	2	1,622	950	227	234	44	1,031	509	410	889	398	1,102	1,988
Hunter Valley excluding Newcastle	1	1,441	1,120	422	384	41	696	432	574	1,225	606	1,856	2,348
Illawarra	1	891	926	234	243	63	670	296	448	1,496	933	1,224	1,811
Mid North Coast	2	1,361	1,013	322	324	38	1,022	498	456	851	478	1,762	2,150
Murray	2	702	586	149	140	25	373	213	279	769	298	751	1,237
New England and North West	1	1,569	1,171	326	287	46	1,424	418	538	1,312	572	1,217	2,473
Newcastle and Lake Macquarie	7	1,618	1,786	462	356	133	1,141	594	882	2,205	1,301	2,111	3,209
Richmond - Tweed	1	1,088	1,149	273	248	57	671	347	554	1,137	353	1,329	2,004
Riverina	0	993	776	241	233	33	617	275	312	652	360	906	1,595
Southern Highlands and Shoalhaven	4	570	551	198	191	36	286	119	146	347	270	541	976
NSW	61	32,329	28,060	7,202	7,185	1,712	17,446	7,252	10,586	27,465	17,588	34,948	48,395

SECTION 3: LEGAL PROCEEDINGS

Table 3.1: Adults proceeded against by the NSW Police Force by method of legal proceeding

Over the five years to March 2023

Method of legal proceeding	Adults proceeded against					2 Year Trend		5 Year Trend	
	12 months to March 2019	12 months to March 2020	12 months to March 2021	12 months to March 2022	12 months to March 2023	Number change	Percentage change	Number change	Average annual percentage change
Proceeded against to court (offence)	148,908	147,256	144,155	144,820	158,024	13,204	9.1%	9,116	1.5%
Proceeded against to court (breach of bail)	6,076	7,254	7,841	7,590	7,898	308	4.1%	1,822	6.8%
Court diversion	13,420	13,030	9,440	8,437	9,789	1,352	16.0%	-3,631	-7.6%
Criminal Infringement Notice	8,751	8,591	5,912	5,557	6,842	1,285	23.1%	-1,909	-6.0%
Cannabis or other drug caution	4,669	4,439	3,528	2,880	2,947	67	Stable	-1,722	-10.9%

Table 3.2: Young people proceeded against by the NSW Police Force by method of legal proceeding

Over the five years to March 2023

Method of legal proceeding	Young people proceeded against					2 Year Trend		5 Year Trend	
	12 months to March 2019	12 months to March 2020	12 months to March 2021	12 months to March 2022	12 months to March 2023	Number change	Percentage change	Number change	Average annual percentage change
Proceeded against to court (offence)	10,000	9,945	9,533	9,339	10,563	1,224	13.1%	563	Stable
Proceeded against to court (breach of bail)	1,636	1,626	1,478	1,387	1,535	148	Stable	-101	Stable
Court diversion	9,904	10,893	10,504	11,494	10,997	-497	Stable	1,093	2.7%
Youth Justice Conference	709	847	807	717	804	87	Stable	95	Stable
Caution Young Offenders Act	6,725	7,304	6,738	6,397	7,181	784	Stable	456	Stable
Warning Young Offenders Act	2,470	2,742	2,959	4,380	3,012	-1,368	Stable	542	5.1%

Table 3.3: Adults proceeded against to court by the NSW Police Force for all 62 criminal offences types

Over the two years to March 2023

Offence category		12 months to March 2022		12 months to March 2023		2 Year Trend	
		No. proceeded to court	% proceeded to court	No. proceeded to court	% proceeded to court	Trend test result	Percentage change
Homicide	Murder	77	100.0%	85	100.0%	Stable	
	Attempted murder	17	100.0%	6	100.0%	n.c.	
	Murder accessory, conspiracy	0		1	100.0%	n.c.	
	Manslaughter	5	100.0%	11	100.0%	n.c.	
Assault	Domestic violence related assault	13,519	99.9%	14,536	99.8%	Up	7.5%
	Non-domestic violence related assault	6,429	97.1%	7,262	96.6%	Up	13.0%
	Assault Police	1,422	99.9%	1,520	99.8%	Stable	
Sexual offences	Sexual assault	797	100.0%	824	100.0%	Stable	
	Sexual touching, sexual act and other sexual offences	1,306	98.6%	1,409	97.4%	Up	7.9%
Abduction and kidnapping		206	100.0%	198	100.0%	Stable	
Robbery	Robbery without a weapon	323	100.0%	373	100.0%	Stable	
	Robbery with a firearm	77	100.0%	71	100.0%	Stable	
	Robbery with a weapon not a firearm	357	100.0%	309	100.0%	Stable	
Blackmail and extortion		20	100.0%	23	100.0%	Stable	
Intimidation, stalking and harassment		13,391	99.0%	14,950	99.1%	Up	11.6%
Other offences against the person		329	98.5%	271	95.8%	Stable	
Theft	Break and enter dwelling	2,183	99.6%	2,480	99.8%	Stable	
	Break and enter non-dwelling	1,080	99.4%	1,343	99.2%	Up	24.4%
	Receiving or handling stolen goods	3,820	97.1%	4,178	97.9%	Up	9.4%
	Motor vehicle theft	1,220	99.7%	1,505	99.9%	Up	23.4%
	Steal from motor vehicle	877	99.1%	953	99.0%	Stable	
	Steal from retail store	4,182	66.7%	6,640	69.7%	Up	58.8%
	Steal from dwelling	747	95.5%	804	94.8%	Stable	
	Steal from person	158	96.3%	246	98.4%	Up	55.7%
	Stock theft	13	100.0%	4	100.0%	n.c.	
	Fraud	3,703	98.5%	4,101	98.5%	Stable	
Other theft	1,411	88.6%	1,613	90.3%	Stable		
Arson		170	92.4%	148	88.6%	Stable	
Malicious damage to property		4,355	99.3%	4,403	99.4%	Stable	
Drug offences	Possession and/or use of cocaine	1,299	98.4%	1,579	94.8%	Stable	
	Possession and/or use of narcotics	508	100.0%	548	99.5%	Stable	
	Possession and/or use of cannabis	4,982	63.5%	4,817	62.1%	Down	-3.3%
	Possession and/or use of amphetamines	2,934	99.6%	2,715	99.1%	Down	-7.5%
	Possession and/or use of ecstasy	232	77.1%	425	54.6%	Up	83.2%
	Possession and/or use of other drugs	1,535	98.8%	1,562	93.4%	Stable	
	Dealing, trafficking in cocaine	690	100.0%	859	100.0%	Stable	
	Dealing, trafficking in narcotics	144	100.0%	130	100.0%	Stable	
	Dealing, trafficking in cannabis	404	99.8%	369	100.0%	Stable	
	Dealing, trafficking in amphetamines	806	100.0%	692	100.0%	Down	-14.1%
	Dealing, trafficking in ecstasy	77	100.0%	96	100.0%	Stable	
	Dealing, trafficking in other drugs	209	100.0%	225	100.0%	Stable	
	Cultivating cannabis	614	99.7%	459	100.0%	Stable	
Manufacture drug	42	100.0%	49	100.0%	Stable		
Importing drugs	108	98.2%	101	100.0%	Stable		
Other drug offences	648	98.5%	649	96.6%	Stable		
Prohibited and regulated weapons offences		2,938	85.4%	2,862	87.4%	Stable	
Disorderly conduct	Trespass	972	62.1%	1,304	67.6%	Up	34.2%
	Offensive conduct	294	15.3%	287	14.4%	Stable	
	Offensive language	118	12.8%	99	13.4%	Stable	
	Criminal intent	1,437	99.7%	1,589	99.6%	Up	10.6%
Betting and gaming offences		6	54.5%	17	77.3%	n.c.	
Liquor offences		93	4.8%	151	5.8%	Up	62.4%
Pornography offences		217	100.0%	233	100.0%	Stable	
Prostitution offences		0		1	100.0%	n.c.	
Against justice procedures	Escape custody	69	100.0%	72	100.0%	Stable	
	Breach Apprehended Violence Order	11,497	100.0%	12,446	100.0%	Up	8.3%
	Breach bail conditions	7,590	100.0%	7,898	100.0%	Up	4.1%
	Fail to appear	13	100.0%	12	100.0%	n.c.	
	Resist or hinder officer	1,682	85.3%	1,529	83.2%	Stable	
Other offences against justice procedures		987	100.0%	1,146	100.0%	Stable	
Transport regulatory offences		565	1.3%	309	0.9%	Down	-45.3%
Other offences		4,394	7.7%	1,994	31.1%	Down	-54.6%

NSW Recorded Crime Statistics, March Quarter 2023

Table 3.4: Young people proceeded against to court by the NSW Police Force for all 62 criminal offences

Over the two years to March 2023

Offence category		12 months to March 2022		12 months to March 2023		2 Year Trend	
		No. proceeded to court	% proceeded to court	No. proceeded to court	% proceeded to court	Trend test result	Percentage change
Homicide	Murder	7	100.0%	11	100.0%	n.c.	
	Attempted murder	1	100.0%	0		n.c.	
	Murder accessory, conspiracy	0		0		n.c.	
	Manslaughter	0		0		n.c.	
Assault	Domestic violence related assault	451	43.1%	444	37.7%	Stable	
	Non-domestic violence related assault	848	39.1%	797	31.8%	Stable	
	Assault Police	110	77.5%	139	74.7%	Stable	
Sexual offences	Sexual assault	150	98.7%	108	100.0%	Down	-28.0%
	Sexual touching, sexual act and other sexual offences	91	81.3%	84	75.0%	Stable	
Abduction and kidnapping		5	100.0%	4	100.0%	n.c.	
Robbery	Robbery without a weapon	277	93.9%	311	92.8%	Stable	
	Robbery with a firearm	6	100.0%	27	93.1%	n.c.	
	Robbery with a weapon not a firearm	194	92.4%	173	97.2%	Stable	
Blackmail and extortion		1	100.0%	2	100.0%	n.c.	
Intimidation, stalking and harassment		1,105	70.5%	1,303	72.6%	Up	17.9%
Other offences against the person		20	76.9%	25	56.8%	Stable	
Theft	Break and enter dwelling	588	76.8%	1,017	84.3%	Up	73.0%
	Break and enter non-dwelling	361	51.2%	329	46.3%	Stable	
	Receiving or handling stolen goods	186	58.1%	206	55.1%	Stable	
	Motor vehicle theft	634	74.2%	886	77.4%	Up	39.7%
	Steal from motor vehicle	367	71.0%	316	78.2%	Stable	
	Steal from retail store	338	30.5%	479	28.5%	Stable	
	Steal from dwelling	65	41.1%	68	42.8%	Stable	
	Steal from person	44	55.7%	36	50.7%	Stable	
	Stock theft	2	100.0%	0		n.c.	
	Fraud	227	62.5%	289	68.3%	Stable	
Other theft	125	34.4%	112	33.9%	Stable		
Arson		25	33.8%	29	32.6%	Stable	
Malicious damage to property		512	35.5%	510	32.5%	Stable	
Drug offences	Possession and/or use of cocaine	5	23.8%	7	70.0%	n.c.	
	Possession and/or use of narcotics	0		2	100.0%	n.c.	
	Possession and/or use of cannabis	175	15.4%	171	16.6%	Stable	
	Possession and/or use of amphetamines	9	69.2%	14	58.3%	n.c.	
	Possession and/or use of ecstasy	4	28.6%	3	30.0%	n.c.	
	Possession and/or use of other drugs	14	23.3%	13	30.2%	n.c.	
	Dealing, trafficking in cocaine	16	100.0%	15	100.0%	n.c.	
	Dealing, trafficking in narcotics	0		0		n.c.	
	Dealing, trafficking in cannabis	24	77.4%	36	85.7%	Stable	
	Dealing, trafficking in amphetamines	3	100.0%	4	100.0%	n.c.	
	Dealing, trafficking in ecstasy	4	100.0%	2	100.0%	n.c.	
	Dealing, trafficking in other drugs	4	66.7%	0		n.c.	
	Cultivating cannabis	3	50.0%	3	75.0%	n.c.	
	Manufacture drug	0		0		n.c.	
	Importing drugs	0		0		n.c.	
Other drug offences	5	6.5%	6	8.1%	n.c.		
Prohibited and regulated weapons offences		132	32.4%	150	26.8%	Stable	
Disorderly conduct	Trespass	141	12.6%	267	18.6%	Up	89.4%
	Offensive conduct	20	9.3%	21	9.1%	Stable	
	Offensive language	4	7.7%	6	8.0%	n.c.	
	Criminal intent	219	90.1%	250	83.6%	Stable	
Betting and gaming offences		0		0		n.c.	
Liquor offences		1	0.4%	1	0.7%	n.c.	
Pornography offences		12	14.3%	8	12.3%	n.c.	
Prostitution offences		0		0		n.c.	
Against justice procedures	Escape custody	11	84.6%	13	100.0%	n.c.	
	Breach Apprehended Violence Order	470	99.4%	512	100.0%	Stable	
	Breach bail conditions	1,387	99.1%	1,535	98.7%	Stable	
	Fail to appear	0		0		n.c.	
	Resist or hinder officer	74	51.4%	91	43.5%	Stable	
	Other offences against justice procedures	9	90.0%	12	92.3%	n.c.	
Transport regulatory offences		24	0.1%	28	0.2%	Stable	
Other offences		196	3.2%	151	16.6%	Stable	

Figure 3.5: Offences with the largest change in the number of adults proceeded against to court by the NSW Police Force

Between the 12 months to March 2022 and the 12 months to March 2023

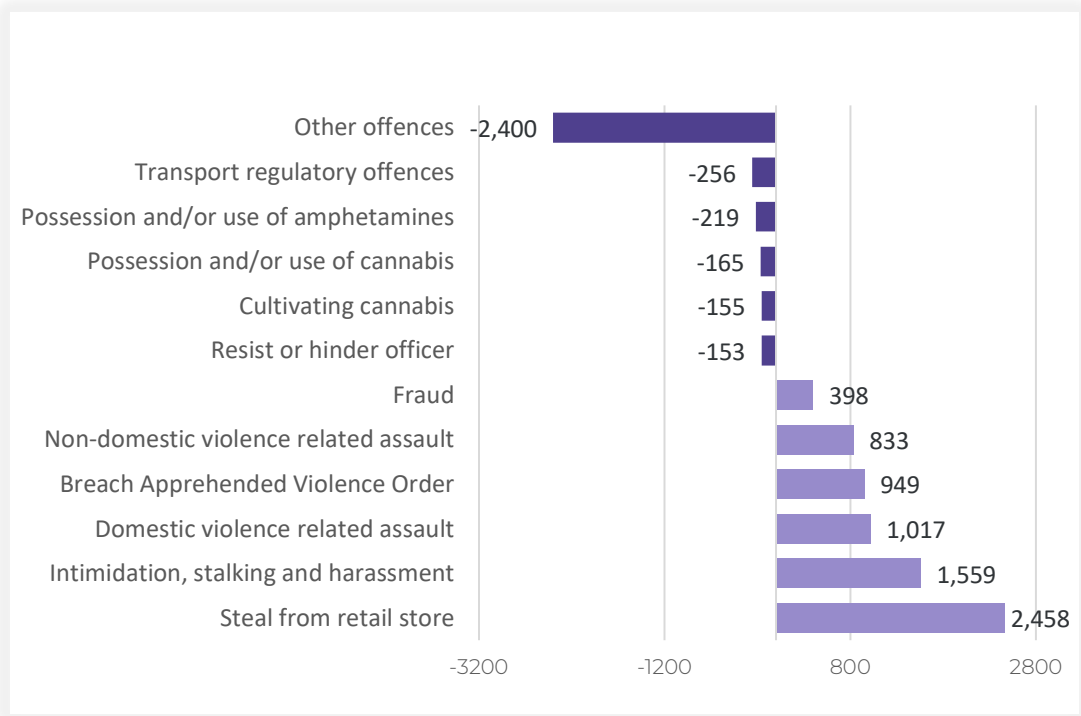
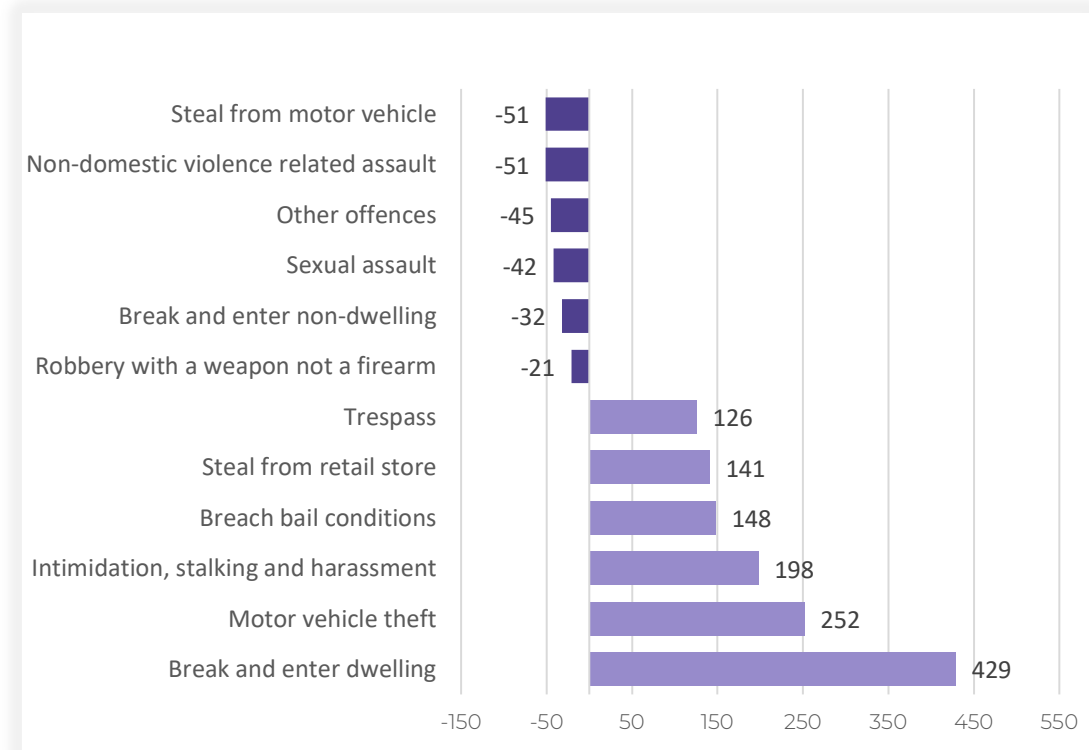


Figure 3.6: Offences with the largest change in the number of young people proceeded against to court by the NSW Police Force

Between the 12 months to March 2022 and the 12 months to March 2023



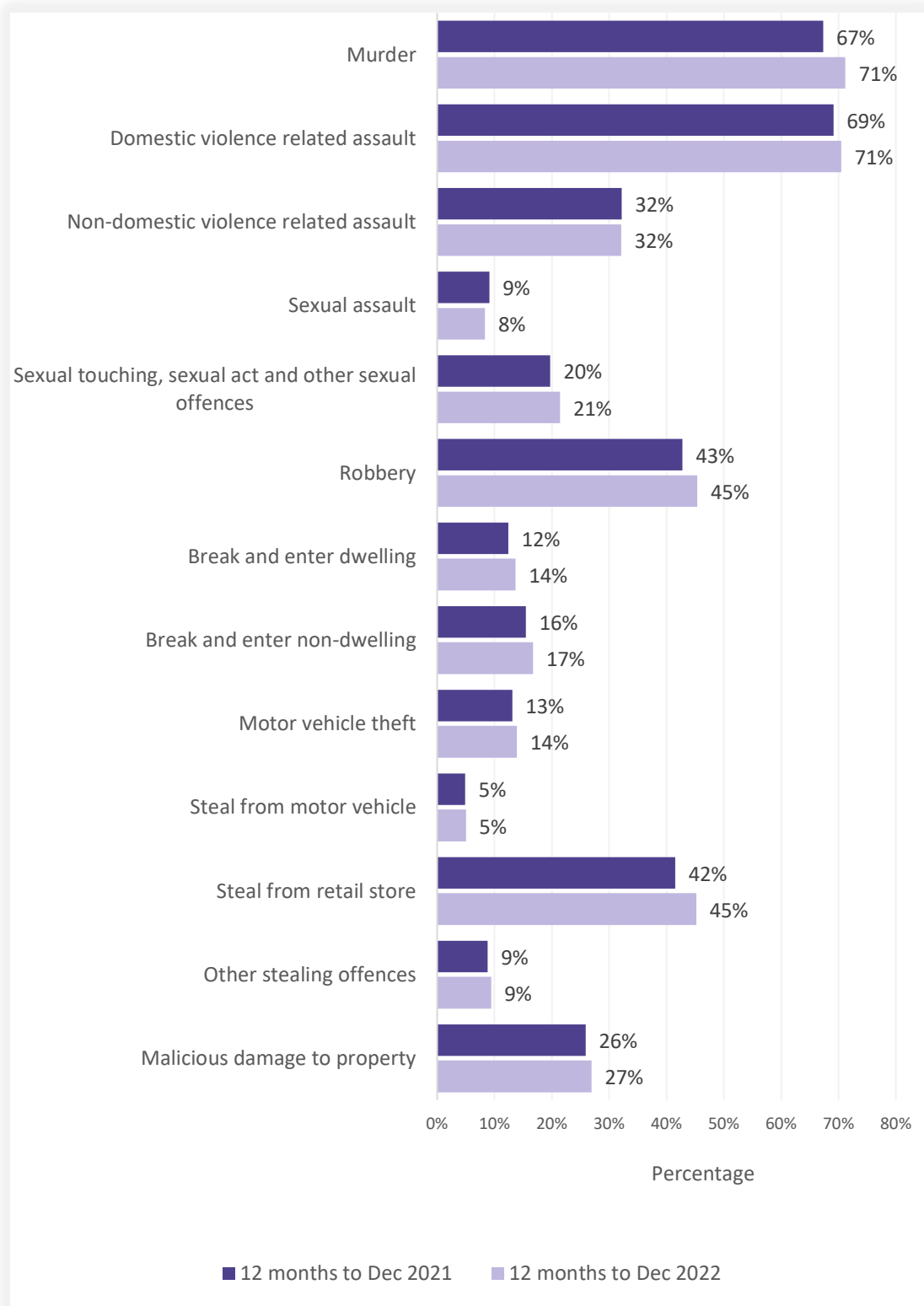
NSW Recorded Crime Statistics, March Quarter 2023

Table 3.7: Incidents of all 62 criminal offence types by whether legal proceedings commenced within 90 days of reporting
Over the two years to December 2022

Offence category		Recorded criminal incidents over the 12 months to December 2021			Recorded criminal incidents over the 12 months to December 2022		
		Proceedings commenced within 90 days	Total number recorded	% proceedings commenced within 90 days	Proceedings commenced within 90 days	Total number recorded	% proceedings commenced within 90 days
Homicide	Murder	35	52	67.3%	42	59	71.2%
	Attempted murder	9	19	47.4%	9	13	69.2%
	Murder accessory, conspiracy	0	1	0.0%	1	1	100.0%
	Manslaughter	1	3	33.3%	6	11	54.5%
Assault	Domestic violence related assault	22,206	32,125	69.1%	23,633	33,522	70.5%
	Non-domestic violence related assault	9,127	28,307	32.2%	9,890	30,796	32.1%
	Assault Police	2,282	2,594	88.0%	2,481	2,745	90.4%
Sexual offences	Sexual assault	675	7,409	9.1%	648	7,815	8.3%
	Sexual touching, sexual act and other sexual offences	1,480	7,508	19.7%	1,603	7,489	21.4%
Abduction and kidnapping		120	207	58.0%	116	199	58.3%
Robbery	Robbery without a weapon	371	957	38.8%	418	972	43.0%
	Robbery with a firearm	44	86	51.2%	57	105	54.3%
	Robbery with a weapon not a firearm	340	722	47.1%	356	754	47.2%
Blackmail and extortion		14	127	11.0%	17	836	2.0%
Intimidation, stalking and harassment		18,384	41,170	44.7%	20,055	42,886	46.8%
Other offences against the person		574	1,902	30.2%	393	1,330	29.5%
Theft	Break and enter dwelling	2,213	17,878	12.4%	2,561	18,747	13.7%
	Break and enter non-dwelling	1,110	7,155	15.5%	1,241	7,415	16.7%
	Receiving or handling stolen goods	5,837	7,593	76.9%	6,135	7,843	78.2%
	Motor vehicle theft	1,374	10,488	13.1%	1,711	12,291	13.9%
	Steal from motor vehicle	1,349	27,735	4.9%	1,367	27,163	5.0%
	Steal from retail store	7,454	17,982	41.5%	10,103	22,328	45.2%
	Steal from dwelling	1,002	16,436	6.1%	1,044	15,153	6.9%
	Steal from person	327	1,781	18.4%	360	1,953	18.4%
	Stock theft	11	321	3.4%	3	256	1.2%
	Fraud	3,675	45,866	8.0%	3,337	46,569	7.2%
Other theft	1,803	17,332	10.4%	1,912	18,029	10.6%	
Arson		196	3,780	5.2%	196	3,345	5.9%
Malicious damage to property		12,748	49,291	25.9%	13,040	48,490	26.9%
Drug offences	Possession and/or use of cocaine	1,742	2,343	74.3%	1,966	2,648	74.2%
	Possession and/or use of narcotics	752	1,216	61.8%	735	1,197	61.4%
	Possession and/or use of cannabis	12,311	16,210	75.9%	11,574	15,614	74.1%
	Possession and/or use of amphetamines	5,455	7,407	73.6%	4,639	6,330	73.3%
	Possession and/or use of ecstasy	356	529	67.3%	711	879	80.9%
	Possession and/or use of other drugs	3,141	6,582	47.7%	2,829	6,137	46.1%
	Dealing, trafficking in cocaine	987	1,422	69.4%	1,059	1,293	81.9%
	Dealing, trafficking in narcotics	343	408	84.1%	321	369	87.0%
	Dealing, trafficking in cannabis	632	810	78.0%	456	572	79.7%
	Dealing, trafficking in amphetamines	2,307	2,928	78.8%	1,624	1,941	83.7%
	Dealing, trafficking in ecstasy	134	181	74.0%	149	186	80.1%
	Dealing, trafficking in other drugs	370	549	67.4%	248	396	62.6%
	Cultivating cannabis	709	1,080	65.6%	567	814	69.7%
Manufacture drug	31	53	58.5%	32	59	54.2%	
Importing drugs	77	199	38.7%	63	157	40.1%	
Other drug offences	1,170	5,894	19.9%	1,052	5,499	19.1%	
Prohibited and regulated weapons offences		6,116	14,807	41.3%	5,789	13,220	43.8%
Disorderly conduct	Trespass	3,562	9,377	38.0%	4,272	10,363	41.2%
	Offensive conduct	2,485	3,748	66.3%	2,414	3,611	66.9%
	Offensive language	1,549	1,921	80.6%	1,234	1,601	77.1%
	Criminal intent	1,921	2,421	79.3%	2,082	2,616	79.6%
Betting and gaming offences		13	59	22.0%	26	874	3.0%
Liquor offences		2,791	8,407	33.2%	3,835	11,039	34.7%
Pornography offences		221	862	25.6%	271	1,043	26.0%
Prostitution offences		0	18	0.0%	5	23	21.7%
Against justice procedures	Escape custody	144	166	86.7%	127	149	85.2%
	Breach Apprehended Violence Order	17,417	21,218	82.1%	18,425	22,525	81.8%
	Breach bail conditions	17,332	51,155	33.9%	18,369	53,287	34.5%
	Fail to appear	8	810	1.0%	14	954	1.5%
	Resist or hinder officer	4,730	5,620	84.2%	4,720	5,663	83.3%
	Other offences against justice procedures	1,242	2,059	60.3%	1,347	2,390	56.4%
Transport regulatory offences		63,433	73,700	86.1%	53,760	65,813	81.7%
Other offences		23,945	93,314	25.7%	8,205	20,668	39.7%

Figure 3.8: Percentage of recorded criminal incidents for major offences by whether legal proceedings commenced within 90 days of reporting

Over the two years to December 2022



SECTION 4: POLICING ACTIVITY

Table 4.1: Selected policing activities

Over the five years to March 2023

	Number of selected policing activities					2 Year Trend		5 Year Trend	
	12 months to March 2019	12 months to March 2020	12 months to March 2021	12 months to March 2022	12 months to March 2023	Number change	Annual percentage change	Number change	Annual average percentage change
Bail compliance checks	103,680	94,583	123,530	133,551	135,430	1,879	Stable	31,750	6.9%
ADVO compliance checks	39,902	55,585	83,920	123,177	139,785	16,608	Stable	99,883	36.8%
Move-on directions	104,798	113,253	101,764	97,670	84,302	-13,368	-13.7%	-20,496	-5.3%
Searches	279,981	288,403	264,548	236,191	207,766	-28,425	-12.0%	-72,215	-7.2%
Vehicle searches	45,040	43,620	48,161	43,098	33,339	-9,759	-22.6%	-11,701	-7.2%
Person searches	229,251	240,863	213,584	190,925	172,004	-18,921	-9.9%	-57,247	-6.9%
Strip searches	5,690	3,920	2,803	2,168	2,423	255	Stable	-3,267	-19.2%
Convey/detain person to mental health facility	15,113	16,995	18,091	19,205	21,068	1,863	9.7%	5,955	8.7%

NSW Recorded Crime Statistics, March Quarter 2023

Table 4.2: Non-criminal domestic violence episodes by Statistical Area (SA4)
Over the five years to March 2023

Statistical Area	Number of activities					Trend and average annual percentage change	
	12 months to March 2019	12 months to March 2020	12 months to March 2021	12 months to March 2022	12 months to March 2023	2 Year Trend	5 Year Trend
						Percentage change	average percentage change
Greater Sydney	45,436	47,807	48,375	45,101	42,448	Stable	Stable
Baulkham Hills and Hawkesbury	1,028	1,166	1,172	1,160	1,080	Stable	Stable
Blacktown	5,243	5,339	5,337	5,327	5,027	Stable	Stable
Central Coast	4,355	4,713	4,988	4,595	4,390	Stable	Stable
City and Inner South	3,375	3,457	3,574	3,437	3,252	Stable	Stable
Eastern Suburbs	1,730	1,950	1,999	2,057	1,720	Stable	Stable
Inner South West	5,174	5,328	5,101	4,871	4,408	Stable	-3.9%
Inner West	1,988	2,080	2,134	1,871	1,868	Stable	Stable
North Sydney and Hornsby	1,548	1,706	1,844	1,783	1,705	Stable	2.4%
Northern Beaches	1,547	1,670	1,566	1,359	1,333	Stable	-3.7%
Outer South West	3,494	3,584	3,650	3,267	3,213	Stable	Stable
Outer West and Blue Mountains	4,584	4,802	4,982	4,181	4,169	Stable	-2.3%
Parramatta	4,127	4,349	4,413	4,193	3,999	Stable	Stable
Ryde	1,021	1,141	1,155	1,104	1,041	Stable	Stable
South West	4,519	4,695	4,622	4,302	3,850	Stable	-3.9%
Sutherland	1,703	1,827	1,838	1,594	1,393	Stable	-4.9%
Regional NSW	35,973	38,635	40,059	38,597	38,087	Stable	1.4%
Capital Region	2,262	2,574	2,888	2,815	2,670	Stable	4.2%
Central West	3,004	3,199	3,335	3,161	3,159	Stable	1.3%
Coffs Harbour - Grafton	1,939	1,907	2,036	1,923	2,139	11.2%	2.5%
Far West and Orana	3,624	3,621	3,843	3,760	3,667	Stable	Stable
Hunter Valley excluding Newcastle	2,748	2,860	3,200	3,080	3,281	6.5%	4.5%
Illawarra	3,502	3,756	3,668	3,609	3,601	Stable	Stable
Mid North Coast	3,064	3,284	3,405	3,157	2,789	Stable	Stable
Murray	1,737	1,967	2,046	1,952	1,935	Stable	2.7%
New England and North West	3,665	3,897	3,746	3,868	3,593	Stable	Stable
Newcastle and Lake Macquarie	3,495	3,939	4,411	4,185	4,116	Stable	4.2%
Richmond - Tweed	2,681	2,789	2,868	2,763	2,909	Stable	2.1%
Riverina	2,601	2,963	2,822	2,508	2,344	Stable	-2.6%
Southern Highlands and Shoalhaven	1,651	1,879	1,791	1,816	1,884	3.7%	3.4%
NSW	81,429	86,453	88,443	83,710	80,554	Stable	Stable

Table 4.3: Ratio to NSW rate of non-criminal domestic violence episodes per 100,000 population by Statistical Area (SA4)

Over the five years to March 2023

Statistical Area	12 months to March 2019	12 months to March 2020	12 months to March 2021	12 months to March 2022	12 months to March 2023
Greater Sydney	0.8	0.8	0.8	0.8	0.8
Baulkham Hills and Hawkesbury	0.4	0.4	0.4	0.4	0.4
Blacktown	1.4	1.3	1.2	1.3	1.3
Central Coast	1.3	1.3	1.3	1.3	1.3
City and Inner South	0.9	0.9	1.0	1.0	1.0
Eastern Suburbs	0.6	0.7	0.7	0.8	0.7
Inner South West	0.8	0.8	0.8	0.8	0.7
Inner West	0.6	0.6	0.6	0.6	0.6
North Sydney and Hornsby	0.3	0.4	0.4	0.4	0.4
Northern Beaches	0.6	0.6	0.5	0.5	0.5
Outer South West	1.2	1.1	1.1	1.1	1.1
Outer West and Blue Mountains	1.4	1.4	1.4	1.2	1.3
Parramatta	0.8	0.8	0.8	0.8	0.8
Ryde	0.5	0.5	0.5	0.5	0.5
South West	1.0	0.9	0.9	0.9	0.8
Sutherland	0.7	0.7	0.7	0.7	0.6
Regional NSW	1.3	1.3	1.3	1.3	1.4
Capital Region	1.0	1.0	1.1	1.1	1.1
Central West	1.4	1.4	1.4	1.4	1.5
Coffs Harbour - Grafton	1.4	1.2	1.3	1.3	1.5
Far West and Orana	3.1	2.9	3.0	3.1	3.1
Hunter Valley excluding Newcastle	1.0	0.9	1.0	1.0	1.1
Illawarra	1.1	1.1	1.1	1.1	1.2
Mid North Coast	1.4	1.4	1.4	1.3	1.2
Murray	1.4	1.5	1.5	1.5	1.6
New England and North West	1.9	1.9	1.8	2.0	1.9
Newcastle and Lake Macquarie	0.9	1.0	1.0	1.0	1.1
Richmond - Tweed	1.1	1.0	1.0	1.0	1.1
Riverina	1.6	1.7	1.6	1.5	1.4
Southern Highlands and Shoalhaven	1.0	1.1	1.0	1.1	1.2
NSW	1.0	1.0	1.0	1.0	1.0

APPENDIX 1

REGIONAL

COMPARISONS

Local Government Areas

NSW Recorded Crime Statistics, March Quarter 2023

Appendix
Table 1.1: Trends in recorded criminal incidents for major offences, NSW LGAs

Over the two years to March 2023

NSW LGA	Murder	Domestic violence related assault	Non-domestic violence related assault	Sexual assault	Sexual touching, sexual act and other sexual offences	Robbery	Break and enter dwelling	Break and enter non-dwelling	Motor vehicle theft	Steal from motor vehicle	Steal from retail store	Other stealing offences	Malicious damage to property
Albury	ns	17.4	42.2	ns	ns	ns	82.3	ns	ns	ns	ns	ns	ns
Armidale Regional	ns	ns	ns	ns	ns	52.8	ns	115.8	ns	ns	ns	ns	ns
Ballina	ns	ns	ns	ns	ns	ns	ns	ns	ns	ns	ns	ns	ns
Balranald	ns	ns	ns	ns	ns	ns	ns	ns	ns	ns	ns	ns	ns
Bathurst Regional	ns	ns	ns	ns	ns	ns	ns	ns	-38.1	ns	ns	ns	ns
Bayside	13.0	16.1	ns	ns	ns	ns	ns	ns	ns	106.3	ns	7.7	ns
Bega Valley	ns	ns	ns	ns	ns	ns	ns	ns	ns	ns	ns	ns	6.2
Bellingen	ns	ns	ns	ns	ns	61.9	ns	ns	ns	ns	ns	ns	ns
Berrigan	100.0	ns	ns	ns	ns	ns	ns	ns	ns	ns	ns	ns	ns
Blacktown	ns	ns	ns	ns	ns	ns	ns	ns	ns	38.4	ns	ns	ns
Bland	ns	ns	ns	ns	ns	ns	ns	ns	ns	ns	ns	ns	ns
Blayney	ns	ns	ns	ns	ns	ns	ns	ns	ns	ns	ns	ns	ns
Blue Mountains	ns	25.7	ns	ns	ns	ns	ns	ns	ns	52.9	ns	34.6	ns
Bogan	57.1	ns	ns	ns	ns	ns	135.0	ns	ns	ns	ns	ns	ns
Bourke	ns	67.4	ns	ns	ns	ns	ns	ns	ns	ns	ns	ns	ns
Brewarrina	ns	ns	ns	ns	ns	ns	ns	ns	ns	ns	ns	ns	ns
Broken Hill	36.4	ns	ns	ns	ns	ns	ns	36.1	ns	83.3	ns	ns	ns
Burwood	ns	ns	ns	ns	ns	94.4	ns	ns	ns	ns	ns	ns	ns
Byron	ns	ns	ns	ns	ns	ns	ns	ns	ns	ns	ns	ns	-21.2
Cabonne	ns	ns	ns	ns	ns	ns	ns	ns	ns	ns	ns	ns	ns
Camden	ns	43.3	ns	ns	ns	18.5	ns	ns	ns	55.8	ns	ns	ns
Campbelltown	ns	ns	ns	ns	ns	ns	ns	ns	-21.5	62.3	ns	ns	ns
Canada Bay	ns	ns	ns	ns	ns	ns	ns	ns	ns	ns	ns	ns	ns
Canterbury-Bankstown	ns	32.5	ns	ns	ns	ns	ns	25.7	ns	ns	ns	ns	ns
Carrathool	ns	ns	ns	ns	ns	ns	ns	ns	ns	ns	ns	ns	ns
Central Coast	13.1	ns	ns	ns	ns	ns	ns	13.8	ns	27.2	ns	ns	ns
Central Darling	ns	ns	ns	ns	ns	ns	ns	ns	ns	ns	ns	ns	ns
Cessnock	ns	ns	ns	-41.2	ns	43.1	ns	ns	ns	ns	ns	4.6	ns
Clarence Valley	39.0	ns	ns	ns	ns	ns	ns	33.0	18.0	ns	ns	ns	ns
Cobar	ns	4.5	ns	ns	ns	ns	ns	ns	ns	ns	ns	ns	ns
Coffs Harbour	16.4	ns	ns	ns	ns	17.5	-46.1	ns	ns	66.7	ns	ns	ns
Coolamon	ns	ns	ns	ns	ns	ns	ns	ns	ns	ns	ns	ns	ns
Coonamble	ns	ns	ns	ns	ns	ns	ns	ns	ns	ns	ns	ns	ns
Cootamundra-Gundagai	82.9	ns	ns	ns	ns	ns	ns	ns	ns	ns	ns	ns	ns
Cowra	ns	ns	ns	ns	ns	ns	ns	ns	ns	ns	ns	ns	ns
Cumberland	ns	ns	ns	40.2	ns	20.2	104.3	ns	ns	48.2	12.3	ns	ns
Dubbo Regional	ns	ns	ns	ns	ns	ns	50.0	16.7	ns	ns	ns	16.4	ns
Dungog	ns	ns	ns	ns	ns	ns	ns	ns	ns	ns	ns	ns	ns
Edward River	ns	ns	ns	ns	ns	ns	ns	ns	ns	ns	ns	ns	ns
Eurobodalla	ns	33.8	ns	ns	ns	ns	ns	ns	ns	67.3	ns	ns	ns
Fairfield	ns	ns	59.0	ns	ns	ns	ns	31.6	ns	87.6	ns	ns	ns
Federation	95.8	ns	ns	ns	ns	ns	ns	ns	ns	ns	ns	ns	ns
Forbes	ns	ns	ns	ns	ns	ns	ns	ns	ns	ns	ns	ns	ns
Georges River	ns	ns	ns	ns	ns	ns	ns	ns	ns	91.0	ns	ns	ns

NSW Recorded Crime Statistics, March Quarter 2023

NSW LGA	Murder	Domestic violence related assault	Non-domestic violence related assault	Sexual assault	Sexual touching, sexual act and other sexual offences	Robbery	Break and enter dwelling	Break and enter non-dwelling	Motor vehicle theft	Steal from motor vehicle	Steal from retail store	Other stealing offences	Malicious damage to property
Gilgandra	ns	ns	ns	ns	ns	ns	ns	ns	ns	ns	ns	ns	ns
Glen Innes Severn	ns	ns	ns	ns	ns	ns	ns	ns	ns	ns	ns	ns	56.3
Goulburn Mulwaree	49.1	ns	ns	ns	ns	ns	55.6	ns	ns	55.3	ns	ns	ns
Greater Hume Shire	ns	ns	ns	ns	ns	ns	ns	ns	ns	ns	ns	ns	ns
Griffith	ns	ns	ns	ns	ns	ns	ns	ns	ns	49.4	ns	ns	ns
Gunnedah	ns	ns	ns	ns	ns	ns	ns	ns	ns	ns	ns	ns	-21.8
Gwydir	ns	ns	ns	ns	ns	ns	ns	ns	ns	ns	ns	ns	ns
Hawkesbury	9.8	ns	61.7	ns	ns	ns	ns	ns	ns	ns	27.6	ns	ns
Hay	ns	ns	ns	ns	ns	ns	ns	ns	ns	ns	ns	ns	ns
Hilltops	ns	13.3	ns	ns	ns	ns	ns	ns	ns	ns	ns	ns	ns
Hornsby	ns	ns	ns	ns	ns	ns	ns	76.5	ns	ns	ns	ns	ns
Hunters Hill	ns	ns	ns	ns	ns	ns	ns	ns	ns	ns	ns	ns	ns
Inner West	ns	ns	ns	ns	ns	ns	ns	30.7	ns	ns	ns	ns	ns
Inverell	ns	ns	ns	ns	ns	ns	ns	87.8	ns	ns	ns	ns	ns
Junee	ns	ns	ns	ns	ns	ns	ns	ns	ns	ns	ns	ns	ns
Kempsey	32.0	ns	-42.6	ns	ns	ns	146.2	ns	ns	104.1	ns	ns	ns
Kiama	ns	ns	ns	ns	ns	ns	ns	ns	ns	ns	ns	ns	ns
Ku-ring-gai	ns	ns	ns	ns	ns	ns	ns	ns	ns	ns	ns	ns	ns
Kyogle	ns	ns	ns	ns	ns	ns	ns	ns	ns	ns	ns	ns	ns
Lachlan	ns	ns	ns	ns	ns	56.9	ns	ns	ns	ns	ns	ns	ns
Lake Macquarie	ns	ns	ns	ns	ns	ns	-38.5	30.0	ns	ns	ns	ns	ns
Lane Cove	ns	ns	ns	ns	ns	ns	ns	ns	ns	ns	ns	ns	ns
Leeton	ns	ns	ns	ns	ns	ns	ns	ns	ns	ns	ns	ns	35.4
Lismore	ns	-28.9	ns	ns	ns	ns	33.7	ns	ns	ns	ns	ns	-34.8
Lithgow	ns	ns	ns	ns	ns	ns	ns	ns	ns	ns	ns	ns	ns
Liverpool	ns	26.0	ns	ns	ns	ns	ns	ns	ns	63.4	14.0	ns	ns
Liverpool Plains	ns	ns	ns	ns	ns	ns	ns	ns	ns	ns	ns	ns	ns
Lockhart	ns	ns	ns	ns	ns	ns	ns	ns	ns	ns	ns	ns	ns
Lord Howe Island	ns	ns	ns	ns	ns	ns	ns	ns	ns	ns	ns	ns	ns
Maitland	43.8	22.1	ns	ns	ns	ns	ns	60.4	ns	ns	-14.1	ns	ns
Mid-Coast	ns	ns	ns	ns	ns	ns	-38.1	ns	ns	23.0	-17.6	ns	ns
Mid-Western Regional	ns	ns	ns	ns	ns	ns	ns	ns	ns	ns	ns	ns	ns
Moree Plains	ns	ns	ns	ns	ns	ns	ns	53.4	ns	ns	ns	ns	ns
Mosman	ns	ns	ns	ns	ns	-24.4	ns	ns	ns	ns	ns	ns	ns
Murray River	ns	ns	ns	ns	ns	ns	ns	ns	ns	ns	ns	ns	ns
Murrumbidgee	ns	ns	ns	ns	ns	ns	ns	ns	ns	ns	ns	ns	ns
Muswellbrook	ns	ns	ns	ns	ns	ns	ns	ns	ns	ns	ns	ns	ns
Nambucca Valley	ns	ns	ns	ns	ns	ns	ns	ns	ns	121.4	ns	ns	ns
Narrabri	ns	ns	ns	ns	ns	ns	ns	ns	ns	ns	ns	ns	ns
Narrandera	ns	ns	ns	ns	ns	ns	ns	ns	ns	ns	ns	ns	ns
Narromine	ns	ns	ns	ns	ns	ns	ns	ns	ns	ns	ns	ns	ns
Newcastle	ns	ns	23.2	ns	ns	25.4	ns	29.6	20.8	ns	ns	ns	ns
North Sydney	ns	ns	ns	21.9	ns	ns	ns	ns	ns	ns	ns	-10.0	ns
Northern Beaches	ns	ns	ns	ns	ns	ns	ns	ns	-30.4	ns	ns	ns	ns
Oberon	ns	ns	ns	ns	ns	ns	ns	ns	ns	ns	ns	ns	ns
Orange	ns	ns	ns	ns	ns	ns	-41.9	2.1	ns	ns	-25.9	ns	ns
Parkes	ns	23.9	ns	ns	ns	ns	ns	ns	ns	85.2	36.9	ns	ns

NSW Recorded Crime Statistics, March Quarter 2023

NSW LGA	Murder	Domestic violence related assault	Non-domestic violence related assault	Sexual assault	Sexual touching, sexual act and other sexual offences	Robbery	Break and enter dwelling	Break and enter non-dwelling	Motor vehicle theft	Steal from motor vehicle	Steal from retail store	Other stealing offences	Malignous damage to property
Parramatta	ns	24.7	ns	ns	ns	ns	ns	43.6	ns	77.2	ns	ns	
Penrith	ns	ns	ns	ns	ns	ns	ns	ns	ns	27.3	ns	ns	
Port Macquarie-Hastings	11.2	ns	-31.9	ns	ns	ns	ns	ns	ns	ns	ns	ns	
Port Stephens	13.8	39.6	ns	ns	ns	ns	ns	48.3	ns	88.5	ns	42.1	
Queanbeyan-Palerang Regional	ns	28.8	ns	ns	ns	ns	54.9	ns	ns	ns	-19.5	17.3	
Randwick	ns	ns	ns	43.1	ns	ns	ns	38.3	ns	81.0	23.3	ns	
Richmond Valley	ns	ns	ns	ns	ns	ns	ns	ns	ns	ns	ns	ns	
Ryde	ns	ns	ns	ns	ns	80.0	ns	104.0	ns	ns	ns	ns	
Shellharbour	ns	26.6	ns	ns	ns	ns	ns	ns	ns	ns	ns	ns	
Shoalhaven	ns	ns	ns	ns	ns	ns	ns	ns	ns	ns	ns	17.1	
Singleton	ns	ns	ns	ns	ns	ns	ns	ns	ns	ns	ns	ns	
Snowy Monaro Regional	ns	ns	ns	ns	ns	ns	ns	ns	ns	ns	ns	ns	
Snowy Valleys	ns	ns	ns	ns	ns	ns	ns	ns	ns	ns	ns	ns	
Strathfield	ns	ns	ns	ns	ns	ns	ns	75.0	ns	ns	32.2	ns	
Sutherland Shire	ns	ns	ns	30.1	27.3	ns	ns	ns	ns	37.7	ns	ns	
Sydney	12.1	31.2	35.1	39.7	29.2	35.3	13.4	44.5	ns	40.3	27.6	ns	
Tamworth Regional	ns	ns	ns	ns	ns	ns	44.9	ns	ns	77.3	ns	ns	
Temora	ns	ns	ns	ns	ns	ns	ns	ns	ns	ns	ns	ns	
Tenterfield	ns	ns	ns	ns	ns	ns	ns	ns	ns	ns	ns	ns	
The Hills Shire	ns	ns	ns	ns	ns	ns	104.2	64.9	ns	57.6	32.5	ns	
Tweed	ns	19.1	ns	ns	ns	ns	ns	34.1	ns	62.4	ns	ns	
Unincorporated Far West	ns	ns	ns	ns	ns	ns	ns	ns	ns	ns	ns	ns	
Upper Hunter Shire	ns	ns	ns	ns	ns	ns	ns	ns	ns	ns	-25.0	ns	
Upper Lachlan Shire	ns	ns	ns	ns	ns	ns	ns	ns	ns	ns	ns	ns	
Uralla	ns	ns	ns	ns	ns	ns	ns	ns	ns	ns	ns	ns	
Wagga Wagga	ns	10.9	ns	ns	ns	ns	ns	ns	ns	84.7	ns	ns	
Walcha	ns	ns	ns	ns	ns	ns	ns	ns	ns	ns	ns	ns	
Walgett	ns	ns	ns	ns	ns	ns	ns	ns	ns	ns	ns	ns	
Warren	ns	ns	ns	ns	ns	ns	ns	ns	ns	ns	ns	ns	
Warrumbungle Shire	75.0	48.8	ns	ns	ns	ns	ns	ns	ns	ns	35.5	ns	
Waverley	ns	ns	ns	ns	ns	ns	ns	ns	ns	114.7	ns	ns	
Weddin	ns	ns	ns	ns	ns	ns	ns	ns	ns	ns	ns	ns	
Wentworth	ns	ns	ns	ns	ns	ns	ns	ns	ns	ns	ns	ns	
Willoughby	ns	ns	ns	ns	ns	ns	ns	ns	ns	ns	ns	ns	
Wingecarribee	ns	ns	ns	ns	ns	ns	ns	75.0	ns	ns	ns	33.7	
Wollondilly	ns	ns	ns	ns	ns	ns	ns	ns	ns	ns	ns	ns	
Wollongong	15.6	12.0	42.6	ns	ns	ns	ns	ns	ns	29.6	ns	ns	
Woollahra	ns	ns	ns	ns	ns	ns	ns	ns	ns	ns	ns	ns	
Yass Valley	ns	ns	ns	ns	ns	ns	ns	ns	ns	ns	ns	ns	
NSW	ns	5.2	13.0	ns	ns	ns	8.6	ns	21.3	ns	37.6	ns	ns

NSW Recorded Crime Statistics, March Quarter 2023

Appendix
Table 1.2: Ratio to NSW rate of recorded criminal incidents per 100,000 population for major offences, NSW LGAs

12 months to March 2023

NSW LGA	Murder	Domestic violence related assault	Non-domestic violence related assault	Sexual assault	Sexual touching, sexual act and other sexual offences	Robbery	Break and enter dwelling	Break and enter non-dwelling	Motor vehicle theft	Steal from motor vehicle	Steal from retail store	Other stealing offences	Malicious damage to property
Albury	3.0	1.6	1.8	1.7	1.4	1.2	2.0	2.8	1.6	3.3	1.3	1.6	2.1
Armidale Regional		1.6	1.8	1.9	1.8	1.9	3.5	2.1	1.8	2.0	1.4	1.6	2.2
Ballina	3.7	0.6	0.9	0.9	0.7	1.4	0.7	1.2	1.2	1.1	0.5	1.0	0.9
Balranald													
Bathurst Regional		1.8	1.3	1.3	1.7	1.2	1.6	1.3	1.2	1.1	1.1	1.1	1.5
Bayside		1.0	0.6	0.5	0.5	0.6	0.5	0.4	0.6	0.7	1.1	0.9	0.7
Bega Valley		0.6	0.6	0.6	1.2	0.5	0.3	0.7	0.4	0.3	0.5	0.8	0.9
Bellingen		1.0	0.9	1.3	1.2	0.3	1.1	2.4	0.8	0.8	0.2	1.1	1.2
Berrigan		1.5	1.1	1.3	1.0	1.0	0.8	3.1	1.0	0.7	0.1	0.9	1.7
Blacktown	0.4	1.2	1.0	0.9	1.0	1.8	0.9	0.7	1.1	1.2	1.2	1.0	1.1
Bland		1.2	1.2	1.1	1.0		0.9	4.3	1.7	0.9		1.0	1.3
Blayney		0.9	0.4	0.7	0.9		0.6	2.0	0.8	0.5	0.3	0.8	1.1
Blue Mountains		0.7	0.7	1.1	1.0	0.2	0.6	0.6	0.4	0.4	0.5	0.6	1.2
Bogan													
Bourke													
Brewarrina													
Broken Hill		3.9	2.4	1.0	2.1	0.5	3.3	2.6	1.7	1.4	1.5	1.6	2.7
Burwood		0.5	0.8	0.6	0.7	1.9	1.1	1.0	0.5	0.8	2.5	1.4	0.7
Byron		0.8	1.5	1.5	1.6	0.2	0.7	1.7	1.4	1.1	0.4	1.5	1.1
Cabonne		0.6	0.4	0.8	0.6		0.8	2.1	0.8	0.5	0.3	0.7	0.6
Camden		0.6	0.5	0.5	0.6	0.4	0.3	0.4	0.3	0.6	0.5	0.4	0.5
Campbelltown	0.9	1.3	1.0	1.1	1.1	1.2	0.8	0.6	1.0	0.9	1.5	0.8	1.0
Canada Bay	1.9	0.4	0.4	0.4	0.5	0.3	0.7	0.5	0.6	0.6	0.4	0.7	0.5
Canterbury-Bankstown	3.6	0.9	0.7	0.6	0.7	1.0	0.6	0.5	0.9	0.8	0.5	0.6	0.6
Carrathool													
Central Coast	1.9	1.2	1.1	1.2	1.2	0.9	0.7	0.8	0.8	0.9	1.0	0.8	1.1
Central Darling													
Cessnock	2.6	1.1	1.2	1.6	1.0	1.3	1.4	1.9	2.8	1.7	0.9	1.6	1.5
Clarence Valley		1.3	1.2	1.1	1.1	1.4	1.3	2.2	1.6	1.4	0.7	1.6	1.3
Cobar		1.6	1.4	1.8	2.1		2.1	7.1	4.2	1.9	0.5	2.3	2.7
Coffs Harbour		1.9	1.8	1.6	1.5	1.8	1.6	1.5	1.8	1.7	1.3	1.4	1.6
Coolamon		0.5	0.3	1.2	0.7		0.6	0.7	0.6	0.1		0.3	0.7
Coonamble		4.0	2.9	2.4	3.7	1.1	11.1	10.9	4.4	3.1	0.7	2.6	4.5
Cootamundra-Gundagai		1.6	1.1	1.3	1.6	0.4	0.9	1.6	1.1	0.4	0.2	0.9	1.0
Cowra		1.5	1.6	1.4	1.4	1.3	4.0	1.7	1.7	1.0	1.2	1.2	1.8
Cumberland	1.4	0.9	0.8	0.7	0.7	1.3	1.0	0.9	1.0	1.1	0.6	0.8	0.7
Dubbo Regional		2.8	2.1	1.3	1.8	1.9	4.0	5.4	3.3	3.2	2.1	1.9	2.7
Dungog		0.9	0.6	0.9	0.7		0.4	0.6	0.9	0.7	0.0	1.1	0.9
Edward River		2.1	1.9	0.7	2.1	0.5	1.7	1.5	0.8	1.1	0.4	1.2	2.0
Eurobodalla		1.3	1.3	1.1	1.4	0.4	1.1	2.0	1.1	0.9	1.5	1.0	1.3
Fairfield	0.8	1.1	0.6	0.6	0.8	1.3	0.5	0.4	0.8	0.8	0.8	0.6	0.7
Federation		0.9	0.8	0.6	0.7		0.5	1.3	0.8	0.7	0.3	1.0	0.7
Forbes		1.8	1.4	1.0	1.4	0.5	3.0	3.0	1.8	4.0	0.9	1.6	2.0
Georges River		0.7	0.5	0.4	0.5	0.7	0.5	0.3	0.5	0.5	0.8	0.5	0.5

NSW Recorded Crime Statistics, March Quarter 2023

NSW LGA	Murder	Domestic violence related assault	Non-domestic violence related assault	Sexual assault	Sexual touching, sexual act and other sexual offences	Robbery	Break and enter dwelling	Break and enter non-dwelling	Motor vehicle theft	Steal from motor vehicle	Steal from retail store	Other stealing offences	Malicious damage to property
Gilgandra		2.1	1.5	2.2	1.5	2.0	2.0	3.2	1.3	1.0	0.5	1.5	1.7
Glen Innes Severn		1.7	1.6	2.6	1.5	1.0	1.9	4.0	1.5	1.2	1.5	2.0	3.2
Goulburn Mulwaree		1.3	1.2	1.0	1.6	0.8	0.9	1.4	0.8	0.7	1.4	1.5	1.3
Greater Hume Shire		0.9	0.5	0.9	0.9		0.2	1.6	0.8	0.5	0.2	0.6	0.5
Griffith		1.8	1.2	1.7	1.5	1.9	1.8	2.6	1.7	1.6	1.5	1.2	1.6
Gunnedah		1.9	1.3	1.8	1.5		4.1	1.6	3.8	1.7	0.7	1.2	1.8
Gwydir		0.6	0.7	0.8	1.8		1.4	2.2	1.4	0.8	0.1	1.3	0.6
Hawkesbury		1.0	0.8	1.2	1.1	0.3	0.6	0.4	0.7	0.5	0.7	0.6	0.8
Hay													
Hilltops		1.6	1.2	1.2	1.3	0.7	0.8	1.1	0.8	0.7	0.6	0.7	1.2
Hornsby	2.2	0.4	0.3	0.4	0.5	0.4	0.3	0.3	0.2	0.4	0.7	0.3	0.4
Hunters Hill		0.3	0.4	0.6	0.6	0.3	1.0	0.5	0.5	0.7	0.1	0.8	0.4
Inner West		0.7	0.8	0.8	0.9	1.0	0.7	0.7	0.7	0.8	0.9	1.0	0.8
Inverell		2.6	2.2	1.7	1.2	1.7	2.7	1.9	2.7	1.6	0.8	1.4	2.4
Junee		0.6	0.8	1.4	1.5	1.3	0.7	0.5	0.7	0.2	0.1	1.1	0.7
Kempsey	10.9	2.5	1.6	1.2	1.3	2.4	4.4	3.3	3.3	1.8	1.6	2.5	2.0
Kiama		0.3	0.3	0.5	0.8	1.1	0.4	0.7	0.6	1.0	0.1	0.4	0.4
Ku-ring-gai		0.2	0.2	0.4	0.3	0.2	0.5	0.3	0.2	0.3	0.1	0.3	0.3
Kyogle	18.0	0.9	0.8	0.7	0.8		1.2	2.2	1.6	0.6	0.4	0.6	0.7
Lachlan		2.0	1.5	1.9	2.6	2.1	5.6	8.0	4.9	2.3	0.3	2.3	2.3
Lake Macquarie		0.9	0.8	1.0	0.9	0.8	0.9	0.9	1.4	1.1	0.9	0.8	1.0
Lane Cove		0.4	0.3	0.3	0.5	0.3	0.9	0.4	0.4	0.5	0.3	0.7	0.4
Leeton		1.8	1.6	2.4	1.7	0.7	2.4	2.8	1.6	0.7	0.4	1.4	2.2
Lismore		1.2	1.4	1.8	1.4	1.5	1.4	2.7	1.7	1.3	0.6	1.1	1.2
Lithgow		1.7	1.8	1.7	1.7	1.6	1.5	1.5	1.0	1.5	0.8	2.2	1.8
Liverpool	1.4	1.1	0.9	0.7	1.0	1.3	0.9	0.6	1.0	1.2	0.9	0.9	0.9
Liverpool Plains		1.9	1.1	2.2	1.1	2.3	1.5	1.8	1.3	0.9	0.1	0.9	1.3
Lockhart		0.3	0.5	0.3	1.0	1.3	1.0	0.3	1.7	0.4		0.5	0.7
Lord Howe Island													
Maitland		1.7	1.2	1.5	1.4	1.1	1.2	1.3	1.6	1.5	1.4	1.2	1.4
Mid-Coast	1.7	1.3	1.2	1.4	1.7	0.8	2.0	2.3	1.5	1.1	0.9	1.6	1.4
Mid-Western Regional		1.5	1.1	1.5	1.3	0.5	0.8	0.8	1.0	0.4	0.5	0.9	1.4
Moree Plains	13.0	5.1	3.8	2.2	1.5	3.3	7.2	5.3	6.6	3.8	4.1	3.1	4.9
Mosman		0.2	0.3	0.2	0.7		0.5	0.1	0.4	0.5	0.4	0.6	0.4
Murray River		0.6	0.4	0.6	1.2		1.2	3.0	1.9	0.8	0.1	1.5	0.7
Murrumbidgee		1.6	1.2	0.6	0.6	2.4	1.6	1.8	2.1	0.2	0.3	1.1	1.2
Muswellbrook		2.1	2.0	2.0	1.8	1.0	2.2	2.4	1.7	1.3	1.0	2.7	2.1
Nambucca Valley		2.3	1.7	1.2	1.8	1.3	1.7	2.6	1.9	1.5	1.0	1.2	1.9
Narrabri		2.0	1.4	1.5	1.1	0.3	3.9	1.4	2.5	2.0	0.7	1.5	1.5
Narrandera		2.3	1.4	2.5	2.3		2.6	5.1	1.1	1.2	1.3	1.4	3.0
Narromine		2.5	1.7	1.6	2.0	0.7	2.6	5.0	3.1	2.2	0.2	1.5	2.2
Newcastle	2.0	1.1	1.6	1.6	1.2	2.3	2.4	2.0	2.4	3.0	1.5	1.7	1.7
North Sydney		0.3	0.5	0.4	0.6	0.4	0.6	0.5	0.4	0.6	0.6	0.7	0.5
Northern Beaches		0.2	0.5	0.5	0.5	0.4	0.3	0.3	0.4	0.4	0.7	0.5	0.5
Oberon	30.3	0.7	0.5	1.1	2.1		0.8	0.4	0.7	0.4	0.2	0.8	0.6
Orange		2.1	1.8	1.8	1.6	2.1	2.8	1.5	2.1	2.2	1.5	1.1	2.2
Parkes	11.7	2.2	1.9	1.4	2.1	1.5	1.5	1.9	1.7	1.5	1.2	2.2	2.1

NSW Recorded Crime Statistics, March Quarter 2023

NSW LGA	Murder	Domestic violence related assault	Non-domestic violence related assault	Sexual assault	Sexual touching, sexual act and other sexual offences	Robbery	Break and enter dwelling	Break and enter non-dwelling	Motor vehicle theft	Steal from motor vehicle	Steal from retail store	Other stealing offences	Malicious damage to property
Parramatta	0.7	0.7	0.9	0.7	1.0	1.2	1.1	0.7	1.0	1.1	1.3	1.2	0.6
Penrith	1.5	1.2	1.2	1.0	1.0	1.5	1.1	0.9	1.1	1.4	1.3	1.0	1.2
Port Macquarie-Hastings		1.1	1.0	0.9	1.0	0.6	0.7	0.7	0.8	0.7	0.6	1.0	1.2
Port Stephens		1.2	1.2	1.3	1.1	0.7	0.7	1.4	1.1	1.0	0.8	0.9	1.6
Queanbeyan-Palerang Regional		0.8	0.8	0.8	0.8	0.4	0.8	1.3	1.1	1.1	0.5	0.8	0.9
Randwick		0.7	1.0	0.8	0.8	0.7	0.7	0.3	0.7	0.8	0.7	1.1	0.7
Richmond Valley	14.3	1.6	1.5	2.0	1.5	1.5	3.2	3.1	3.0	1.4	0.7	1.5	2.1
Ryde		0.4	0.5	0.5	0.5	0.5	0.8	0.4	0.5	0.5	0.7	0.7	0.5
Shellharbour	4.4	0.8	0.7	1.0	1.2	0.5	0.6	0.5	0.8	0.9	1.2	0.7	1.0
Shoalhaven	1.6	1.0	1.0	1.2	1.1	0.7	1.0	1.4	0.9	0.7	0.9	0.8	1.4
Singleton		0.8	1.0	1.6	1.4	0.2	1.1	2.8	1.1	1.0	0.6	1.1	1.3
Snowy Monaro Regional		0.7	0.8	1.2	0.6		0.3	1.1	0.1	0.3	0.1	0.8	0.8
Snowy Valleys		1.4	1.1	1.3	0.4	0.9	0.6	2.2	0.6	0.5	0.3	1.1	1.2
Strathfield		0.6	0.6	0.5	0.7	0.5	1.2	0.7	0.9	1.2	1.0	1.1	0.5
Sutherland Shire		0.7	0.5	0.6	0.6	0.5	0.3	0.2	0.3	0.4	0.5	0.4	0.6
Sydney	0.8	1.3	3.2	1.7	2.2	3.1	1.1	1.6	0.8	1.0	3.9	4.1	1.6
Tamworth Regional		1.7	1.6	1.6	1.3	2.0	3.5	1.9	1.9	1.6	1.3	1.2	2.1
Temora		1.1	0.8	1.9	0.5	1.4	1.6	2.1	1.2	0.6	0.8	1.2	1.0
Tenterfield		1.9	1.1	1.8	1.9		1.4	1.4	0.6	0.7	0.5	1.2	1.9
The Hills Shire		0.4	0.3	0.4	0.6	0.4	0.4	0.5	0.4	0.4	0.6	0.6	0.5
Tweed	1.7	0.9	1.0	0.6	0.8	1.2	1.0	1.2	1.4	1.0	0.6	1.0	1.0
Unincorporated Far West													
Upper Hunter Shire		1.0	0.9	1.2	0.9	0.3	0.9	1.0	0.9	0.7	0.3	0.9	0.7
Upper Lachlan Shire		0.6	0.4	0.6	0.4	0.5	0.4	0.6	0.7	0.3		0.8	0.6
Uralla		0.9	0.6	0.3	0.5	0.7	0.7	1.1	0.9	0.4	0.1	0.7	0.8
Wagga Wagga	2.5	1.8	1.6	1.3	1.2	0.5	2.9	1.7	1.9	2.5	2.0	1.4	1.9
Walcha		1.7	1.7	3.8	2.2		1.0	2.5	0.2	0.5	0.2	0.7	1.4
Walgett		8.1	3.6	3.0	3.3	1.5	2.1	4.4	2.8	2.6	1.0	2.2	3.7
Warren													
Warrumbungle Shire		2.3	1.7	1.6	1.1		1.9	3.4	1.0	1.3	0.7	2.0	1.3
Waverley	2.4	0.6	1.1	0.8	1.2	0.6	0.5	0.4	0.9	0.5	3.9	1.2	0.7
Weddin		0.3	0.4	0.6	0.6		0.2	0.6	0.5	0.5	0.4	0.6	0.6
Wentworth		2.4	1.2	0.3	1.2		1.0	5.6	1.7	0.9	0.4	1.1	2.7
Willoughby		0.3	0.4	0.6	0.9	0.6	0.5	0.5	0.3	0.5	2.0	0.7	0.4
Wingecarribee		0.6	0.6	1.2	1.2	0.2	0.3	0.4	0.4	0.3	0.2	0.5	0.8
Wollondilly		0.7	0.4	0.5	0.8	0.3	0.3	0.2	0.5	0.3	0.2	0.4	0.6
Wollongong	0.8	0.8	1.0	1.1	0.8	0.9	1.0	1.0	1.1	1.5	1.5	1.0	1.0
Woollahra		0.6	0.6	0.6	0.8	0.2	0.7	0.3	0.7	0.4	0.4	0.8	0.5
Yass Valley		0.8	0.5	0.8	0.6		0.2	0.9	1.1	0.4	0.1	0.5	0.7
NSW	1.0	1.0	1.0	1.0	1.0	1.0	1.0	1.0	1.0	1.0	1.0	1.0	1.0

NSW Recorded Crime Statistics, March Quarter 2023

Appendix
Table 1.3: Number of recorded criminal incidents for major offences, NSW LGAs

12 months to March 2023

NSW LGA	Murder	Domestic violence related assault	Non-domestic violence related assault	Sexual assault	Sexual touching, sexual act and other sexual offences	Robbery	Break and enter dwelling	Break and enter non-dwelling	Motor vehicle theft	Steal from motor vehicle	Steal from retail store	Other stealing offences	Malicious damage to property
Albury	1	375	404	91	74	15	262	144	141	618	225	411	697
Armidale Regional	0	196	211	55	50	13	243	56	82	194	127	214	390
Ballina	1	126	154	40	29	15	80	50	91	166	70	197	260
Balranald	0	9	10	2	2	1	9	1	13	3	0	4	11
Bathurst Regional	0	332	222	56	70	12	166	53	85	166	142	219	383
Bayside	0	714	441	78	86	26	195	59	179	392	561	734	784
Bega Valley	0	90	86	22	39	4	27	24	22	40	51	122	188
Bellingen	0	54	48	16	15	1	34	30	16	37	6	67	96
Berrigan	0	54	37	11	8	2	16	25	14	21	3	36	90
Blacktown	1	2,085	1,574	332	379	167	872	243	684	1,582	1,464	1,763	2,580
Bland	0	28	26	6	5	0	12	22	15	16	0	25	43
Blayney	0	27	13	5	6	0	11	14	10	12	6	28	49
Blue Mountains	0	246	215	82	75	4	112	47	54	119	107	208	556
Bogan	1	33	11	5	1	2	23	47	24	39	4	52	45
Bourke	0	132	72	14	8	3	75	65	34	65	29	65	163
Brewarrina	0	46	34	7	2	2	26	14	7	15	2	14	49
Broken Hill	0	292	167	17	35	2	136	42	49	83	77	130	293
Burwood	0	93	131	22	27	18	105	36	35	114	303	248	171
Byron	0	119	212	53	53	2	58	56	79	131	44	234	245
Cabonne	0	36	22	10	8	0	27	27	18	21	11	43	52
Camden	0	303	225	53	71	11	77	45	65	230	176	238	364
Campbelltown	1	999	699	195	178	51	320	102	278	556	792	607	1,115
Canada Bay	1	135	130	38	40	6	142	45	81	175	119	290	264
Canterbury-Bankstown	8	1,379	1,020	215	225	85	540	184	509	993	584	957	1,448
Carrathool	0	13	8	6	1	0	9	19	11	9	3	12	31
Central Coast	4	1,723	1,533	395	390	74	573	244	445	1,100	1,004	1,184	2,301
Central Darling	0	79	27	9	3	2	23	15	4	6	0	22	47
Cessnock	1	308	291	97	57	20	206	116	281	365	180	459	595
Clarence Valley	0	296	251	55	54	18	166	112	141	256	110	388	418
Cobar	0	27	23	7	8	0	20	27	27	26	6	42	67
Coffs Harbour	0	631	540	118	109	33	289	111	220	440	305	480	777
Coolamon	0	10	5	5	3	0	6	3	4	1	0	6	19
Coonamble	0	64	44	9	13	1	100	39	27	40	8	44	105
Cootamundra-Gundagai	0	75	48	14	17	1	23	17	19	17	8	46	69
Cowra	0	83	79	17	17	4	119	20	35	43	47	69	136
Cumberland	2	923	757	158	157	70	577	192	380	903	421	869	998
Dubbo Regional	0	649	457	72	90	25	519	279	294	605	347	459	917
Dungog	0	35	22	8	6	0	8	5	14	21	1	46	49
Edward River	0	74	63	6	16	1	34	12	11	32	11	47	102
Eurobodalla	0	221	202	44	52	4	105	74	69	129	179	186	316
Fairfield	1	927	532	124	155	64	254	81	250	589	486	561	853
Federation	0	47	38	8	8	0	16	15	17	31	13	58	56
Forbes	0	72	50	9	12	1	65	26	27	126	24	67	112
Georges River	0	450	301	62	69	25	162	43	115	256	384	346	498
Gilgandra	0	38	25	9	6	2	20	13	9	15	6	29	44

NSW Recorded Crime Statistics, March Quarter 2023

NSW LGA	Murder	Domestic violence related assault	Non-domestic violence related assault	Sexual assault	Sexual touching, sexual act and other sexual offences	Robbery	Break and enter dwelling	Break and enter non-dwelling	Motor vehicle theft	Steal from motor vehicle	Steal from retail store	Other stealing offences	Malicious damage to property
Glen Innes Severn	0	63	56	22	12	2	40	33	21	36	39	81	175
Goulburn Mulwaree	0	170	155	31	46	6	65	42	40	76	132	220	257
Greater Hume Shire	0	42	21	10	9	0	6	17	14	20	5	32	34
Griffith	0	203	123	45	38	12	116	65	74	146	124	147	261
Gunnedah	0	103	68	23	18	0	124	20	78	74	26	73	140
Gwydir	0	13	14	4	8	0	16	10	11	14	2	29	18
Hawkesbury	0	291	206	76	67	4	92	25	78	105	135	185	319
Hay	0	20	19	5	4	0	26	12	6	6	4	16	24
Hilltops	0	126	94	23	23	3	35	19	24	45	37	64	135
Hornsby	2	235	196	64	64	14	104	47	60	197	324	236	347
Hunters Hill	0	18	19	8	8	1	33	6	11	34	3	46	36
Inner West	0	512	589	144	148	41	314	122	213	484	485	830	919
Inverell	0	199	154	30	20	7	113	32	77	95	43	111	264
Junee	0	15	19	9	9	2	10	3	7	4	1	31	26
Kempsey	2	322	188	35	38	17	314	96	161	187	149	339	363
Kiama	0	31	29	12	18	6	20	14	22	74	6	41	59
Ku-ring-gai	0	121	78	50	35	7	133	30	48	136	36	168	199
Kyogle	1	36	28	6	7	0	27	19	23	20	11	24	37
Lachlan	0	51	36	11	15	3	80	46	48	48	6	62	85
Lake Macquarie	0	783	697	216	186	38	460	176	477	809	591	722	1,266
Lane Cove	0	63	49	11	18	3	88	13	26	63	40	119	87
Leeton	0	87	70	27	18	2	64	30	30	28	15	70	153
Lismore	0	225	239	78	57	15	149	111	122	195	80	216	331
Lithgow	0	152	149	34	32	8	75	29	33	107	47	209	229
Liverpool	2	1,083	825	155	208	70	510	135	371	938	608	958	1,215
Liverpool Plains	0	61	32	16	8	4	26	13	16	24	2	29	62
Lockhart	0	4	6	1	3	1	8	1	9	4	0	8	14
Lord Howe Island	0	3	1	2	1	0	1	0	0	0	0	1	5
Maitland	0	666	414	134	114	23	244	111	223	454	367	498	739
Mid-Coast	1	547	451	132	149	19	448	203	233	357	262	701	841
Mid-Western Regional	0	167	106	36	30	3	46	19	41	31	41	101	223
Moree Plains	1	276	195	27	18	10	219	64	135	167	157	180	387
Mosman	0	22	34	6	19	0	34	3	19	49	33	75	66
Murray River	0	33	21	8	14	0	35	36	38	35	3	84	57
Murrumbidgee	0	24	17	2	2	2	13	6	12	3	3	18	25
Muswellbrook	0	145	127	32	27	4	85	37	45	74	48	199	211
Nambucca Valley	0	194	134	23	34	6	81	50	63	101	62	112	228
Narrabri	0	108	70	18	13	1	117	17	51	88	28	84	118
Narrandera	0	55	31	14	12	0	35	27	10	23	22	37	103
Narromine	0	68	44	10	12	1	39	30	32	48	3	44	86
Newcastle	2	799	1,047	255	182	92	939	318	648	1,731	766	1,305	1,726
North Sydney	0	78	139	30	39	6	92	33	42	139	116	217	211
Northern Beaches	0	261	468	133	132	26	216	83	166	384	570	641	802
Oberon	1	17	11	6	11	0	10	2	6	8	3	21	20
Orange	0	391	303	75	65	21	284	61	146	331	191	223	587
Parkes	1	136	109	19	28	5	52	26	38	74	50	141	179
Parramatta	1	806	869	163	232	71	654	165	395	941	1,001	1,423	1,014
Penrith	2	1,105	1,035	215	210	78	561	175	386	1,004	844	999	1,601

NSW Recorded Crime Statistics, March Quarter 2023

NSW LGA	Murder	Domestic violence related assault	Non-domestic violence related assault	Sexual assault	Sexual touching, sexual act and other sexual offences	Robbery	Break and enter dwelling	Break and enter non-dwelling	Motor vehicle theft	Steal from motor vehicle	Steal from retail store	Other stealing offences	Malicious damage to property
Port Macquarie-Hastings	0	418	342	79	79	12	150	57	115	198	150	403	621
Port Stephens	0	395	363	97	78	13	131	101	129	265	181	314	709
Queanbeyan-Palerang Regional	0	208	206	48	49	6	117	79	106	235	104	223	360
Randwick	0	378	517	101	103	22	227	34	148	366	277	641	558
Richmond Valley	2	161	142	46	32	8	174	68	112	115	46	154	293
Ryde	0	202	234	59	56	16	234	52	102	234	281	386	371
Shellharbour	2	261	219	74	88	9	116	34	91	237	275	238	457
Shoalhaven	1	470	442	122	115	17	242	143	147	264	282	392	913
Singleton	0	83	94	39	31	1	62	64	45	87	44	120	194
Snowy Monaro Regional	0	62	71	26	11	0	15	23	5	24	4	78	100
Snowy Valleys	0	85	64	19	6	3	22	30	15	25	13	70	112
Strathfield	0	124	114	24	28	5	129	32	63	185	144	230	152
Sutherland Shire	0	640	438	143	134	28	182	53	123	283	369	432	852
Sydney	1	1,196	2,711	358	436	155	533	329	276	744	2,476	3,889	2,088
Tamworth Regional	0	444	390	96	76	29	516	113	194	355	250	345	807
Temora	0	27	19	11	3	2	23	12	11	12	15	31	36
Tenterfield	0	54	28	12	12	0	22	9	7	17	10	37	79
The Hills Shire	0	337	254	83	101	18	200	98	127	282	331	489	584
Tweed	1	381	368	59	73	26	230	112	220	338	177	439	559
Unincorporated Far West	0	4	4	4	5	0	3	3	0	4	3	10	6
Upper Hunter Shire	0	57	48	16	12	1	31	13	21	32	11	57	64
Upper Lachlan Shire	0	20	13	5	3	1	8	5	9	8	0	29	31
Uralla	0	22	13	2	3	1	10	6	9	8	2	20	29
Wagga Wagga	1	524	418	83	77	8	464	109	201	577	397	414	771
Walcha	0	22	20	11	6	0	7	7	1	5	2	10	25
Walgett	0	191	78	16	17	2	27	23	25	49	17	55	126
Warren	0	32	16	4	7	0	23	13	24	31	5	32	44
Warrumbungle Shire	0	91	61	14	9	0	41	29	14	40	19	84	74
Waverley	1	185	293	51	75	10	78	27	98	108	805	357	303
Weddin	0	4	6	2	2	0	2	2	3	6	4	10	13
Wentworth	0	75	35	2	8	0	18	39	20	24	8	38	123
Willoughby	0	104	130	42	64	10	97	38	38	124	460	235	203
Wingecarribee	0	125	114	61	59	2	37	20	35	53	34	113	262
Wollondilly	0	157	88	26	39	4	38	8	40	58	26	94	195
Wollongong	1	711	805	231	165	45	519	193	359	1,080	949	927	1,348
Woollahra	0	130	137	33	42	3	87	16	57	80	65	186	163
Yass Valley	0	56	33	14	9	0	8	14	31	23	4	39	69
In Custody	0	3	1,134	553	162	5	0	0	1	2	0	7	65
NSW	48	34,017	31,707	7,809	7,465	1,883	18,938	7,534	12,836	27,387	24,207	36,124	48,889

NSW Recorded Crime Statistics, March Quarter 2023

Appendix
Table 1.4: Number of recorded criminal incidents for major offences, NSW LGAs

12 months to March 2022

NSW LGA	Murder	Domestic violence related assault	Non-domestic violence related assault	Sexual assault	Sexual touching, sexual act and other sexual offences	Robbery	Break and enter dwelling	Break and enter non-dwelling	Motor vehicle theft	Steal from motor vehicle	Steal from retail store	Other stealing offences	Malicious damage to property
Albury	0	417	344	64	80	25	228	79	168	633	237	375	722
Armidale Regional	0	232	204	61	53	10	159	71	38	233	130	216	361
Ballina	1	141	128	39	37	11	98	34	67	201	78	273	247
Balranald	0	7	6	0	1	0	11	3	3	8	0	15	15
Bathurst Regional	1	319	259	63	71	17	149	43	56	268	117	243	498
Bayside	0	632	380	86	88	24	213	53	140	367	272	694	728
Bega Valley	0	118	99	27	34	2	38	43	20	60	34	115	177
Bellingen	0	42	51	29	23	1	21	16	23	29	13	64	141
Berrigan	0	27	25	8	10	0	22	24	8	12	7	32	70
Blacktown	5	1,991	1,478	323	358	167	778	207	572	1,507	1,058	1,660	2,673
Bland	0	27	25	3	8	0	9	9	9	15	5	25	34
Blayney	0	26	22	10	7	2	25	19	9	11	8	29	35
Blue Mountains	1	211	171	87	72	8	66	38	32	154	70	187	413
Bogan	0	21	11	3	3	0	14	20	9	10	4	38	49
Bourke	0	116	43	23	8	3	68	69	18	65	26	73	166
Brewarrina	0	62	26	3	3	0	11	13	2	8	0	23	55
Broken Hill	0	214	143	13	27	8	156	49	36	84	42	134	295
Burwood	0	89	106	19	27	7	54	36	31	87	228	198	143
Byron	0	133	216	40	35	6	47	43	75	107	57	188	311
Cabonne	0	41	27	14	12	0	27	22	22	25	4	40	58
Camden	1	348	157	48	76	6	65	30	86	268	113	218	321
Campbelltown	3	956	616	199	220	57	320	124	241	708	488	708	1,268
Canada Bay	0	134	123	40	42	6	116	46	74	211	105	305	249
Canterbury-Bankstown	2	1,371	770	192	199	81	444	155	405	1,131	428	910	1,353
Carrathool	0	24	17	7	2	0	10	19	9	8	0	20	26
Central Coast	5	1,524	1,375	390	352	65	575	243	391	1,144	789	1,078	2,356
Central Darling	0	114	21	3	8	0	9	30	5	6	0	18	55
Cessnock	0	311	288	95	97	7	144	73	213	275	124	471	569
Clarence Valley	0	213	241	49	59	7	180	89	106	217	87	390	426
Cobar	0	24	22	5	2	0	9	16	8	16	12	38	64
Coffs Harbour	0	542	477	134	110	30	246	206	203	384	183	433	693
Coolamon	0	9	5	7	5	0	5	8	3	2	0	17	15
Coonamble	0	86	49	8	6	2	49	18	10	19	9	65	134
Cootamundra-Gundagai	0	41	42	9	22	0	16	8	15	14	10	60	60
Cowra	0	100	62	16	34	3	143	32	50	64	34	80	118
Cumberland	5	882	668	125	112	69	480	94	354	836	284	774	919
Dubbo Regional	1	659	420	106	99	23	563	186	252	548	246	481	788
Dungog	0	32	17	10	13	1	12	5	10	13	4	50	55
Edward River	1	61	46	10	5	0	25	3	7	5	10	66	117
Eurobodalla	0	246	151	42	37	18	106	79	52	101	107	169	402
Fairfield	0	834	446	78	129	50	256	72	190	516	259	576	853
Federation	1	24	42	9	9	0	17	22	14	29	23	70	60
Forbes	0	71	80	15	10	2	72	19	33	60	27	86	169
Georges River	0	447	293	61	72	17	182	57	100	272	201	331	434
Gilgandra	0	34	20	10	12	1	24	11	3	11	4	29	52

NSW Recorded Crime Statistics, March Quarter 2023

NSW LGA	Murder	Domestic violence related assault	Non-domestic violence related assault	Sexual assault	Sexual touching, sexual act and other sexual offences	Robbery	Break and enter dwelling	Break and enter non-dwelling	Motor vehicle theft	Steal from motor vehicle	Steal from retail store	Other stealing offences	Malicious damage to property
Glen Innes Severn	0	63	42	19	19	0	75	32	14	29	31	79	112
Goulburn Mulwaree	0	114	136	49	39	6	77	27	42	78	85	205	217
Greater Hume Shire	0	28	20	19	14	0	23	12	22	27	7	41	52
Griffith	0	184	121	31	41	6	107	78	74	120	83	162	264
Gunnedah	0	109	82	20	15	3	134	26	57	103	27	102	179
Gwydir	0	7	13	6	6	0	6	7	8	9	0	20	16
Hawkesbury	0	265	197	47	61	7	76	37	67	97	127	145	295
Hay	0	25	25	6	5	0	11	5	4	4	0	22	30
Hilltops	0	121	83	17	16	2	30	15	29	32	12	71	177
Hornsby	0	232	152	76	60	13	70	29	34	138	279	214	358
Hunters Hill	0	13	18	11	9	0	25	8	13	27	5	35	41
Inner West	5	440	513	128	148	43	269	109	163	533	425	798	899
Inverell	1	203	125	37	33	4	83	60	41	81	100	109	220
Junee	0	27	24	11	13	0	8	3	5	1	6	20	34
Kempsey	1	244	177	61	48	9	266	39	119	177	73	346	434
Kiama	0	31	31	15	10	0	31	26	18	70	6	51	73
Ku-ring-gai	0	144	69	52	45	6	140	36	46	159	42	142	228
Kyogle	0	33	35	11	7	0	22	19	15	15	3	36	48
Lachlan	0	45	46	6	8	3	51	73	43	34	7	57	103
Lake Macquarie	1	839	672	244	193	36	368	286	367	746	547	807	1,345
Lane Cove	0	52	30	16	10	1	55	12	30	80	32	101	76
Leeton	0	100	65	24	18	2	43	7	18	20	7	51	113
Lismore	0	250	336	74	62	20	164	83	137	271	74	259	508
Lithgow	0	154	115	38	33	2	44	12	22	69	58	174	182
Liverpool	0	1,120	655	155	187	58	431	111	327	836	372	840	1,174
Liverpool Plains	0	59	43	12	10	2	19	21	7	11	7	34	69
Lockhart	0	10	9	4	3	0	5	6	6	3	0	14	21
Lord Howe Island	0	18	1	0	0	0	0	1	0	1	0	4	10
Maitland	0	463	339	134	100	27	217	103	139	434	277	580	724
Mid-Coast	1	557	424	123	149	15	493	328	184	348	213	851	888
Mid-Western Regional	0	166	121	48	49	2	39	20	19	31	35	93	188
Moree Plains	0	259	174	29	32	10	242	76	88	191	111	172	463
Mosman	0	28	40	21	19	1	45	8	22	72	19	86	81
Murray River	0	31	28	23	6	0	17	36	31	30	11	81	76
Murrumbidgee	0	13	9	6	6	0	14	3	7	4	1	15	33
Muswellbrook	0	133	115	27	24	3	78	54	51	145	51	187	216
Nambucca Valley	0	188	111	30	34	4	91	42	34	86	28	131	261
Narrabri	0	119	63	18	8	0	87	19	43	67	16	90	132
Narrandera	0	47	33	9	7	3	32	16	6	18	16	33	60
Narromine	0	78	60	12	18	4	29	27	13	31	17	69	60
Newcastle	6	745	1,077	207	155	92	749	300	500	1,433	753	1,276	1,773
North Sydney	0	82	120	33	32	3	83	29	34	122	94	241	226
Northern Beaches	1	290	465	136	151	28	217	89	162	552	455	675	809
Oberon	2	15	13	10	12	0	6	9	4	3	0	28	30
Orange	0	323	295	82	69	19	308	105	143	339	158	301	595
Parke	0	115	88	24	31	1	36	29	25	115	27	103	205
Parramatta	1	793	697	186	201	63	670	176	275	1,035	565	1,278	1,060
Penrith	0	1,109	952	229	263	67	573	191	342	957	663	904	1,561

NSW Recorded Crime Statistics, March Quarter 2023

NSW LGA	Murder	Domestic violence related assault	Non-domestic violence related assault	Sexual assault	Sexual touching, sexual act and other sexual offences	Robbery	Break and enter dwelling	Break and enter non-dwelling	Motor vehicle theft	Steal from motor vehicle	Steal from retail store	Other stealing offences	Malicious damage to property
Port Macquarie-Hastings	0	376	326	116	105	10	179	92	129	245	165	483	596
Port Stephens	1	347	260	94	101	6	140	101	87	197	96	330	499
Queanbeyan-Palerang Regional	0	175	160	62	57	9	120	51	115	308	106	277	307
Randwick	0	369	480	77	72	22	175	37	107	366	153	520	576
Richmond Valley	0	146	125	37	32	2	144	90	96	180	32	169	300
Ryde	0	253	195	44	59	12	130	75	50	201	221	389	349
Shellharbour	1	245	173	55	59	10	94	34	94	284	195	232	415
Shoalhaven	4	443	453	136	132	34	254	104	127	294	243	438	780
Singleton	0	112	75	27	20	1	76	78	68	155	50	137	246
Snowy Monaro Regional	0	63	59	24	19	1	30	16	14	28	6	75	143
Snowy Valleys	0	58	61	25	17	2	23	30	20	26	15	85	141
Strathfield	0	121	90	17	13	10	114	19	36	156	86	174	116
Sutherland Shire	0	688	425	98	103	22	230	61	124	457	268	535	853
Sydney	6	1,067	2,066	265	312	120	394	290	191	619	1,765	3,048	1,819
Tamworth Regional	0	424	369	98	90	17	572	78	215	577	141	339	805
Temora	0	13	15	14	4	0	12	13	9	15	7	31	38
Tenterfield	0	49	32	15	15	0	35	11	18	5	5	35	54
The Hills Shire	0	322	241	87	68	12	193	48	77	238	210	369	428
Tweed	0	385	309	72	75	18	196	78	164	363	109	404	590
Unincorporated Far West	0	0	4	8	16	0	5	0	3	8	2	11	5
Upper Hunter Shire	0	56	37	38	25	1	46	22	11	26	4	76	91
Upper Lachlan Shire	0	10	9	7	4	0	13	9	5	2	0	26	33
Uralla	0	25	16	7	5	0	6	8	9	4	2	13	34
Wagga Wagga	0	470	377	94	95	20	343	83	140	421	215	399	790
Walcha	0	20	8	4	1	0	6	9	0	2	2	8	28
Walgett	0	123	65	13	18	1	43	30	23	30	12	41	145
Warren	0	38	27	2	3	1	16	19	17	27	6	34	48
Warrumbungle Shire	1	52	41	18	12	1	38	20	12	28	20	62	78
Waverley	0	192	259	54	58	8	75	16	77	112	375	326	287
Weddin	0	15	2	5	0	0	6	4	0	5	2	13	23
Wentworth	0	79	48	10	10	0	18	30	22	21	3	47	93
Willoughby	0	108	115	26	53	10	101	40	42	153	362	236	217
Wingecarribee	0	127	100	62	59	3	32	15	20	54	27	105	196
Wollondilly	0	159	78	36	41	2	35	14	38	66	11	103	161
Wollongong	0	615	719	162	173	53	545	235	332	1,140	732	941	1,323
Woollahra	0	106	114	43	36	1	78	7	58	101	72	196	191
Yass Valley	1	35	25	7	7	1	8	8	14	23	6	37	53
In Custody	1	6	831	84	48	1	0	1	0	2	0	6	78
NSW	61	32,329	28,060	7,202	7,185	1,712	17,446	7,252	10,586	27,465	17,588	34,948	48,395

APPENDIX 2

EXPLANATORY NOTES

Appendix 2.1: Explanatory Notes

What are crime statistics?

BOCSAR's crime statistics consist of criminal incidents reported to, or detected by, police and recorded on the NSW Police Force's Computerised Operational Policing System (COPS). While this system is used for record-keeping for all police operations, not just for criminal matters, BOCSAR only reports on criminal incidents and selected policing activities. BOCSAR's crime statistics therefore do not capture crimes that are not recorded on COPS. The Australian Bureau of Statistics conducts regular crime and victim surveys which attempt to capture a snapshot of both reported and unreported crimes.

How to interpret crime statistics

Recorded crime statistics for some offence categories do not accurately reflect the actual level of crime in the community. This is because the number of incidents recorded may be affected by extraneous factors which are not easily measured. In particular:

- > Public willingness to report crime - Many crimes which occur are not reported to police and will therefore not be recorded - for example, a large number of assaults, sexual assaults and robberies are not reported to police.
- > Shifts in policing policy - Recording of those offences which are detected by, rather than reported to police, are strongly affected by policing practices - examples of these are drug offences, drink driving offences, offensive behaviour and receiving stolen goods. Recorded rates for such offences do not accurately reflect actual rates.
- > High visitor populations compared to residential populations - Sydney Local Government Area has relatively high recorded crime rates because, compared with other regions, the resident population is small relative to the number of people in the area. In other words, the area has a high user population which is not reflected in the denominator of the rate calculation.
- > Areas with small residential populations - Recorded crime rates in Local Government Areas with small population sizes are not always a good indicator of offending. Crime rates in areas with populations under 3,000 may be unreliable and should be interpreted with caution.

What offences are included?

BOCSAR's standard quarterly publications report on 13 major offence categories, which include serious personal violence and property offences. In addition to these offences, we also release data for 62 specific offence categories.

From the September Quarter 2021 report, the offence category previously labelled 'indecent sexual assault, act of indecency and other sexual offences' is labelled 'sexual touching, sexual act and other sexual offences'.

Commencing March 2020, the NSW Government issued public health orders under the NSW Public Health Act 2010 (NSW) to limit the spread of COVID-19. Police can issue a fine or court attendance notice for failure to comply with the orders. Breaches of these orders are counted as "other offences" in this report.

What is being counted?

> Incidents - When a crime is reported to, or detected by, the NSW Police they record it as a criminal event on COPS. The event date is the date that the crime was reported. Unless otherwise stated, the date BOCSAR attaches to a crime is the event date. One criminal event can contain multiple criminal incidents. BOCSAR's default counting unit for crime data is criminal incidents with the exception of murder and manslaughter. Criminal incidents are activities detected by or reported to police which involve the same offender(s) and victim(s); occur at the one location during one uninterrupted period of time; fall into one offence category and one incident type.

For murder and manslaughter only, the counting units used are victims.

> Alleged offenders - BOCSAR also reports on alleged offenders or 'Persons of Interest' (POIs) who have had a legal proceeding commenced against them by the NSW Police Force. Within the police recorded crime data POIs may not have been convicted in court, however they have been proceeded against in some way or another by the police. There could be quite some time between an event being recorded by police, an investigation being completed and an alleged offender (i.e. a POI) being charged. Consequently, POIs are counted in the time period they were proceeded against, rather than the time period the event /incident was reported to or recorded by police.

> Legal proceedings against alleged offenders presented in Tables 3.1 and 3.2 include persons proceeded against to court and persons diverted from court (by way of criminal infringement notice, cannabis or other drug caution and diversions under the Young Offenders Act 1997, including Youth Justice Conference, Caution and Warning). Young people proceeded against by way of a Warning for Transport and regulatory offences have been excluded from table 3.2 as Warnings are not a diversion for these offences.

> Young people proceeded against by way of a Warning under the Young Offenders Act 1997 for Transport and regulatory offences have been excluded from table 3.2 as Warnings are not a diversion for these offences.

> Proceeded against to court (breach of bail) in Tables 3.1 and 3.2 includes persons with breach of bail as the only matter on the criminal event recorded by the NSW Police Force. Breaching bail is not a criminal offence by it can lead to being brought to court by police for the court to reconsider bail.

> Infringement Notices (fines) are not included in this report but have been included in past reports as they are not a form of court diversion.

What are crime trends and how are they calculated?

In general, BOCSAR relies upon the Kendall Rank Order Correlation statistical test (or Kendall's tau-b) to determine whether a series is trending upwards, downwards or is stable ($p < .05$). In some tables a stable trend is represented by 'ns' (not significant). The statistical test is applied to the monthly data over the specified period. Where a significant trend is found, the average annual percentage change over the time period is reported. If any of the 12-monthly totals in the series have a value of less than 20, a trend test is not conducted. When this occurs, the relevant cell will be left blank or contain 'n.c.' (not calculated). For murder and manslaughter incidents, the trend test is applied to the monthly number of recorded victims rather than criminal incidents.

How is the ratio to NSW calculated?

The ratio to NSW rate statistics are a comparison of a NSW regional rate per 100,000 population to the NSW rate per 100,000 population. A ratio of one indicates parity with the NSW rate. Ratios indicating double the NSW rate (or more) before rounding are highlighted in red, whilst ratios indicating half the NSW rate (or less) before rounding are highlighted in green. Ratios are not calculated for regions with a population of less than 3,000.

How are 'young people' and 'adults' defined?

The term 'young people' refers to persons aged 10-17 years at the time of the offence; 'adults' refers to persons aged 18 years and older at the time of the offence.

Regional Statistics

Statistics are provided on the number of criminal incidents (victims for murder) recorded for each of the Statistical Areas Level 4 (SA4s) of NSW as defined by the Australian Bureau of Statistics (ABS). Recorded criminal incidents which occurred in correctional, detention or remand centres, however, are not counted in the SA in which the incident occurred. Note that LGA boundaries change from time to time. A criminal incident is counted within a particular region when the location of the offence falls within that region.

What is included in 'selected policing activities'?

- > Bail compliance checks - checks conducted by police to assess if bail conditions are being complied with.
- > ADVO compliance checks - checks conducted by police to assess if ADVO conditions are being complied. These checks can also include checking on the person in need of protection and taking the necessary action if a breach is detected.
- > Move on directions - a 'move on direction' is a direction given to a person by a police officer, under section 198 of the Law Enforcement (Powers and Responsibilities) Act 2002 (NSW), to leave a public place and not return for a specified period.
- > Searches - If the police have reasonable grounds they may, without a warrant, stop and search a person and anything in their possession or under their control, including a vehicle.

- > Detain/convey person to mental health facility - The police detain a person at risk of harm to themselves or others and transport them to a mental health facility for assessment under section 22 of the Mental Health Act 2007 (NSW).

What are non-criminal domestic violence episodes?

Incidents attended by police where a domestic dispute is recorded as having taken place but no criminal incident has been recorded. The vast majority of these episodes are verbal altercations.

Where can I find more detail and explanatory notes?

Detailed definitions and explanatory notes are available at

https://www.bocsar.nsw.gov.au/Pages/bocsar_crime_stats/bocsar_glossary.aspx

APPENDIX 3

LGAs IN STATISTICAL AREAS

Appendix
Table 3.1:

Local Government Areas in Greater Sydney Statistical Areas

Baulkham Hills and Hawkesbury	Blacktown	Central Coast
The Hills Shire*	Blacktown	Central Coast
	Cumberland	
City and Inner South	Eastern Suburbs	Inner South West
Sydney*	Randwick*	Bayside*
	Waverley	Canterbury-Bankstown*
	Woollahra	Georges River
Inner West	North Sydney and Hornsby	Northern Beaches
Burwood	Hornsby*	Northern Beaches
Canada Bay	Ku-ring-gai	
Strathfield*	Lane Cove	
Inner West*	Mosman	
	North Sydney	
	Willoughby	
Outer South West	Outer West and Blue Mountains	Parramatta
Camden*	Blue Mountains*	Cumberland*
Campbelltown	Penrith*	Parramatta*
Wollondilly*	Hawkesbury*	
Ryde	South West	Sutherland
Hunters Hill	Fairfield*	Sutherland Shire*
Ryde*	Liverpool*	

* These LGAs span across two or more Statistical Areas.

These LGAs are listed under the Greater Sydney Statistical Areas which contain the largest area of each LGA.

Appendix
Table 3.2: Local Government Areas in Regional Statistical Areas

Capital Region	Central West	Coffs Harbour - Grafton	Far West and Orana
Bega Valley	Bathurst Regional	Bellingen*	Bogan
Eurobodalla	Bland*	Clarence Valley	Bourke
Goulburn Mulwaree	Blayney	Coffs Harbour	Brewarrina
Hilltops	Cabonne*		Broken Hill
Queanbeyan-Palerang Regional	Cowra		Central Darling
Snowy Monaro Regional*	Forbes		Cobar
Upper Lachlan Shire	Lachlan*		Coonamble
Yass Valley	Lithgow		Dubbo Regional*
	Mid-Western Regional		Gilgandra
	Oberon*		Narromine
	Orange		Unincorporated Far West
	Parkes		Walgett
	Weddin		Warren
			Warrumbungle Shire*
Hunter Valley excluding Newcastle	Illawarra	Mid North Coast	Murray
Cessnock	Kiama*	Kempsey	Albury
Dungog	Shellharbour	Lord Howe Island	Balranald
Maitland*	Wollongong	Mid-Coast*	Berrigan
Muswellbrook		Nambucca	Edward River
Port Stephens*		Port Macquarie-Hastings	Federation*
Singleton*			Greater Hume Shire*
Upper Hunter Shire*			Hay
			Murray River
			Wentworth
New England and North West	Newcastle and Lake Macquarie	Richmond - Tweed	Riverina
Armidale Regional*	Lake Macquarie*	Ballina	Carrathool*
Glen Innes Severn	Newcastle	Byron	Coolamon
Gunnedah		Kyogle	Cootamundra-Gundagai
Gwydir		Lismore	Griffith
Inverell		Richmond Valley*	Junee
Liverpool Plains		Tweed	Leeton
Moree Plains			Lockhart*
Narrabri			Murrumbidgee*
Tamworth Regional			Narrandera
Tenterfield			Snowy Valleys*
Uralla			Temora
Walcha			Wagga Wagga
Southern Highlands and Shoalhaven			
Shoalhaven*			
Wingecarribee*			

* These LGAs span across two or more Statistical Areas.

These LGAs are listed under the NSW Regional Statistical Areas which contain the largest area of each LGA.

Appendix Table 3.3: Greater Sydney Statistical Area Map



Appendix Table 3.4: Regional NSW Statistical Areas Map



APPENDIX 4

OFFENCE CATEGORIES

Appendix BOCSAR offences mapped to NSW Police Force incident categories

4.1:

BOCSAR offence	NSW Police Force incident categories
Homicide	
Murder	Murder
Attempted murder	Murder – attempted Shoot with intent to murder
Murder accessory, conspiracy	Murder – conspiracy Murder – solicit
Manslaughter – not driving	Manslaughter
Assault	
	<i>Includes any of the following offences disaggregated by whether or not police have flagged the incident as domestic violence related:</i>
Domestic violence related	Actual bodily harm Assault common Grievous bodily harm (including malicious wounding) Shoot with intent other than to murder Spike drink/food
Non-domestic violence related	Actual bodily harm Assault common Grievous bodily harm (including malicious wounding) Shoot with intent other than to murder Spike drink/food
Assault Police	Assault Police officer
Sexual offences	
Sexual assault	Sexual assault – adult victim (16 years old and over) Sexual assault – child victim, reported when child Sexual assault – child victim, reported when adult
Sexual touching, sexual act and other sexual offences	Sexual act – adult victim (16 years old and over) Sexual act – child victim, reported when child Sexual act – child victim, reported when adult Sexual touching – adult victim (16 years old and over) Sexual touching – child victim, reported when child Sexual touching – child victim, reported when adult Act of indecency Aggravated act of indecency Bestiality Carnal knowledge Grooming/procuring Incest

BOCSAR offence	NSW Police Force incident categories
Sexual touching, sexual act and other sexual offences (<i>continued</i>)	Indecent communication Peep or pry Wilful and obscene exposure Other sexual offence Voyeurism/Film person
Abduction and kidnapping	Kidnapping/Abduction People trafficking
Robbery	
Robbery without a weapon	<i>Includes any of the following offences in which no weapon was recorded:</i> Demand money with menaces Robbery Robbery with aggravation Robbery with wounding Other robbery
Robbery with a firearm	<i>Includes any of the following offences in which a firearm was recorded as a weapon:</i> Armed robbery Demand money with menaces Robbery Robbery with aggravation Robbery with wounding Other robbery
Robbery with a weapon not a firearm	<i>Includes any of the following offences in which a non firearm weapon was recorded:</i> Armed robbery Demand money with menaces Robbery Robbery with aggravation Robbery with wounding Other robbery
Blackmail and extortion	Extortion/Blackmail
Intimidation, stalking and harassment	Bullying/harassment or intimidation Stalking (since 2017) Child approach (since 2017) Riot and affray Telecommunications offence (includes nuisance phone calls)

BOCSAR offence	NSW Police Force incident categories
	<p>Indecent Communication</p> <p>Threats against Police</p> <p>Violent disorder</p> <p>Unlawful assembly</p>
Other offences against the person	<p>Labour exploitation (includes sexual servitude)</p> <p>Malicious damage with intent to injure/endorse</p> <p>Negligent act cause grievous bodily harm</p> <p>Other offence against the person</p>
Theft	
Break and enter – dwelling	<p><i>Dwelling includes premises where people reside such as house, home unit, caravan, tent as well as any attachment such as garage, shed, yard and garden.</i></p> <p>Break/Enter and steal</p> <p>Break/Enter and commit other felony</p> <p>Break/Enter intent to steal</p> <p>Break/Enter intent to commit other felony</p>
Break and enter – non-dwelling	<p><i>Non-dwelling includes commercial and government premises.</i></p> <p>Break/Enter and steal</p> <p>Break/Enter and commit other felony</p> <p>Break/Enter intent to steal</p> <p>Break/Enter intent to commit other felony</p>
Receiving or handling stolen goods	<p>Receiving</p> <p>Goods in custody</p> <p>Possess property stolen outside NSW</p> <p>Deal with proceeds of crime</p> <p>Money Laundering</p>
Motor vehicle theft	<p>Theft of motor cars, motor cycles, and other vehicles / vessels</p> <p>Rebirthing vehicles / vessels</p> <p>Vehicle/Vessel Unique Identifier</p>
Steal from motor vehicle	Steal from motor vehicle
Steal from retail store	Steal from retail store
Steal from dwelling	<p>Steal from dwelling</p> <p>Other stealing <i>occurring in a residential dwelling</i></p>
Steal from person	Steal from person
Stock theft	Steal stock (Non-domestic animal)
Fraud	<p>Company/corporate offence</p> <p>Computer crime</p>

BOCSAR offence	NSW Police Force incident categories
Fraud (<i>continued</i>)	Copyright/Intellectual property/Trademark
	Corrupt commission/practices
	Corrupt payment (receive or pay)
	Counterfeit currency
	Deception offence
	Embezzlement
	Fail to pay
	Forgery (since 2017)
	Fraudulent misappropriation
	Larceny clerk/servant/bailee
	Make/use false instrument
	Misappropriate cheques/funds
	Possess false instrument
	Publish false misleading statement
	Receiving (fraud related)
	Scams - obtain funds (since 2017)
	Scams - selling (since 2017)
	Unauthorised access of funds (since 2017)
	Deal/supply false identity documents (since 2017)
	Deal/supply false information (since 2017)
	Equipment to make false identity documents (since 2017)
	Make false identity documents (since 2017)
	Possess false identity documents (since 2017)
	Possess identity information (since 2017)
Use false identity documents (since 2017)	
Other fraud	
Other theft	Steal from dwelling <i>occurring somewhere other than a residential or non-residential dwelling</i> (e.g. from hostels, motels, boarding houses etc)
	Steal domestic animal or bird
	Steal from marine vessel
	Steal vessel
	Other stealing <i>occurring somewhere other than a dwelling</i> (e.g. in outdoor/public places)
	Arson
Bushfire	
Structure	
Vehicle (e.g. aircraft/motor vehicle/train/vessel)	
Other commodity	
Malicious damage to property	Graffiti
	Malicious damage to property
	Public place – damage fountain/wall etc.

BOCSAR offence	NSW Police Force incident categories
	Public place – damage shrine/monument
Drug offences	
Possession and/or use of cocaine	Possess drug where drug type is cocaine Use or administer drug where drug type is cocaine Item/object found where drug type is cocaine
Possession and/or use of narcotics	Possess drug <i>where drug type is narcotics</i> Use or administer drug <i>where drug type is narcotics</i> Item/object found <i>where drug type is narcotics</i>
Possession and/or use of cannabis	Possess drug / plant <i>where drug type is cannabis</i> Use or administer drug <i>where drug type is cannabis</i> Item/object found <i>where drug type is cannabis</i>
Possession and/or use of amphetamines	Possess drug <i>where drug type is amphetamines</i> Use or administer drug <i>where drug type is amphetamines</i> Item/object found <i>where drug type is amphetamines</i>
Possession and/or use of ecstasy	Possess drug <i>where drug type is ecstasy</i> Use or administer drug <i>where drug type is ecstasy</i> Item/object found <i>where drug type is ecstasy</i>
Possession and/or use of other drugs	Possess drug <i>where drug type is not cocaine, narcotics, cannabis, amphetamines or ecstasy</i> Use or administer drug <i>where drug type is not cocaine, narcotics, cannabis, amphetamines or ecstasy</i> Item/object found <i>where drug type is not cocaine, narcotics, cannabis, amphetamines or ecstasy</i>
Dealing, trafficking in cocaine	Supply drug <i>where drug type is cocaine</i>
Dealing, trafficking in narcotics	Supply drug <i>where drug type is narcotics</i>
Dealing, trafficking in cannabis	Supply drug/plant <i>where drug/plant type is cannabis</i>
Dealing, trafficking in amphetamines	Supply drug <i>where drug type is amphetamines</i>
Dealing, trafficking in ecstasy	Supply drug <i>where drug type is ecstasy</i>
Dealing, trafficking in other drugs	Supply drug/plant <i>where drug/plant type is not cocaine, narcotics, cannabis, amphetamines or ecstasy</i>
Cultivating cannabis	Cultivation
Manufacture drug	Manufacture drug
Importing drugs	Import drug/plant
Other drug offences	Forge and/or utter prescription Possess drug utensil Other drug detection/seizure offence
Prohibited and regulated weapons	Bomb hoax or threat

BOCSAR offence	NSW Police Force incident categories
offences	Discharge firearm into premises Licence offence Firearms dealer offence Firearms not ensure safekeeping Improper storage of explosives Person search - Item/object found <i>where item/object is a weapon</i> Possess explosive/dangerous article Possess prohibited weapon/article Possess shortened firearm Possess whilst unlicensed Sell prohibited weapon/article Shorten firearm
Prohibited and regulated weapons offences (continued)	Trespass with firearm Unlawful handling/access/supply of explosives Unlawfully discharge firearm Use firearm under influence Use prohibited weapon/article Other explosives offence Other firearm licencing offence Other firearm offence Other prohibited weapon/article offence
Disorderly conduct	
Trespass	Trespass Remain inclosed lands
Offensive conduct	Offensive behaviour
Offensive language	Offensive language
Criminal intent	Armed with intent Charge with intent Disguised with intent Enter land with intent Intent to repeat indictable offence Instruments of crime Possess implements
Betting and gaming offences	Conduct/play illegal betting Conduct/play illegal game Own/manage premises – betting Own/manage premises – gaming Other gaming offence
Liquor offences	Consume alcohol in alcohol-free zone Consume/possess alcohol in public by minor

BOCSAR offence	NSW Police Force incident categories
	Licensing legislation offence: <ul style="list-style-type: none"> – Offence by licensee/employee/secretary – Offence by minor – Offence by customer (not minor) – Supply liquor to juvenile – Offence against registered clubs legislation
Pornography offences	Possess/disseminate child pornography Possess/publish indecent material
Prostitution offences	Soliciting/prostitution in public Procure Prostitute (Including child prostitute) Prostitution – premises Prostitution – live off earnings Child prostitution
Prostitution offences (<i>continued</i>)	Other vice offence
Against justice procedures	
Escape Custody	Escapee – Corrective Services custody Escapee – Department of Community Services custody Escapee – Police custody Escapee – Other custody
Breach Apprehended Violence Order	Breach Apprehended Violence Order – domestic Breach Apprehended Violence Order – personal
Breach bail conditions	Breach bail conditions Breach control order
Fail to appear	Fail to appear
Resist or hinder officer	Refuse direction Refuse direction continue intoxication and disorder Refuse direction intoxicated person Refuse to be searched Refuse to produce object Resist/hinder officer
Other offences against justice procedures	Other judicial offence Fail to comply Contravene Child Protection Prohibition Order (CPPO)
Transport regulatory offences	<i>Transport offence (includes offences on the rail network such as travelling without a valid ticket, smoking, drinking or using offensive language on a train or railway land)</i> Buffer riding
Other offences	Animals - Dog offences

BOCSAR offence

NSW Police Force incident categories

	Cyber Breach/Attack
	False 000 call
	Family law offence
	Immigration/customs offence
	Obstruction
	Offence against transport service
	Breach COVID 19 direction
	Other street offences (carry cutting weapon, offensive implement)
	Public mischief
	Terrorism offences (e.g. associating with terrorist organisations, financing terrorism etc.)
	Other miscellaneous offences
	Offences under various acts:
Other offences (continued)	<i>Animals - Prevention Of Cruelty Acts</i>
	<i>Bush Fire Act</i>
	<i>Child Protection Act</i>
	<i>Local Government Act</i>
	<i>Marine/Waterway Act</i>
	<i>Pawnbrokers Act</i>
	<i>Postal Services Act</i>
	<i>Public Health Act</i>
	<i>Security Industry Act</i>
	<i>Sydney Harbour Bridge Act</i>
	<i>Tattoo Parlours Act</i>
