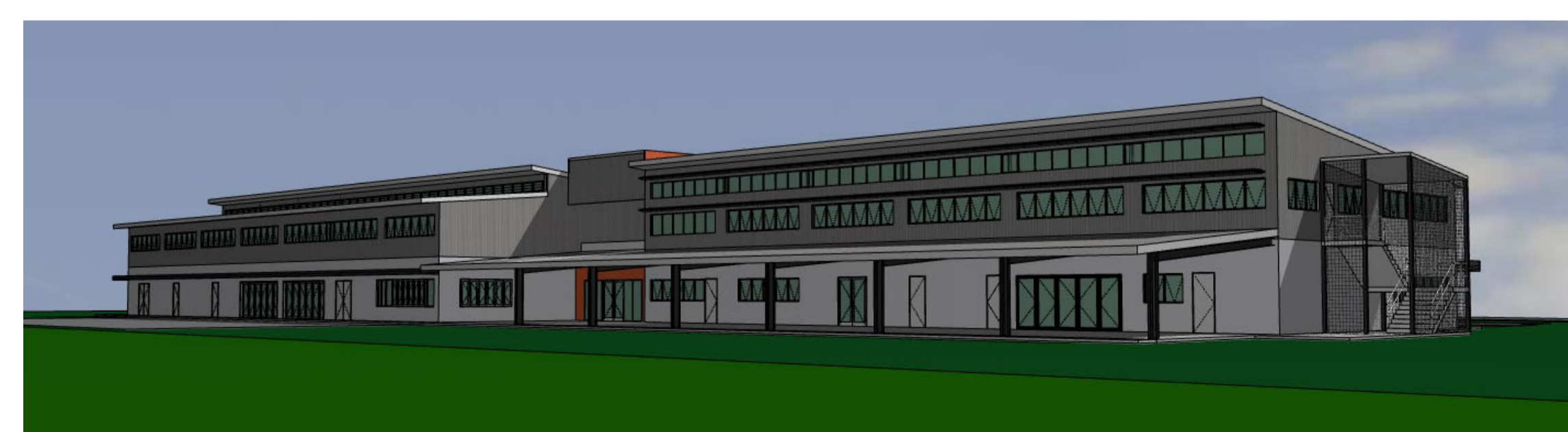


Contents

- DACC 01 Cover Page
- DACC 02 Site Plan - Proposed
- DACC 03 Floor Plans - Proposed
- DACC 04 Site Elevations 1 & 2
- DACC 05 Site Elevations 3 & 4
- DACC 06 Learning Centre - Ground Floor Plan
- DACC 07 Learning Centre - First Floor Plan
- DACC 08 Learning Centre - Elevations 1 & 2
- DACC 09 Learning Centre - Elevations 3 & 4
- DACC 10 Learning Centre - Sections AA & BB
- DACC 11 Gymnasium - Ground Floor Plan
- DACC 12 Gymnasium - First Floor Plan
- DACC 13 Gymnasium - Elevations 1 & 2
- DACC 14 Gymnasium - Elevations 3 & 4
- DACC 15 Gymnasium - Sections AA & BB
- DACC 16 Perspective Images
- DACC 17 Landscape Plan
- DACC 18 Site Sections



NOT FOR CONSTRUCTION

Date	Issue	Amendment
25/01/24	S	ISSUED FOR DA APPROVAL

Date	Issue	Amendment
09/11/23	M	Issued for comment
09/11/23	N	Issued for comment
19/12/23	O	Issued for comment
21/12/23	P	Issued for final comment
24/12/23	Q	Awning added to additional drawings
18/01/24	R	Issued for comment

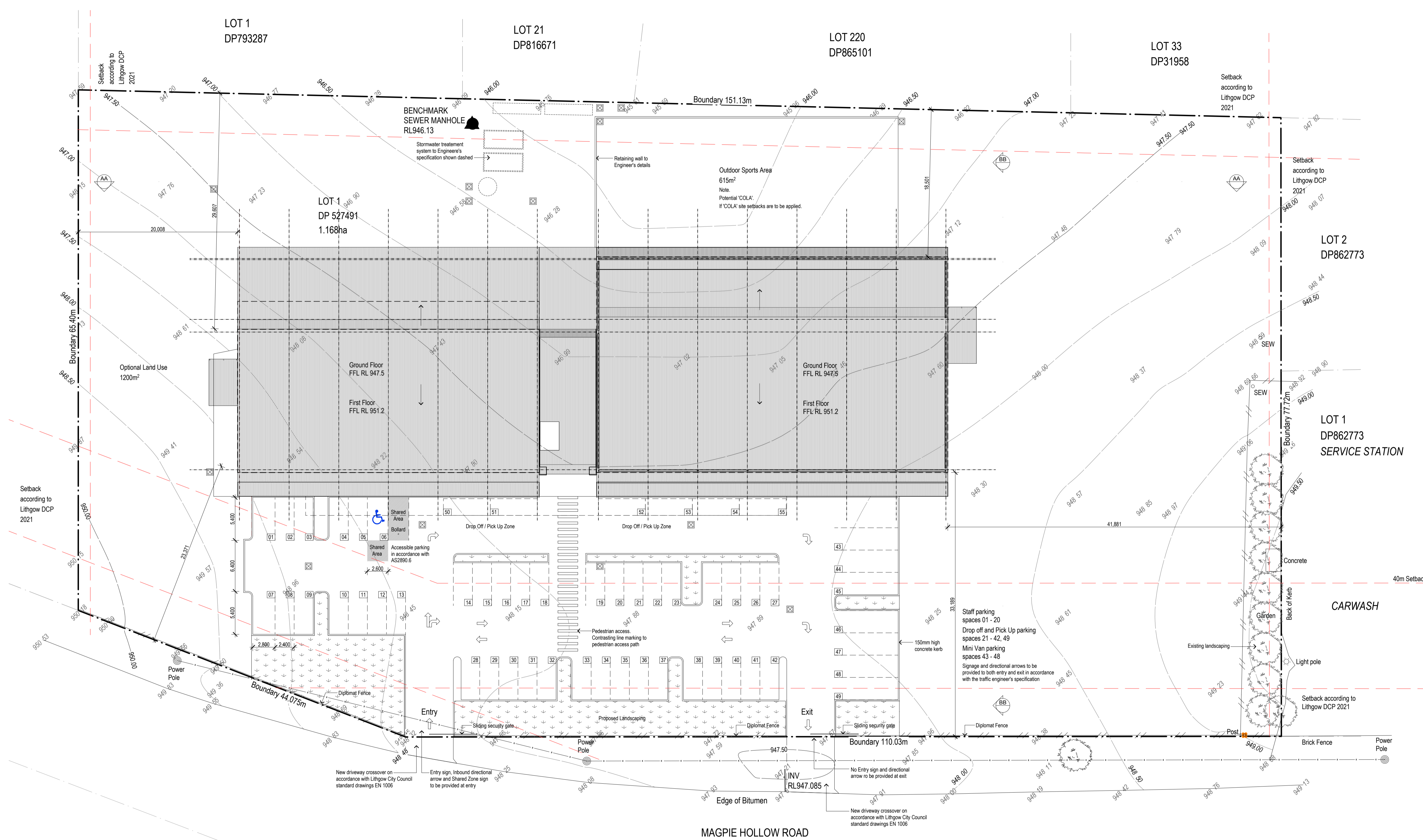
Date	Issue	Amendment
14/09/23	G	Survey details incorporated
29/09/23	H	Issued for comment
06/10/23	I	Issued for comment
09/10/23	J	Issued for comment
20/10/23	K	Issued for comment
25/10/23	L	Issued for comment

Date	Issue	Amendment
13/04/23	A	Issued for comment
13/04/23	B	Issued for comment
08/05/23	C	Issued for comment
13/07/23	D	Issued for comment
24/08/23	E	Issued for comment
05/09/23	F	Issued for comment



Legend

A	Aluminium
B	Basin
BDRY	Boundary
BFB	Bagged & Painted Brickwork
BV	Brick Veneer
CL	Ceiling Level
CONC	Concrete
CP	Concrete Paver
CPT	Carpet
CRS	Corrugated Roof Sheetting
CS	Cavity Sliding Door
CT	Ceramic Tile
DH	Double Hung
DP	Downpipe
EMB	Electrical Meterboard
ENS	Ensuite
FB	Face Brick
FC	Fibre Cement
FFL	Finished Floor Level
F	Fixed Glass
FW	Floor Waste
GM	Gas Meter
HC	Hollow Core
HWS	Hot Water Service
LDRY	Laundry
MH	Manhole
P	Pantry
PB	Plasterboard
O	Fixed Panel
OG	Obscure Glass
REF	Refrigerator
RH	Ranghood Above
RL	Reduced Level
SC	Solid Core
SD	Sliding Door
SHR	Shower
SS	Stainless Steel Sink
SV	Stone Veneer
T	Tub
TC	Texture Coated Hebel
TF	Timber Floor Finish
TYP	Typical
UBO	Under Bench Oven
VL	Vinyl Floor Finish
WB	Weatherboards
WC	Water Closet
W	Water Meter
WM	Washing Machine
X	Sliding panel
[Symbol]	Proposed stormwater pit to Engineer's details



Compartment Schedule

Compartment Schedule	Area	Volume
Classrooms	1364.4 m ²	6003.36 m ³
Gym	1397.5 m ²	8505.2 m ³
Total Building (Excl. Link)	2761.9 m²	14508.56 m³
Link	230.4 m ²	1013.76 m ³

BRETT MOULDS DESIGN & DRAFTING
02 6332 5885
0424 156 450
BRETT@BMD.COM.AU
12 MAXWELL DRIVE, EGLINTON NSW 2795

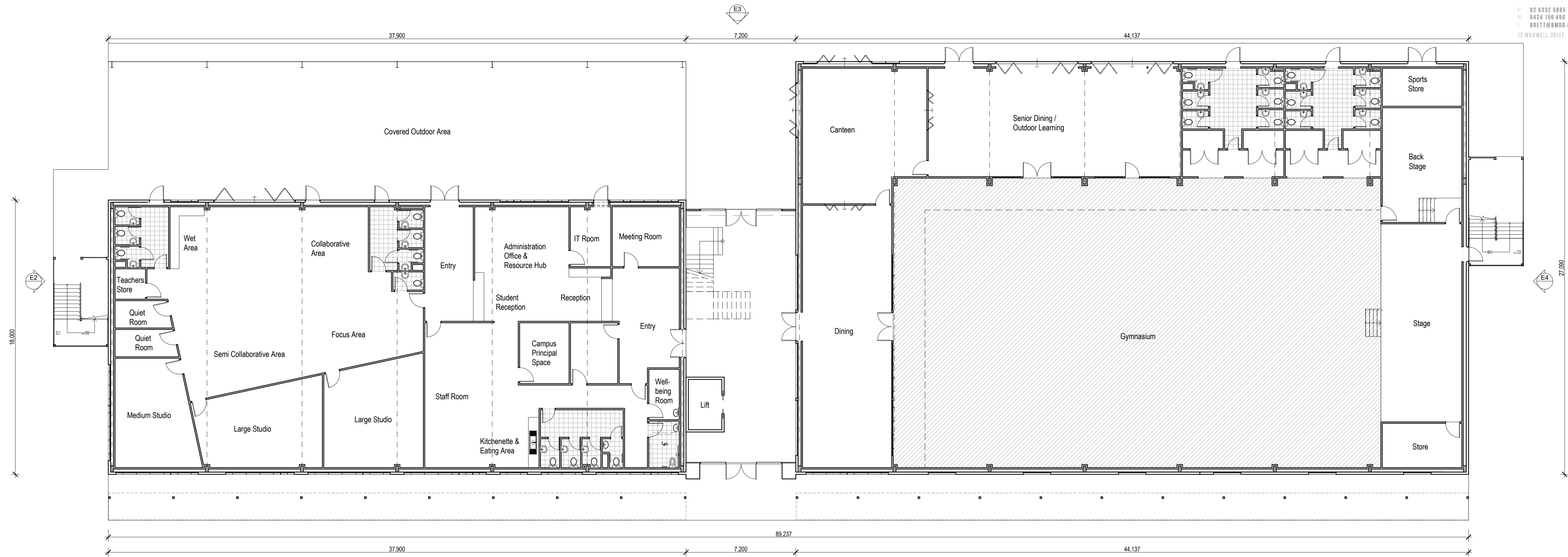


Date	Issue	Amendment	Date	Issue	Amendment	Date	Issue	Amendment
25/01/24	S	ISSUED FOR DA APPROVAL	09/11/23	M	Survey details incorporated	14/09/23	G	Issued for comment
			09/11/23	N	Issued for comment	29/09/23	H	Issued for comment
			19/12/23	O	Issued for comment	06/10/23	I	Issued for comment
			21/12/23	P	Issued for final comment	09/10/23	J	Issued for comment
			24/12/23	Q	Awning added to additional drawings	20/10/23	K	Issued for comment
			18/01/24	R	Issued for comment	25/10/23	L	Issued for comment

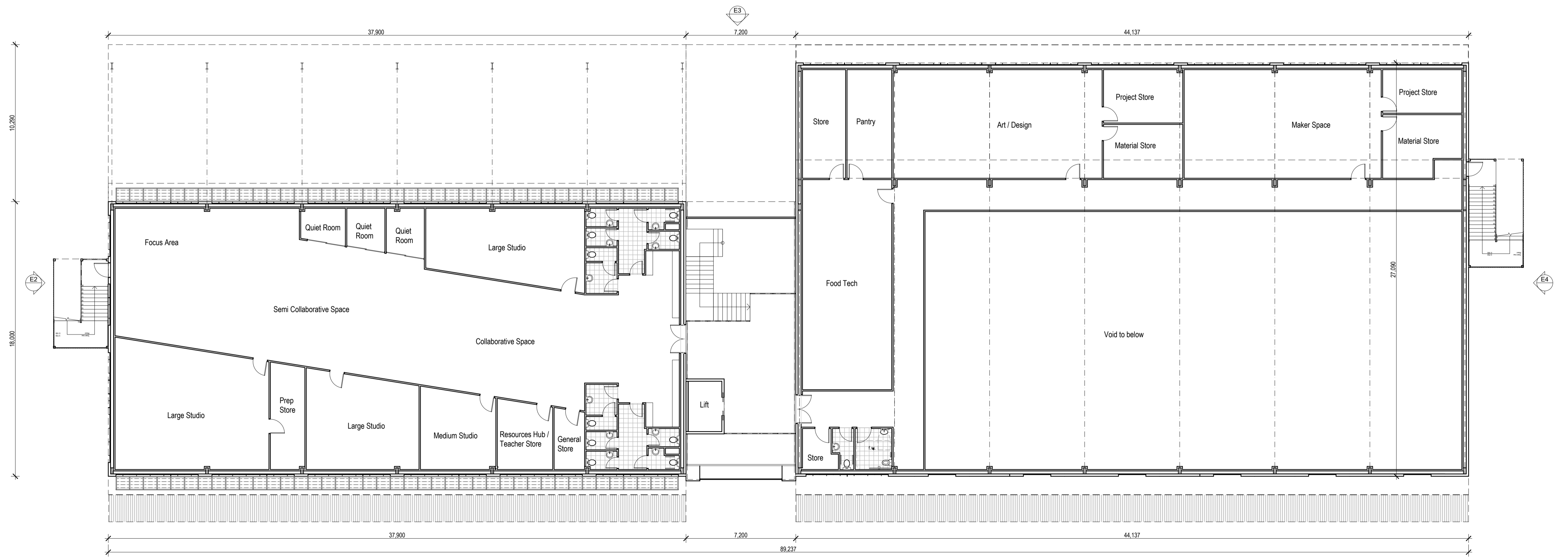
Date	Issue	Amendment
13/04/23	A	Issued for comment
13/04/23	B	Issued for comment
08/06/23	C	Issued for comment
13/07/23	D	Issued for comment
24/08/23	E	Issued for comment
05/09/23	F	Issued for comment

Proposed School
DEZIGN
Lot 1 Magpie Hollow Road South Bowenfels

Site Plan - Proposed
DACC 02
Issue: s
Scale: 1:250 @ A1
Date: 25/01/24
Project: BMD222389



Ground Floor - Proposed
Scale 1:150



First Floor - Proposed

Compartment Schedule	Area	Volume
Classrooms	1364.4 m ²	6003.36 m ³
Gym	1397.5 m ²	8505.2 m ³
Total Building (Excl. Link)	2761.9 m²	14508.56 m³
Link	230.4 m ²	1013.76 m ³

Date	Issue	Amendment
25/01/24	S	ISSUED FOR DA APPROVAL

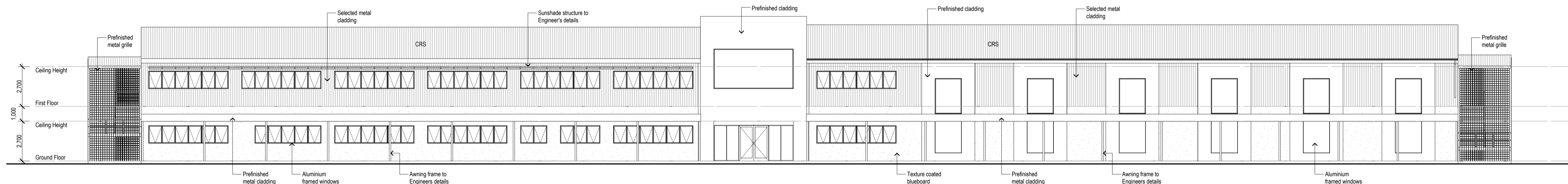
Date	Issue	Amendment
09/11/23	M	Survey details incorporated
09/11/23	N	Issued for comment
19/12/23	O	Issued for comment
21/12/23	P	Issued for final comment
24/12/23	Q	Awning added to additional drawings
18/01/24	R	Issued for comment

Date	Issue	Amendment
14/09/23	G	Survey details incorporated
29/09/23	H	Issued for comment
06/10/23	I	Issued for comment
09/10/23	J	Issued for comment
20/10/23	K	Issued for comment
25/10/23	L	Issued for comment

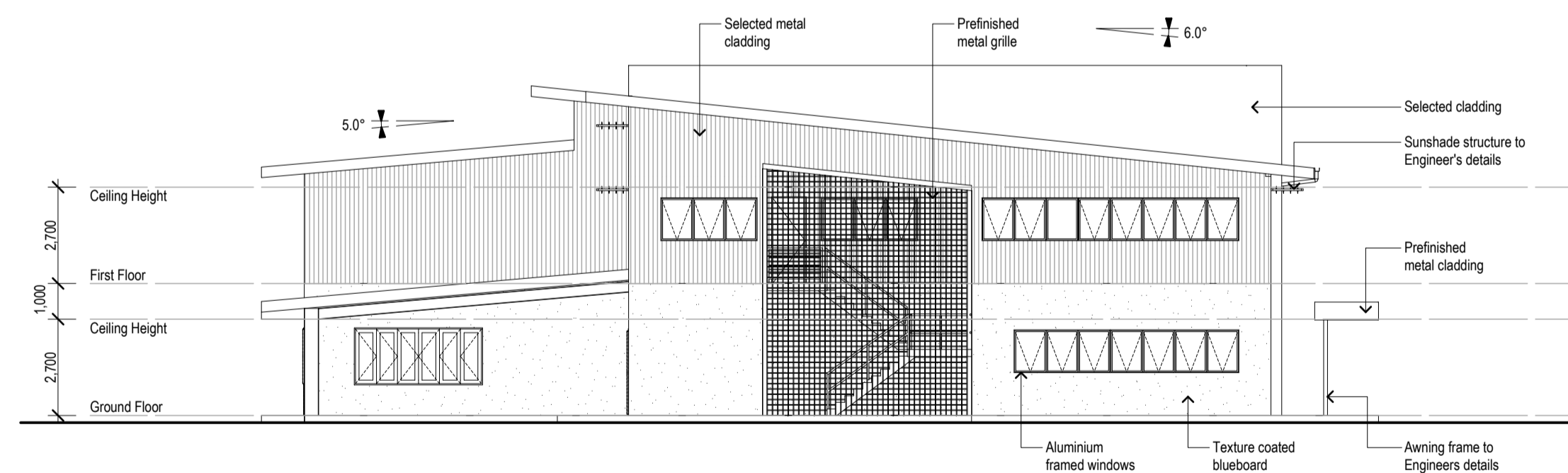
NOT FOR CONSTRUCTION

Date	Issue	Amendment
13/04/23	A	Issued for comment
13/04/23	B	Issued for comment
08/05/23	C	Issued for comment
13/07/23	D	Issued for comment
24/08/23	E	Issued for comment
05/09/23	F	Issued for comment

Proposed School
DEZIGN
Lot 1 Magpie Hollow Road South Bowenfels



Site - Elevation 1
 Scale 1:150



Site - Elevation 2
 Scale 1:150

NOT FOR CONSTRUCTION

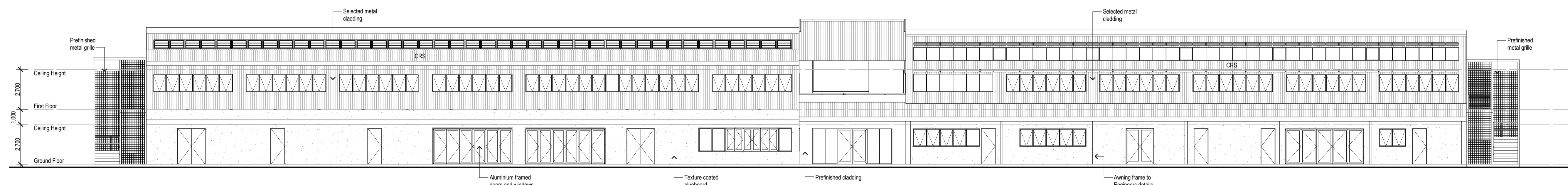
Date	Issue	Amendment
25/01/24	S	ISSUED FOR DA APPROVAL

Date	Issue	Amendment
09/11/23	M	Issued for comment
09/11/23	N	Issued for comment
19/12/23	O	Issued for comment
21/12/23	P	Issued for final comment
24/12/23	Q	Awning added to additional drawings
18/01/24	R	Issued for comment

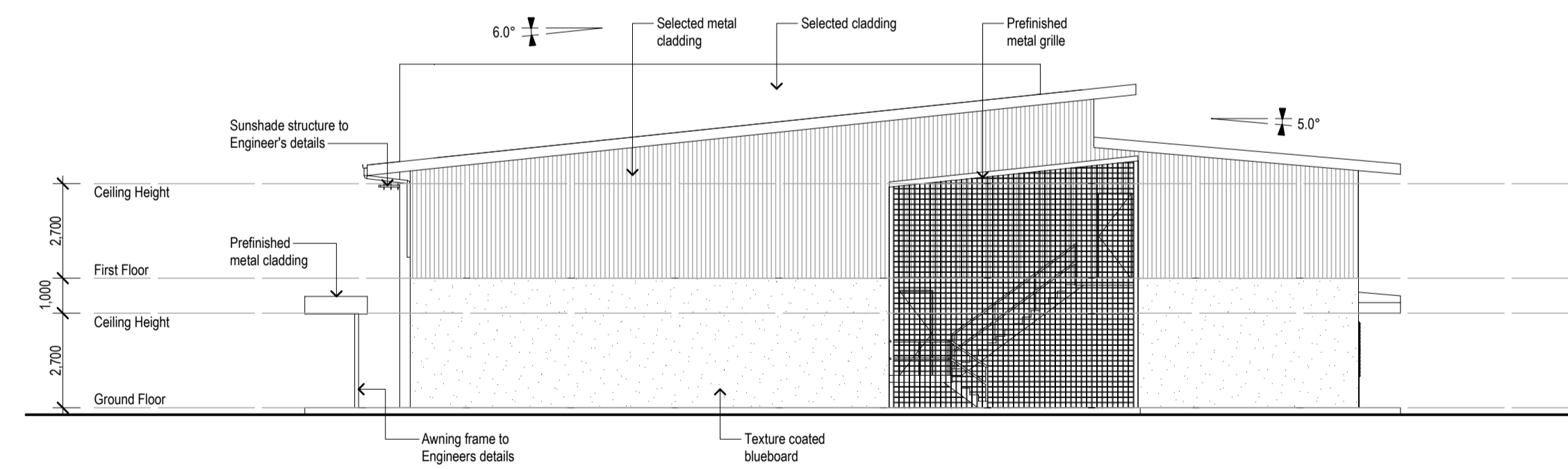
Date	Issue	Amendment
14/09/23	G	Survey details incorporated
29/09/23	H	Issued for comment
06/10/23	I	Issued for comment
09/10/23	J	Issued for comment
20/10/23	K	Issued for comment
25/10/23	L	Issued for comment

Date	Issue	Amendment
13/04/23	A	Issued for comment
13/04/23	B	Issued for comment
08/05/23	C	Issued for comment
13/07/23	D	Issued for comment
24/08/23	E	Issued for comment
05/09/23	F	Issued for comment





Site - Elevation 3
Scale 1:150



Site - Elevation 4
Scale 1:150

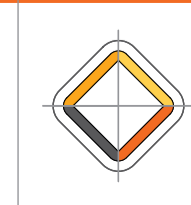
NOT FOR CONSTRUCTION

Date	Issue	Amendment
25/01/24	S	ISSUED FOR DA APPROVAL

Date	Issue	Amendment
09/11/23	M	Issued for comment
09/11/23	N	Issued for comment
19/12/23	O	Issued for comment
21/12/23	P	Issued for final comment
24/12/23	Q	Awning added to additional drawings
18/01/24	R	Issued for comment

Date	Issue	Amendment
14/09/23	G	Survey details incorporated
29/09/23	H	Issued for comment
06/10/23	I	Issued for comment
09/10/23	J	Issued for comment
20/10/23	K	Issued for comment
25/10/23	L	Issued for comment

Date	Issue	Amendment
13/04/23	A	Issued for comment
13/04/23	B	Issued for comment
08/05/23	C	Issued for comment
13/07/23	D	Issued for comment
24/08/23	E	Issued for comment
05/09/23	F	Issued for comment





Notes:
1. Builder to confirm coordination of architectural and structural documentation prior to construction.
2. All dimensions are to be verified on site by contractor prior to commencement of any works.
3. All discrepancies are to be referred to designer for action.

- Legend**
- A Aluminium
 - B Basin
 - BDRY Boundary
 - BPB Bagged & Painted Brickwork
 - BV Brick Veneer
 - CL Ceiling Level
 - CONC Concrete
 - CP Concrete Paver
 - CPT Carpet
 - CRS Corrugated Roof Sheetting
 - CS Cavity Sliding Door
 - CT Ceramic Tile
 - DH Double Hung
 - DP Downpipe
 - EMB Electrical Meterboard
 - ENS Ensuite
 - FB Face Brick
 - FC Fibre Cement
 - FFL Finished Floor Level
 - F Fixed Glass
 - FW Floor Waste
 - GM Gas Meter
 - HC Hollow Core
 - HWS Hot Water Service
 - LDRY Laundry
 - MH Manhole
 - P Pantry
 - PB Plasterboard
 - O Fixed Panel
 - OG Obscure Glass
 - REF Refrigerator
 - RH Rangehood Above
 - RL Reduced Level
 - SC Solid Core
 - SD Sliding Door
 - SHR Shower
 - SS Stainless Steel Sink
 - SV Stone Veneer
 - T Tub
 - TC Texture Coated Hebel
 - TF Timber Floor Finish
 - TYP Typical
 - UBO Under Bench Oven
 - VL Vinyl Floor Finish
 - WB Weatherboards
 - WC Water Closet
 - W Water Meter
 - WM Washing Machine
 - X Sliding panel



Compartment Schedule	Area	Volume
Classrooms	1364.4 m ²	6003.36 m ³
Gym	1397.5 m ²	9505.2 m ³
Total Building (Excl. Link)	2761.9 m²	14508.56 m³
Link	230.4 m ²	1013.76 m ³

BRETT MOULDS
DESIGN & DRAFTING
P 02 6332 5885
M 0424 156 450
E BRETT@BMD.COM.AU
12 MAXWELL DRIVE, EGLINTON NSW 2795



Date	Issue	Amendment	Date	Issue	Amendment
25/01/24	S	ISSUED FOR DA APPROVAL	09/11/23	M	Survey details incorporated
			09/11/23	N	Issued for comment
			19/12/23	O	Issued for comment
			21/12/23	P	Issued for final comment
			24/12/23	Q	Awning added to additional drawings
			18/01/24	R	Issued for comment

Date	Issue	Amendment	Date	Issue	Amendment
14/09/23	G	Survey details incorporated	13/04/23	A	Issued for comment
29/09/23	H	Issued for comment	13/04/23	B	Issued for comment
06/10/23	I	Issued for comment	08/06/23	C	Issued for comment
09/10/23	J	Issued for comment	13/07/23	D	Issued for comment
20/10/23	K	Issued for comment	24/08/23	E	Issued for comment
25/10/23	L	Issued for comment	05/09/23	F	Issued for comment

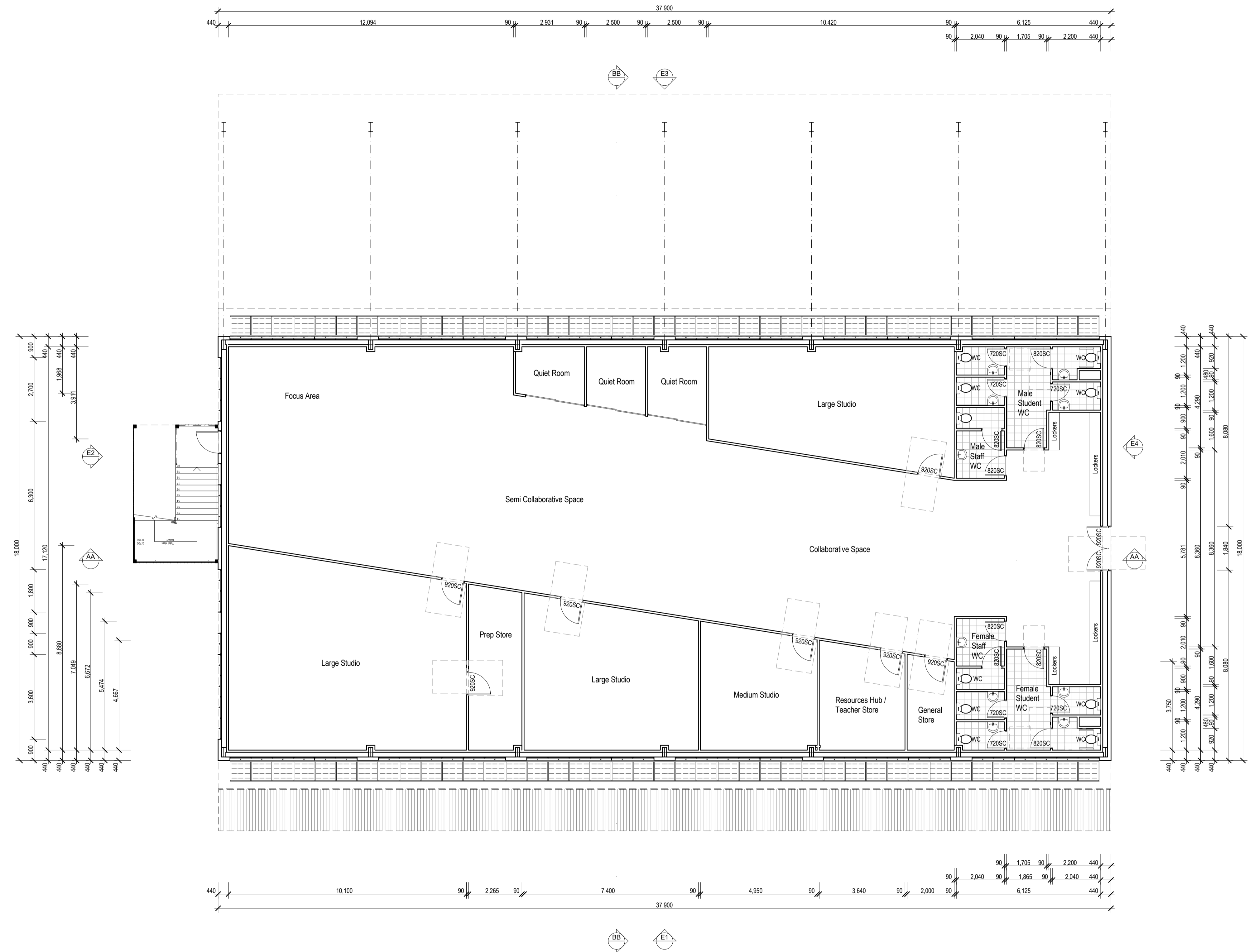
NOT FOR CONSTRUCTION

Proposed School
DEZIGN
Lot 1 Magpie Hollow Road South Bowenfels

Learning Centre - Ground Floor Plan
DACC 06
Issue: S
Scale: 1:100 @ A1
Date: 25/01/24
Project: BMD222389



- Legend**
- A Aluminium
 - B Basin
 - BDRY Boundary
 - BFB Bagged & Painted Brickwork
 - BV Brick Veneer
 - CL Ceiling Level
 - CONC Concrete
 - CP Concrete Paver
 - CPT Carpet
 - CRS Corrugated Roof Sheetting
 - CS Cavity Sliding Door
 - CT Ceramic Tile
 - DH Double Hung
 - DP Downpipe
 - EMB Electrical Meterboard
 - ENS Ensuite
 - FB Face Brick
 - FC Fibre Cement
 - FFL Finished Floor Level
 - F Fixed Glass
 - FW Floor Waste
 - GM Gas Meter
 - HC Hollow Core
 - HWS Hot Water Service
 - LDRY Laundry
 - MH Manhole
 - P Pantry
 - PB Plasterboard
 - O Fixed Panel
 - OG Obscure Glass
 - REF Refrigerator
 - RH Rangehood Above
 - RL Reduced Level
 - SC Solid Core
 - SD Sliding Door
 - SHR Shower
 - SS Stainless Steel Sink
 - SV Stone Veneer
 - T Tub
 - TC Texture Coated Hebel
 - TF Timber Floor Finish
 - TYP Typical
 - UBO Under Bench Oven
 - VL Vinyl Floor Finish
 - WB Weatherboards
 - WC Water Closet
 - W Water Meter
 - WM Washing Machine
 - X Sliding panel



Compartment Schedule	Area	Volume
Classrooms	1364.4 m ²	6003.36 m ³
Gym	1397.5 m ²	8505.2 m ³
Total Building (Excl. Link)	2761.9 m²	14508.56 m³
Link	230.4 m ²	1013.76 m ³

BRETT MOULDS
DESIGN & DRAFTING
P 02 6332 5885
M 0424 156 450
E BRETT@BMD.COM.AU
12 MAXWELL DRIVE, EGLINTON NSW 2795



Date	Issue	Amendment
25/01/24	S	ISSUED FOR DA APPROVAL

Date	Issue	Amendment
09/11/23	M	Issued for comment
09/11/23	N	Issued for comment
19/12/23	O	Issued for comment
21/12/23	P	Issued for final comment
24/12/23	Q	Awning added to additional drawings
18/01/24	R	Issued for comment

Date	Issue	Amendment
14/09/23	G	Survey details incorporated
29/09/23	H	Issued for comment
06/10/23	I	Issued for comment
09/10/23	J	Issued for comment
20/10/23	K	Issued for comment
25/10/23	L	Issued for comment

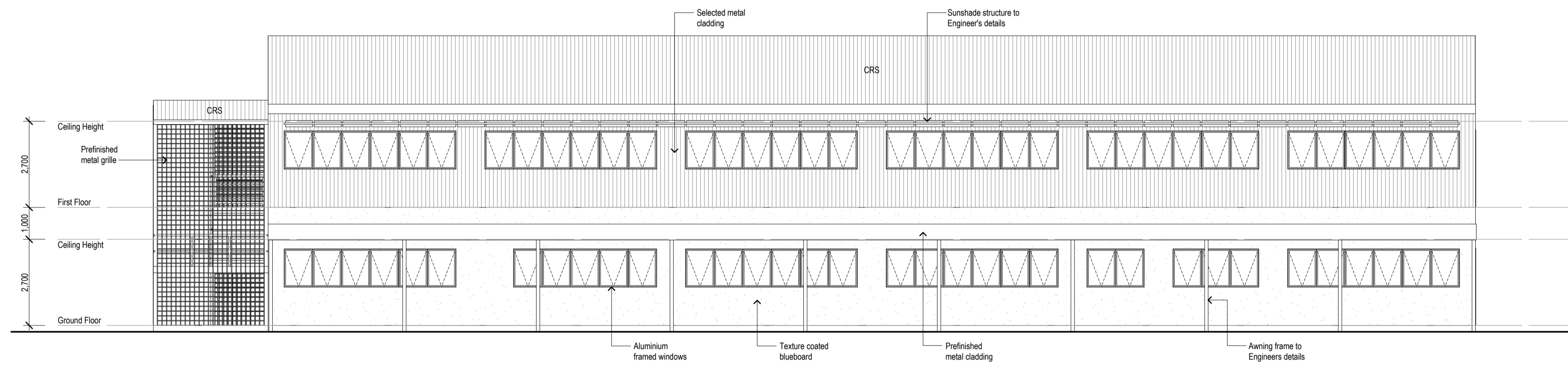
Date	Issue	Amendment
13/04/23	A	Issued for comment
13/04/23	B	Issued for comment
08/05/23	C	Issued for comment
13/07/23	D	Issued for comment
24/08/23	E	Issued for comment
05/09/23	F	Issued for comment

Proposed School
DEZIGN
Lot 1 Magpie Hollow Road South Bowenfels

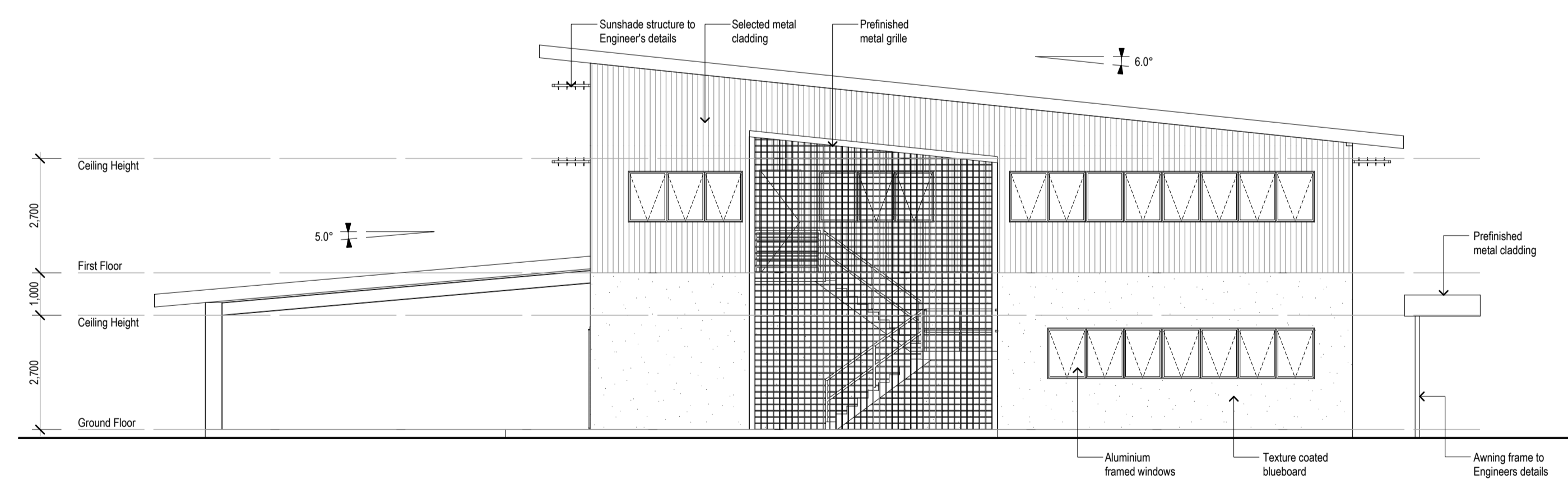
Learning Centre - First Floor Plan
DACC 07
Issue: S
Scale: 1:100 @ A1
Date: 25/01/24
Project: BMD222389



- A Aluminium
- B Basin
- BDRY Boundary
- BFB Bagged & Painted Brickwork
- BV Brick Veneer
- CL Ceiling Level
- CONC Concrete
- CP Concrete Paver
- CPT Carpet
- CRS Corrugated Roof Sheetting
- CS Cavity Sliding Door
- CT Ceramic Tile
- DH Double Hung
- DP Downpipe
- EMB Electrical Meterboard
- ENS Ensuite
- FB Face Brick
- FC Fibre Cement
- FFL Finished Floor Level
- F Fixed Glass
- FW Floor Waste
- GM Gas Meter
- HC Hollow Core
- HWS Hot Water Service
- LDRY Laundry
- MH Manhole
- P Pantry
- PB Plasterboard
- O Fixed Panel
- OG Obscure Glass
- REF Refrigerator
- RH Rangehood Above
- RL Reduced Level
- SC Solid Core
- SD Sliding Door
- SHR Shower
- SS Stainless Steel Sink
- SV Stone Veneer
- T Tub
- TC Texture Coated Hebel
- TF Timber Floor Finish
- TYP Typical
- UBO Under Bench Oven
- VL Vinyl Floor Finish
- WB Weatherboards
- WC Water Closet
- W Water Meter
- WM Washing Machine
- X Sliding panel



Learning Centre - Elevation 1
Scale 1:100



Learning Centre - Elevation 2
Scale 1:100

NOT FOR CONSTRUCTION

Date	Issue	Amendment
25/01/24	S	ISSUED FOR DA APPROVAL

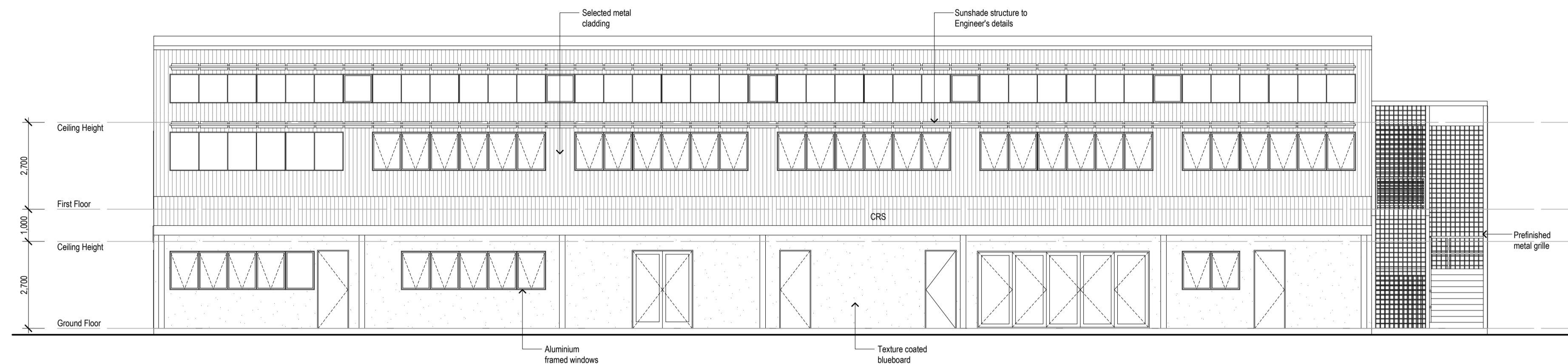
Date	Issue	Amendment
09/11/23	M	Issued for comment
09/11/23	N	Issued for comment
19/12/23	O	Issued for comment
21/12/23	P	Issued for final comment
24/12/23	Q	Awning added to additional drawings
18/01/24	R	Issued for comment

Date	Issue	Amendment
14/09/23	G	Survey details incorporated
29/09/23	H	Issued for comment
06/10/23	I	Issued for comment
09/10/23	J	Issued for comment
20/10/23	K	Issued for comment
25/10/23	L	Issued for comment

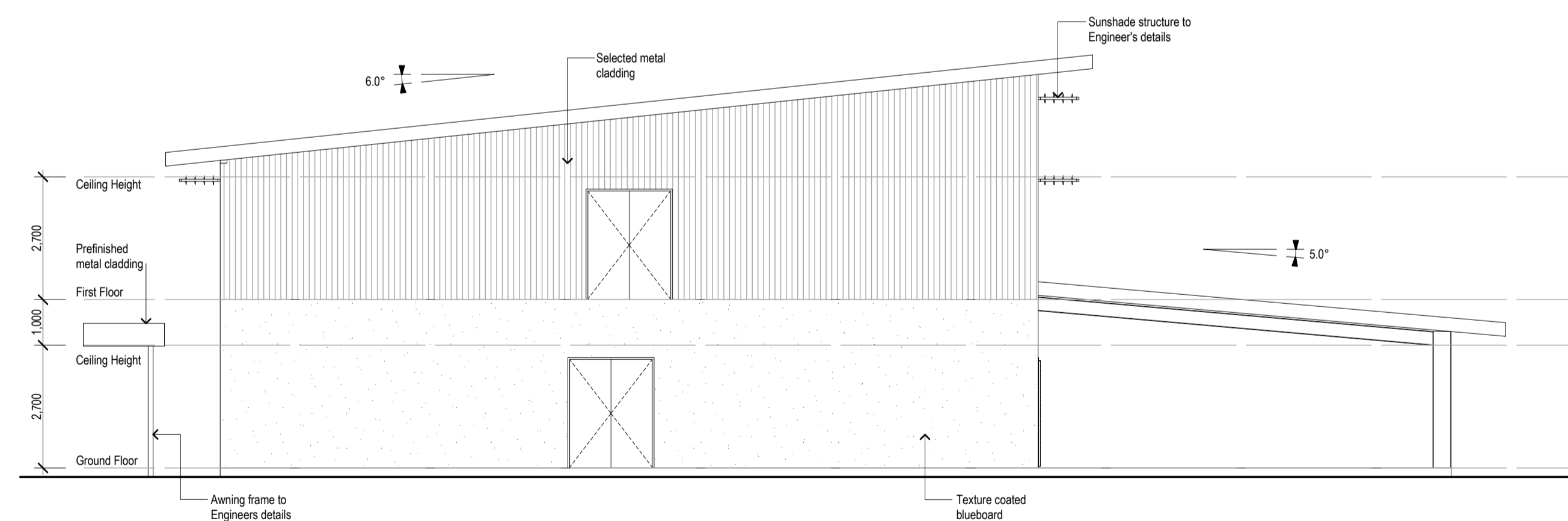
Date	Issue	Amendment
13/04/23	A	Issued for comment
13/04/23	B	Issued for comment
08/05/23	C	Issued for comment
13/07/23	D	Issued for comment
24/08/23	E	Issued for comment
05/09/23	F	Issued for comment



- Legend**
- A Aluminium
 - B Basin
 - BDRY Boundary
 - BFB Bagged & Painted Brickwork
 - BV Brick Veneer
 - CL Ceiling Level
 - CONC Concrete
 - CP Concrete Paver
 - CPT Carpet
 - CRS Corrugated Roof Sheetting
 - CS Cavity Sliding Door
 - CT Ceramic Tile
 - DH Double Hung
 - DP Downpipe
 - EMB Electrical Meterboard
 - ENS Ensuite
 - FB Face Brick
 - FC Fibre Cement
 - FFL Finished Floor Level
 - F Fixed Glass
 - FW Floor Waste
 - GM Gas Meter
 - HC Hollow Core
 - HWS Hot Water Service
 - LDRY Laundry
 - MH Manhole
 - P Pantry
 - PB Plasterboard
 - O Fixed Panel
 - OG Obscure Glass
 - REF Refrigerator
 - RH Rangehood Above
 - RL Reduced Level
 - SC Solid Core
 - SD Sliding Door
 - SHR Shower
 - SS Stainless Steel Sink
 - SV Stone Veneer
 - T Tub
 - TC Texture Coated Hebel
 - TF Timber Floor Finish
 - TYP Typical
 - UBO Under Bench Oven
 - VL Vinyl Floor Finish
 - WB Weatherboards
 - WC Water Closet
 - W Water Meter
 - WM Washing Machine
 - X Sliding panel



Learning Centre - Elevation 3
Scale 1:100



Learning Centre - Elevation 4
Scale 1:100

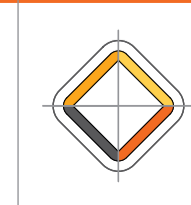
NOT FOR CONSTRUCTION

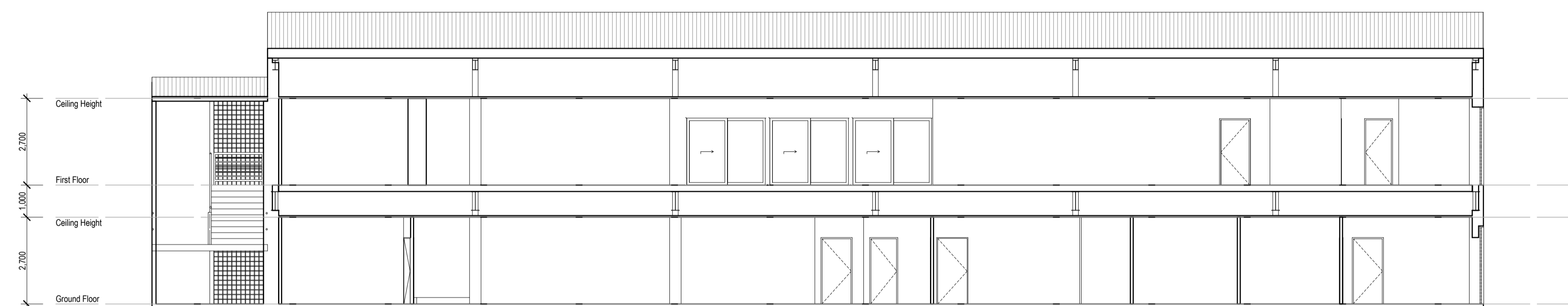
Date	Issue	Amendment
25/01/24	S	ISSUED FOR DA APPROVAL

Date	Issue	Amendment
09/11/23	M	Survey details incorporated
09/11/23	N	Issued for comment
19/12/23	O	Issued for comment
21/12/23	P	Issued for final comment
24/12/23	Q	Awning added to additional drawings
18/01/24	R	Issued for comment

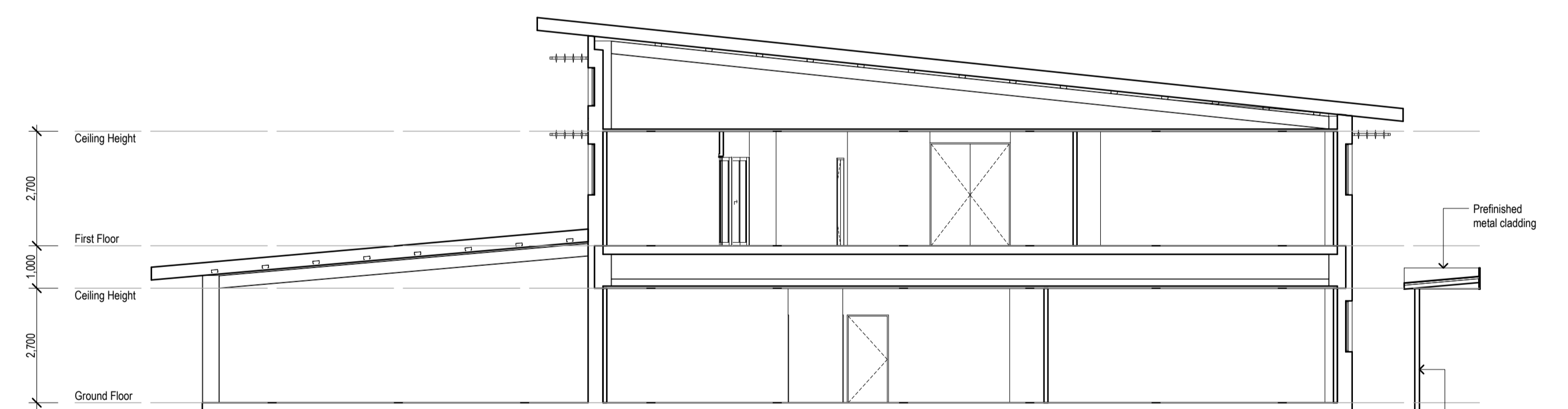
Date	Issue	Amendment
14/09/23	G	Survey details incorporated
29/09/23	H	Issued for comment
06/10/23	I	Issued for comment
09/10/23	J	Issued for comment
20/10/23	K	Issued for comment
25/10/23	L	Issued for comment

Date	Issue	Amendment
13/04/23	A	Issued for comment
13/04/23	B	Issued for comment
08/05/23	C	Issued for comment
13/07/23	D	Issued for comment
24/08/23	E	Issued for comment
05/09/23	F	Issued for comment





Learning Centre - Section AA
Scale 1:100



Learning Centre - Section BB
Scale 1:100

NOT FOR CONSTRUCTION

Date	Issue	Amendment	Date	Issue	Amendment	Date	Issue	Amendment
25/01/24	S	ISSUED FOR DA APPROVAL	09/11/23	M		14/09/23	G	Survey details incorporated
			09/11/23	N	Issued for comment	29/09/23	H	Issued for comment
			19/12/23	O	Issued for comment	06/10/23	I	Issued for comment
			21/12/23	P	Issued for final comment	09/10/23	J	Issued for comment
			24/12/23	Q	Issued for final comment	20/10/23	K	Issued for comment
			18/01/24	R	Issued for final comment	25/10/23	L	Issued for comment

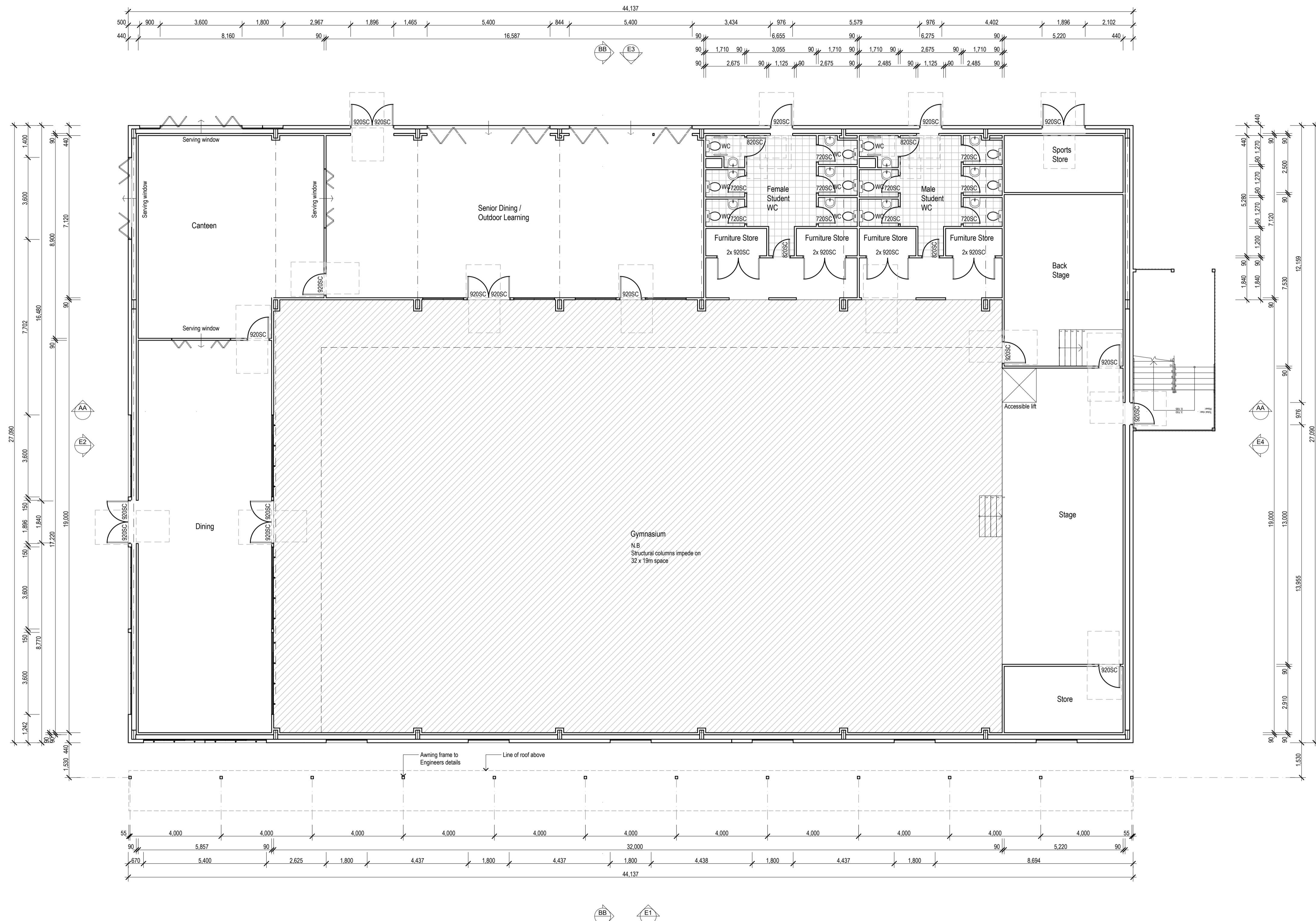
Proposed School
DEZIGN
Lot 1 Magpie Hollow Road South Bowenfels

Learning Centre - Sections
AA & BB
DACC 10

Issue: s
Date: 25/01/24
Project: BMD222389



- Legend**
- A Aluminium
 - B Basin
 - BDRY Boundary
 - BFB Bagged & Painted Brickwork
 - BY Brick Veneer
 - CL Ceiling Level
 - CONC Concrete
 - CP Concrete Paver
 - CPT Carpet
 - CRS Corrugated Roof Sheetting
 - CS Cavity Sliding Door
 - CT Ceramic Tile
 - DH Double Hung
 - DP Downpipe
 - EMB Electrical Meterboard
 - ENS Ensuite
 - FB Face Brick
 - FC Fibre Cement
 - FFL Finished Floor Level
 - F Fixed Glass
 - FW Floor Waste
 - GM Gas Meter
 - HC Hollow Core
 - HWS Hot Water Service
 - LDRY Laundry
 - MH Manhole
 - P Pantry
 - PB Plasterboard
 - O Obsolete Glass
 - OG Obscure Glass
 - REF Refrigerator
 - RH Rangehood Above
 - RL Reduced Level
 - SC Solid Core
 - SD Sliding Door
 - SHR Shower
 - SS Stainless Steel Sink
 - SV Stone Veneer
 - T Tub
 - TC Texture Coated Hebel
 - TF Timber Floor Finish
 - TYP Typical
 - UBO Under Bench Oven
 - VL Vinyl Floor Finish
 - WB Weatherboards
 - WC Water Closet
 - W Water Meter
 - WM Washing Machine
 - X Sliding panel



Compartment Schedule	Area	Volume
Classrooms	1364.4 m ²	6003.36 m ³
Gym	1657.5 m ²	10880.87 m ³
Total Building (Excl. Link)	3021.9 m²	16884.23 m³
Link	230.4 m ²	1013.76 m ³

NOT FOR CONSTRUCTION

BRETT MOULDS
 DESIGN & DRAFTING
 12 MAXWELL DRIVE, EGLINTON NSW 2795
 P 02 6332 5885
 M 0424 156 450
 E BRETT@BMD.COM.AU



Date	Issue	Amendment
25/01/24	S	ISSUED FOR DA APPROVAL

Date	Issue	Amendment
09/11/23	M	Issued for comment
09/11/23	N	Issued for comment
19/12/23	O	Issued for comment
21/12/23	P	Issued for final comment
24/12/23	Q	Awning added to additional drawings
18/01/24	R	Issued for comment

Date	Issue	Amendment
14/09/23	G	Survey details incorporated
29/09/23	H	Issued for comment
06/10/23	I	Issued for comment
09/10/23	J	Issued for comment
20/10/23	K	Issued for comment
25/10/23	L	Issued for comment

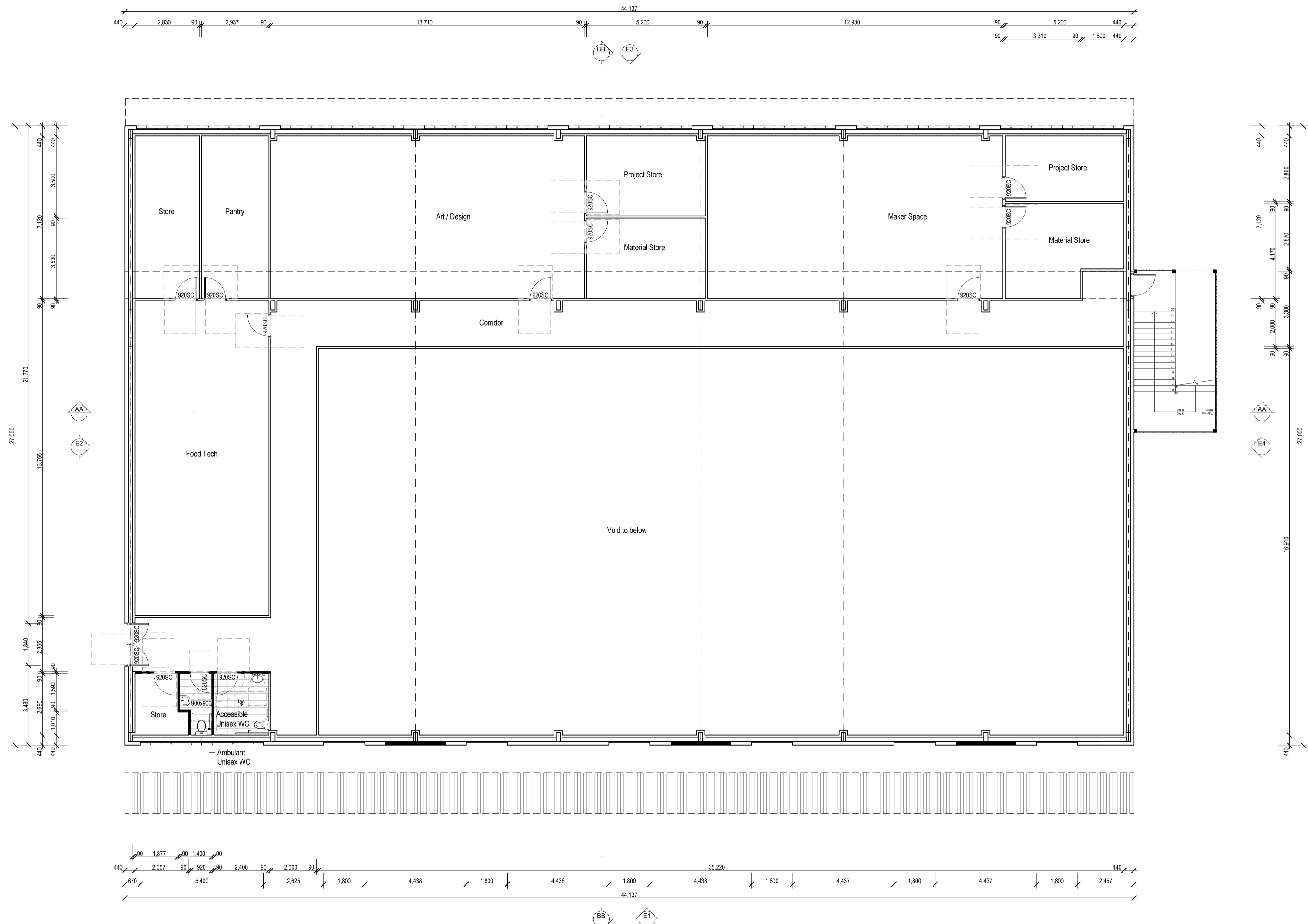
Date	Issue	Amendment
13/04/23	A	Issued for comment
13/04/23	B	Issued for comment
08/05/23	C	Issued for comment
13/07/23	D	Issued for comment
24/08/23	E	Issued for comment
05/09/23	F	Issued for comment

Proposed School
 DEZIGN
 Lot 1 Magpie Hollow Road South Bowenfels

Gymnasium - Ground Floor Plan
DACC 11
 Issue: S
 Scale: 1:100 @ A1
 Date: 25/01/24
 Project: BMD222389



- Legend**
- A Aluminium
 - B Basin
 - BDRY Boundary
 - BFB Bagged & Painted Brickwork
 - BV Brick Veneer
 - CL Ceiling Level
 - CONC Concrete
 - CP Concrete Paver
 - CPT Carpet
 - CRS Corrugated Roof Sheetting
 - CS Cavity Sliding Door
 - CT Ceramic Tile
 - DH Double Hung
 - DP Downpipe
 - EMB Electrical Meterboard
 - ENS Ensuite
 - FB Face Brick
 - FC Fibre Cement
 - FFL Finished Floor Level
 - F Fixed Glass
 - FW Floor Waste
 - GM Gas Meter
 - HC Hollow Core
 - HWS Hot Water Service
 - LDRY Laundry
 - MH Manhole
 - P Pantry
 - PB Plasterboard
 - O Fixed Panel
 - OG Obscure Glass
 - REF Refrigerator
 - RH Rangehood Above
 - RL Reduced Level
 - SC Solid Core
 - SD Sliding Door
 - SHR Shower
 - SS Stainless Steel Sink
 - SV Stone Veneer
 - T Tub
 - TC Texture Coated Hebel
 - TF Timber Floor Finish
 - TYP Typical
 - UBO Under Bench Oven
 - VL Vinyl Floor Finish
 - WB Weatherboards
 - WC Water Closet
 - W Water Meter
 - WM Washing Machine
 - X Sliding panel



Compartment Schedule	Area	Volume
Classrooms	1364.4 m ²	6003.36 m ³
Gym	1657.5 m ²	10880.87 m ³
Total Building (Excl. Link)	3021.9 m²	16884.23 m³
Link	230.4 m ²	1013.76 m ³

BRETT MOULDS
DESIGN & DRAFTING
P 02 6332 5885
M 0424 156 450
E BRETT@BMD.COM.AU
12 MAXWELL DRIVE, EGLINTON NSW 2795



Date	Issue	Amendment
25/01/24	S	ISSUED FOR DA APPROVAL

Date	Issue	Amendment
09/11/23	M	Issued for comment
09/11/23	N	Issued for comment
19/12/23	O	Issued for comment
21/12/23	P	Issued for final comment
24/12/23	Q	Awning added to additional drawings
18/01/24	R	Issued for comment

Date	Issue	Amendment
14/09/23	G	Survey details incorporated
29/09/23	H	Issued for comment
06/10/23	I	Issued for comment
09/10/23	J	Issued for comment
20/10/23	K	Issued for comment
25/10/23	L	Issued for comment

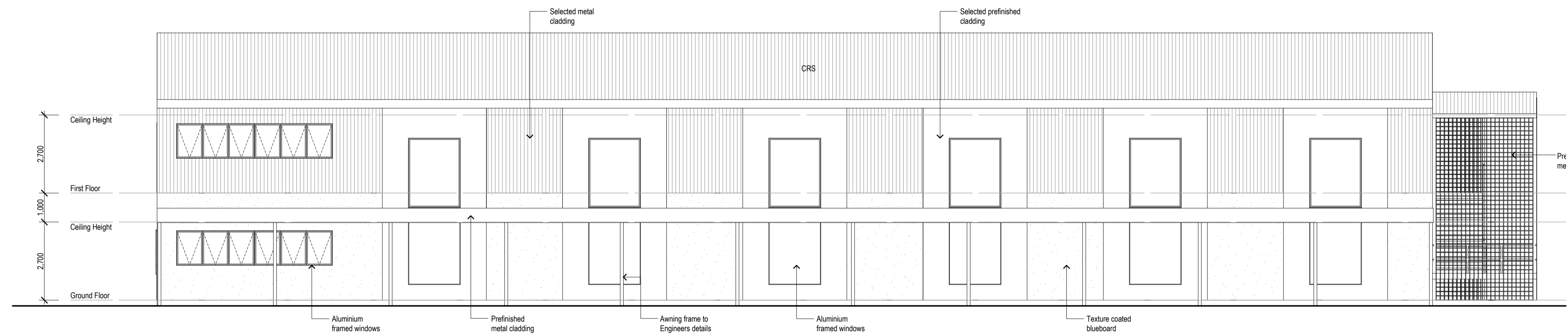
Date	Issue	Amendment
13/04/23	A	Issued for comment
13/04/23	B	Issued for comment
08/06/23	C	Issued for comment
13/07/23	D	Issued for comment
24/08/23	E	Issued for comment
05/09/23	F	Issued for comment

Proposed School
DEZIGN
Lot 1 Magpie Hollow Road South Bowenfels

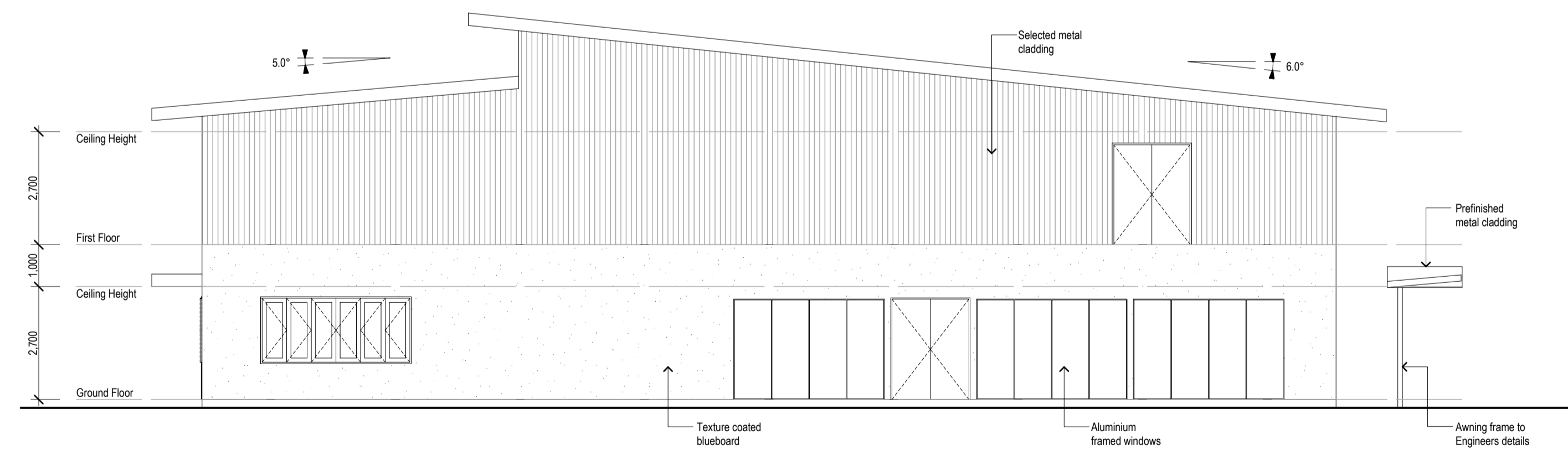
Gymnasium - First Floor Plan
DACC 12
Issue: S
Scale: 1:100 @ A1
Date: 25/01/24
Project: BMD222389



- Legend**
- A Aluminium
 - B Basin
 - BDRY Boundary
 - BFB Bagged & Painted Brickwork
 - BV Brick Veneer
 - CL Ceiling Level
 - CONC Concrete
 - CP Concrete Paver
 - CPT Carpet
 - CRS Corrugated Roof Sheetting
 - CS Cavity Sliding Door
 - CT Ceramic Tile
 - DH Double Hung
 - DP Downpipe
 - EMB Electrical Meterboard
 - ENS Ensuite
 - FB Face Brick
 - FC Fibre Cement
 - FFL Finished Floor Level
 - F Fixed Glass
 - FW Floor Waste
 - GM Gas Meter
 - HC Hollow Core
 - HWS Hot Water Service
 - LDRY Laundry
 - MH Manhole
 - P Pantry
 - PB Plasterboard
 - O Fixed Panel
 - OG Obscure Glass
 - REF Refrigerator
 - RH Rangehood Above
 - RL Reduced Level
 - SC Solid Core
 - SD Sliding Door
 - SHR Shower
 - SS Stainless Steel Sink
 - SV Stone Veneer
 - T Tub
 - TC Texture Coated Hebel
 - TF Timber Floor Finish
 - TYP Typical
 - UBO Under Bench Oven
 - VL Vinyl Floor Finish
 - WB Weatherboards
 - WC Water Closet
 - W Water Meter
 - WM Washing Machine
 - X Sliding panel



Gymnasium - Elevation 1
Scale 1:100



Gymnasium - Elevation 2
Scale 1:100

NOT FOR CONSTRUCTION

Date	Issue	Amendment
25/01/24	S	ISSUED FOR DA APPROVAL

Date	Issue	Amendment
09/11/23	M	Issued for comment
09/11/23	N	Issued for comment
19/12/23	O	Issued for comment
21/12/23	P	Issued for final comment
24/12/23	Q	Awning added to additional drawings
18/01/24	R	Issued for comment

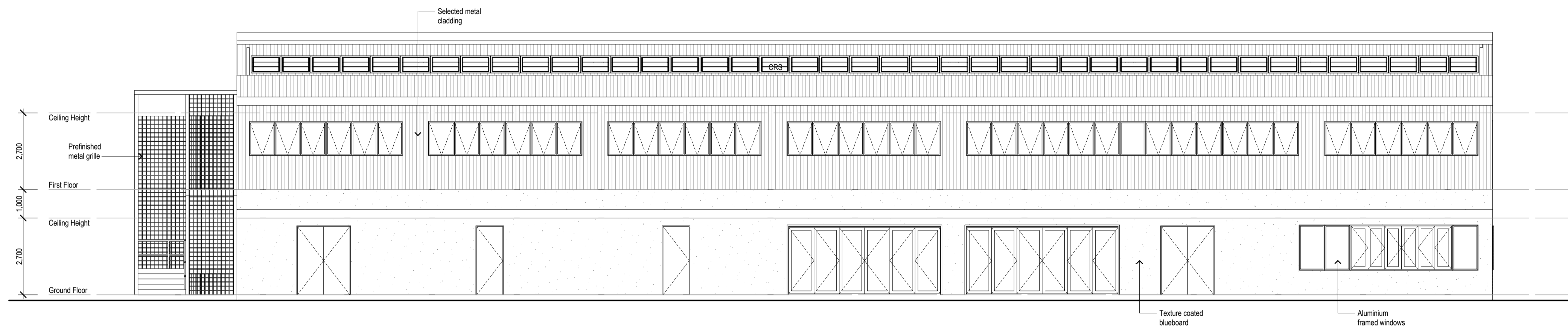
Date	Issue	Amendment
14/09/23	G	Survey details incorporated
29/09/23	H	Issued for comment
06/10/23	I	Issued for comment
09/10/23	J	Issued for comment
20/10/23	K	Issued for comment
25/10/23	L	Issued for comment

Date	Issue	Amendment
13/04/23	A	Issued for comment
13/04/23	B	Issued for comment
08/05/23	C	Issued for comment
13/07/23	D	Issued for comment
24/08/23	E	Issued for comment
05/09/23	F	Issued for comment

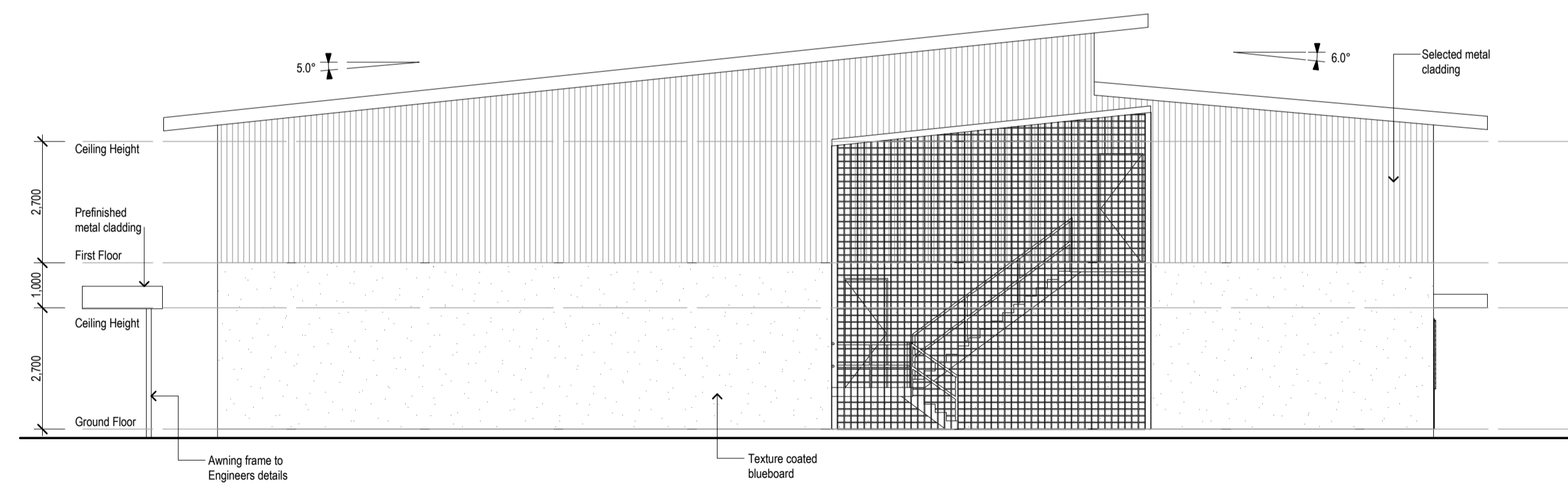


Legend

A	Aluminium
B	Basin
BDRY	Boundary
BFB	Bagged & Painted Brickwork
BV	Brick Veneer
CL	Ceiling Level
CONC	Concrete
CP	Concrete Paver
CPT	Carpet
CRS	Corrugated Roof Sheeting
CS	Cavity Sliding Door
CT	Ceramic Tile
DH	Double Hung
DP	Downpipe
EMB	Electrical Meterboard
ENS	Ensuite
FB	Face Brick
FC	Fibre Cement
FFL	Finished Floor Level
F	Fixed Glass
FW	Floor Waste
GM	Gas Meter
HC	Hollow Core
HWS	Hot Water Service
LDRY	Laundry
MH	Manhole
P	Pantry
PB	Plasterboard
O	Fixed Panel
OG	Obscure Glass
REF	Refrigerator
RH	Rangehood Above
RL	Reduced Level
SC	Solid Core
SD	Sliding Door
SHR	Shower
SS	Stainless Steel Sink
SV	Stone Veneer
T	Tub
TC	Texture Coated Hebel
TF	Timber Floor Finish
TYP	Typical
UBO	Under Bench Oven
VL	Vinyl Floor Finish
WB	Weatherboards
WC	Water Closet
W	Water Meter
WM	Washing Machine
X	Sliding panel

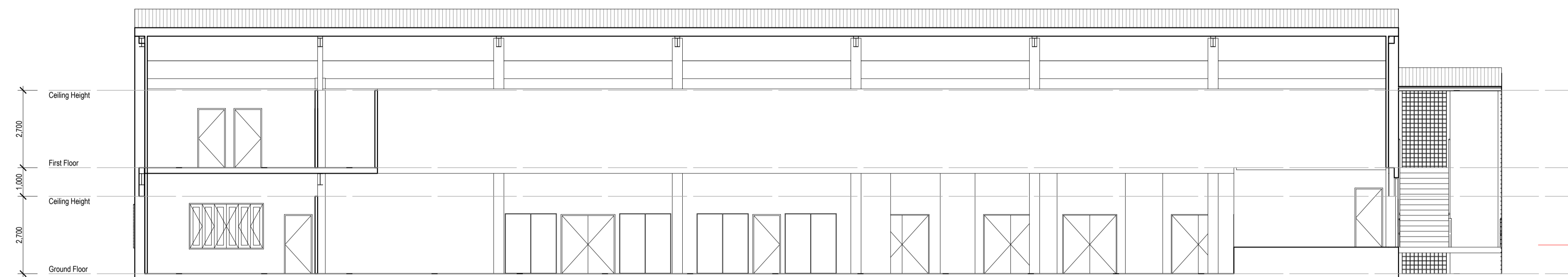


Gymnasium - Elevation 3
Scale 1:100

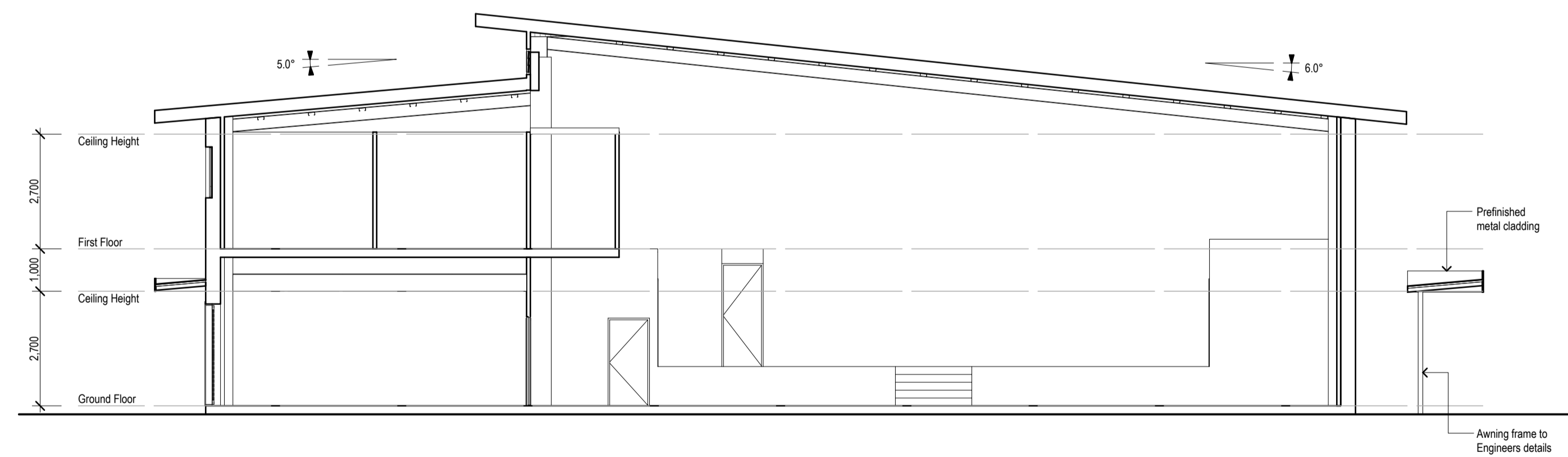


Gymnasium - Elevation 4
Scale 1:100

Date	Issue	Amendment	Date	Issue	Amendment	Date	Issue	Amendment	Date	Issue	Amendment
25/01/24	S	ISSUED FOR DA APPROVAL	09/11/23	M	Issued for comment	14/09/23	G	Survey details incorporated	13/04/23	A	Issued for comment
			09/11/23	N	Issued for comment	29/09/23	H	Issued for comment	13/04/23	B	Issued for comment
			19/12/23	O	Issued for comment	06/10/23	I	Issued for comment	08/05/23	C	Issued for comment
			21/12/23	P	Issued for final comment	09/10/23	J	Issued for comment	13/07/23	D	Issued for comment
			24/12/23	Q	Awning added to additional drawings	20/10/23	K	Issued for comment	24/08/23	E	Issued for comment
			18/01/24	R	Issued for comment	25/10/23	L	Issued for comment	05/09/23	F	Issued for comment



Gymnasium - Section AA
Scale 1:100



Gymnasium - Section BB
Scale 1:100

NOT FOR CONSTRUCTION

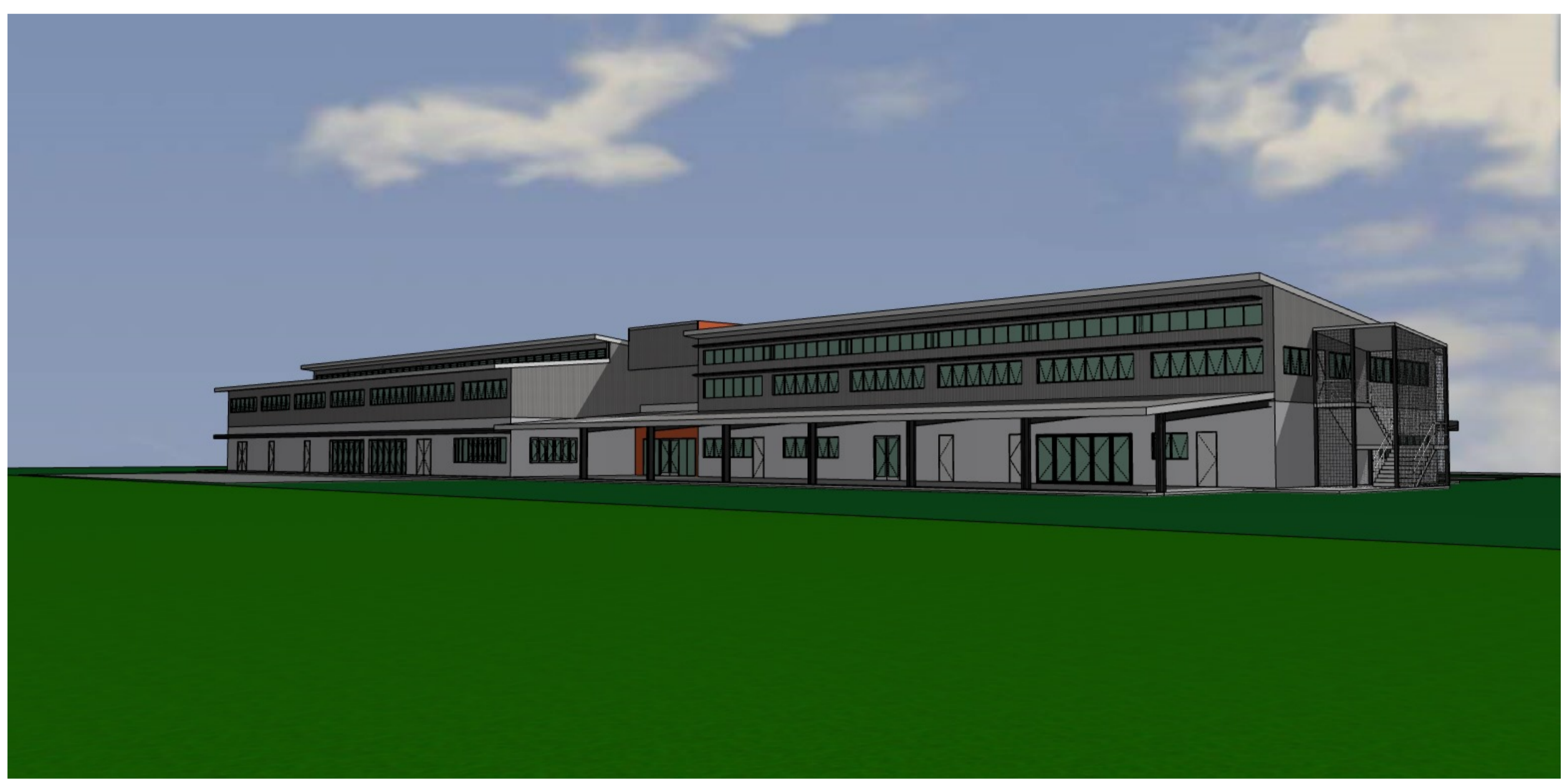
Date	Issue	Amendment	Date	Issue	Amendment	Date	Issue	Amendment
25/01/24	S	ISSUED FOR DA APPROVAL	09/11/23	M	Issued for comment	14/09/23	G	Survey details incorporated
			09/11/23	N	Issued for comment	29/09/23	H	Issued for comment
			19/12/23	O	Issued for comment	06/10/23	I	Issued for comment
			21/12/23	P	Issued for final comment	09/10/23	J	Issued for comment
			24/12/23	Q	Awning added to additional drawings	20/10/23	K	Issued for comment
			18/01/24	R	Issued for comment	25/10/23	L	Issued for comment
						13/04/23	A	Issued for comment
						13/04/23	B	Issued for comment
						08/05/23	C	Issued for comment
						13/07/23	D	Issued for comment
						24/08/23	E	Issued for comment
						05/09/23	F	Issued for comment

Proposed School
DEZIGN
Lot 1 Magpie Hollow Road South Bowenfels

Gymnasium - Sections AA & BB
DACC 15
Issue: s
Date: 25/01/24
Project: BMD222389



- C01**
Off White
Ground floor texture
coated walls
- C02**
Yellow
Pantone 130C
Feature wall colour
- C03**
Orange
Feature wall colour
- P04**
Dulux Shale Grey
Fascias,
Downpipes,
Awning posts
- P05**
Dulux Basalt
Awning fascia
- P06**
Dulux Monument
Windows
Stair grille
- Colorbond**
Shale Grey
Roof, First floor
wall cladding



NOT FOR CONSTRUCTION

Date	Issue	Amendment	Date	Issue	Amendment
25/01/24	S	ISSUED FOR DA APPROVAL	09/11/23	M	Issued for comment
			09/11/23	N	Issued for comment
			19/12/23	O	Issued for comment
			21/12/23	P	Issued for final comment
			24/12/23	Q	Awning added to additional drawings
			18/01/24	R	Issued for comment

Date	Issue	Amendment	Date	Issue	Amendment
14/09/23	G	Issued for comment	13/04/23	A	Survey details incorporated
29/09/23	H	Issued for comment	13/04/23	B	Issued for comment
06/10/23	I	Issued for comment	08/06/23	C	Issued for comment
09/10/23	J	Issued for comment	13/07/23	D	Issued for comment
20/10/23	K	Issued for comment	24/08/23	E	Issued for comment
25/10/23	L	Issued for comment	05/09/23	F	Issued for comment

Date	Issue	Amendment	Date	Issue	Amendment
14/09/23	G	Issued for comment	13/04/23	A	Survey details incorporated
29/09/23	H	Issued for comment	13/04/23	B	Issued for comment
06/10/23	I	Issued for comment	08/06/23	C	Issued for comment
09/10/23	J	Issued for comment	13/07/23	D	Issued for comment
20/10/23	K	Issued for comment	24/08/23	E	Issued for comment
25/10/23	L	Issued for comment	05/09/23	F	Issued for comment

Date	Issue	Amendment	Date	Issue	Amendment
14/09/23	G	Issued for comment	13/04/23	A	Survey details incorporated
29/09/23	H	Issued for comment	13/04/23	B	Issued for comment
06/10/23	I	Issued for comment	08/06/23	C	Issued for comment
09/10/23	J	Issued for comment	13/07/23	D	Issued for comment
20/10/23	K	Issued for comment	24/08/23	E	Issued for comment
25/10/23	L	Issued for comment	05/09/23	F	Issued for comment

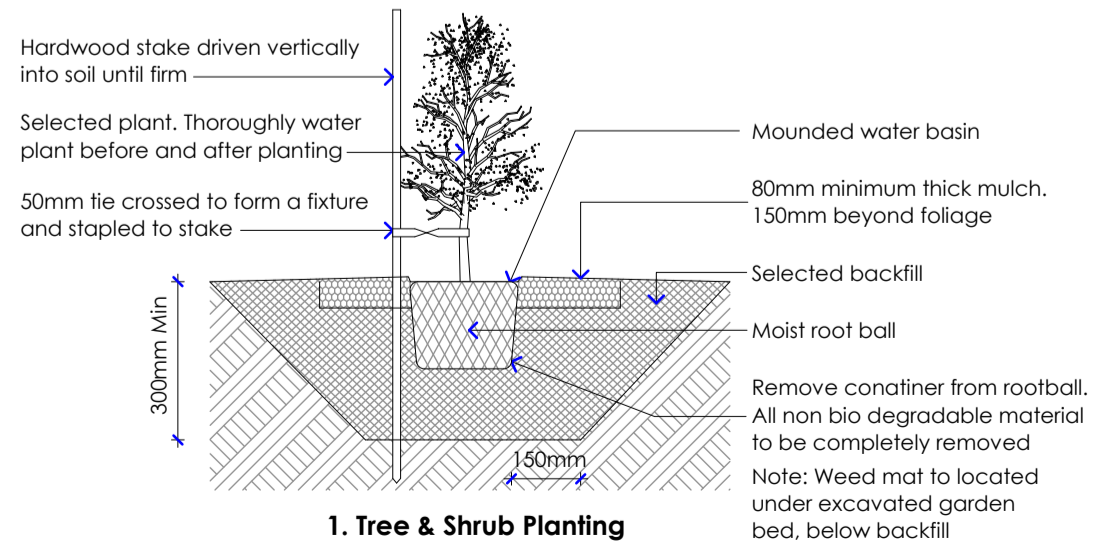
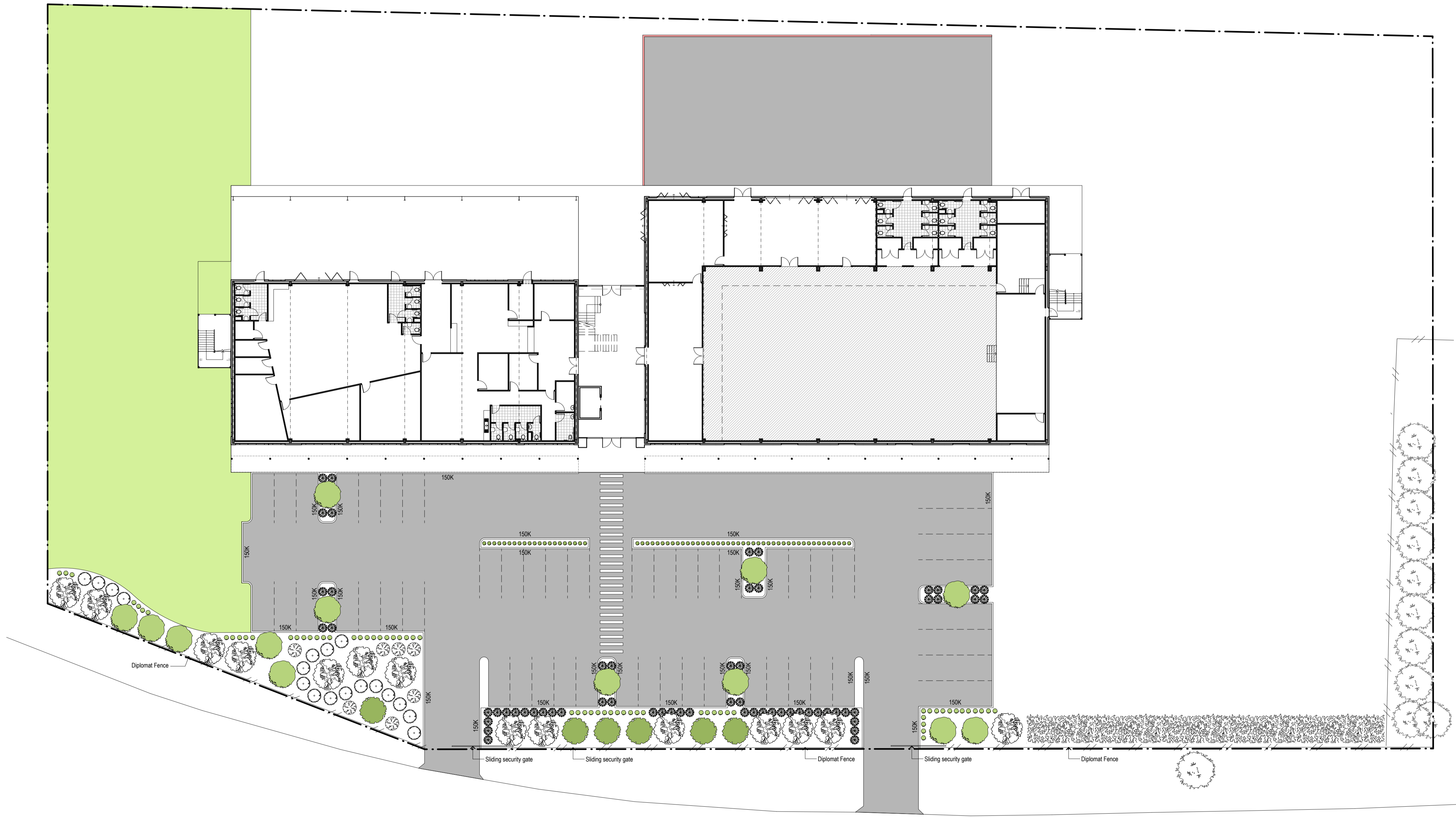


- Legend**
- Turf
 - Concrete/Bitumen
 - 150K 150mmH concrete kerb

- Plant Species**
- Botanical Name:** Pistacia Chinensis
Common Name: Chinese Pistachio
Pot Size: 100 Ltr
Average Height: 4 - 5m
Quantity: 14
 - Botanical Name:** Acer sect. Macrantha
Common Name: Snakebark Maple
Pot Size: 100 Ltr
Average Height: 8m
Quantity: 6
 - Botanical Name:** A. palmatum
Common Name: Japanese Maple
Pot Size: 100 Ltr
Average Height: 4m
Quantity: 13
 - Botanical Name:** Cordyline Australis Sundance
Common Name: Cordyline Sundance
Pot size: 6"
Average Height: 2.5m
Quantity: 7
 - Botanical Name:** Choisya Ternata
Common Name: Mexican Orange Blossom
Pot Size: 6", 1.5m spacing
Average Height: 1m Clipped
Quantity: 18
 - Botanical Name:** Cerastium tomentosum
Common Name: Snow in Summer
Pot Size: 6"
Average Height: 0.2m
Quantity: 61
 - Botanical Name:** Lirioji Muscari - Royal Purple
Common Name: Lily Turf
Pot Size: 6"
Average Height: 60cm
Quantity: 64

Notes:

- Plant selection to be reviewed by landscaping contractor for suitability and appropriate substitutions made where necessary.
- All garden beds are to have an irrigation system installed that will provide adequate water to all plants.

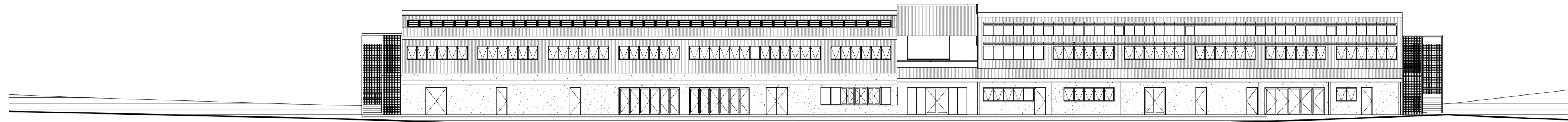


Date	Issue	Amendment	Date	Issue	Amendment
25/01/24	S	ISSUED FOR DA APPROVAL	09/11/23	M	Issued for comment
			09/11/23	N	Issued for comment
			19/12/23	O	Issued for comment
			21/12/23	P	Issued for final comment
			24/12/23	Q	Awning added to additional drawings
			18/01/24	R	Issued for comment

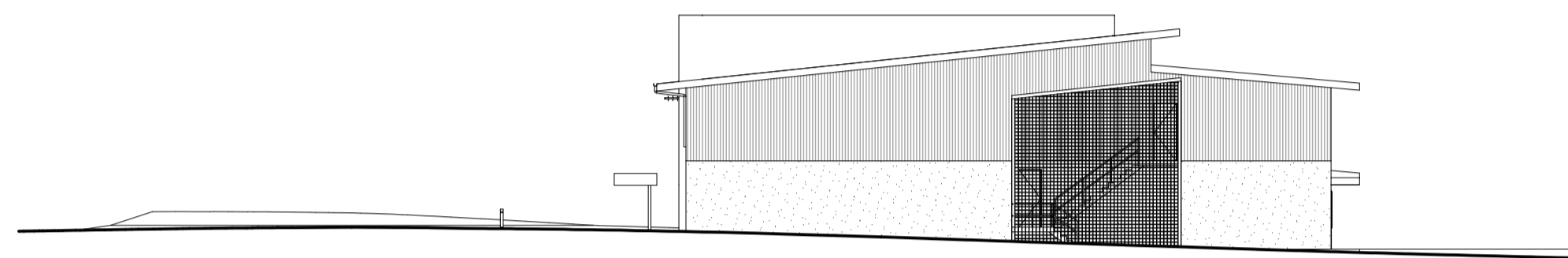
Date	Issue	Amendment	Date	Issue	Amendment
			14/09/23	G	Survey details incorporated
			29/09/23	H	Issued for comment
			06/10/23	I	Issued for comment
			09/10/23	J	Issued for comment
			20/10/23	K	Issued for comment
			25/10/23	L	Issued for comment

Date	Issue	Amendment	Date	Issue	Amendment
			13/04/23	A	Issued for comment
			13/04/23	B	Issued for comment
			08/06/23	C	Issued for comment
			13/07/23	D	Issued for comment
			24/08/23	E	Issued for comment
			05/09/23	F	Issued for comment

NOT FOR CONSTRUCTION



Site Section AA
Scale 1:250



Site Section BB
Scale 1:250

NOT FOR CONSTRUCTION

Date	Issue	Amendment
25/01/24	S	ISSUED FOR DA APPROVAL

Date	Issue	Amendment
09/11/23	M	
09/11/23	N	
19/12/23	O	
21/12/23	P	
24/12/23	Q	
18/01/24	R	

Date	Issue	Amendment
14/09/23	G	
29/09/23	H	
06/10/23	I	
09/10/23	J	
20/10/23	K	
25/10/23	L	

Date	Issue	Amendment
13/04/23	A	
13/04/23	B	
08/05/23	C	
13/07/23	D	
24/08/23	E	
05/09/23	F	

