

DATE OF ISSUE	07.02.2024																			
DRAWING PACKAGE VERSION	1																			

GENERAL DRAWINGS

AN2790-004-P1	DRAFT SITE PLAN	A-1P																		
AN2790-004-P2	DRAFT SITE SETOUT PLAN	A-1P																		
AN2790-004-P3	DRAFT SITE ELEVATION	A-1P																		

LITHGOW NORTH WEST

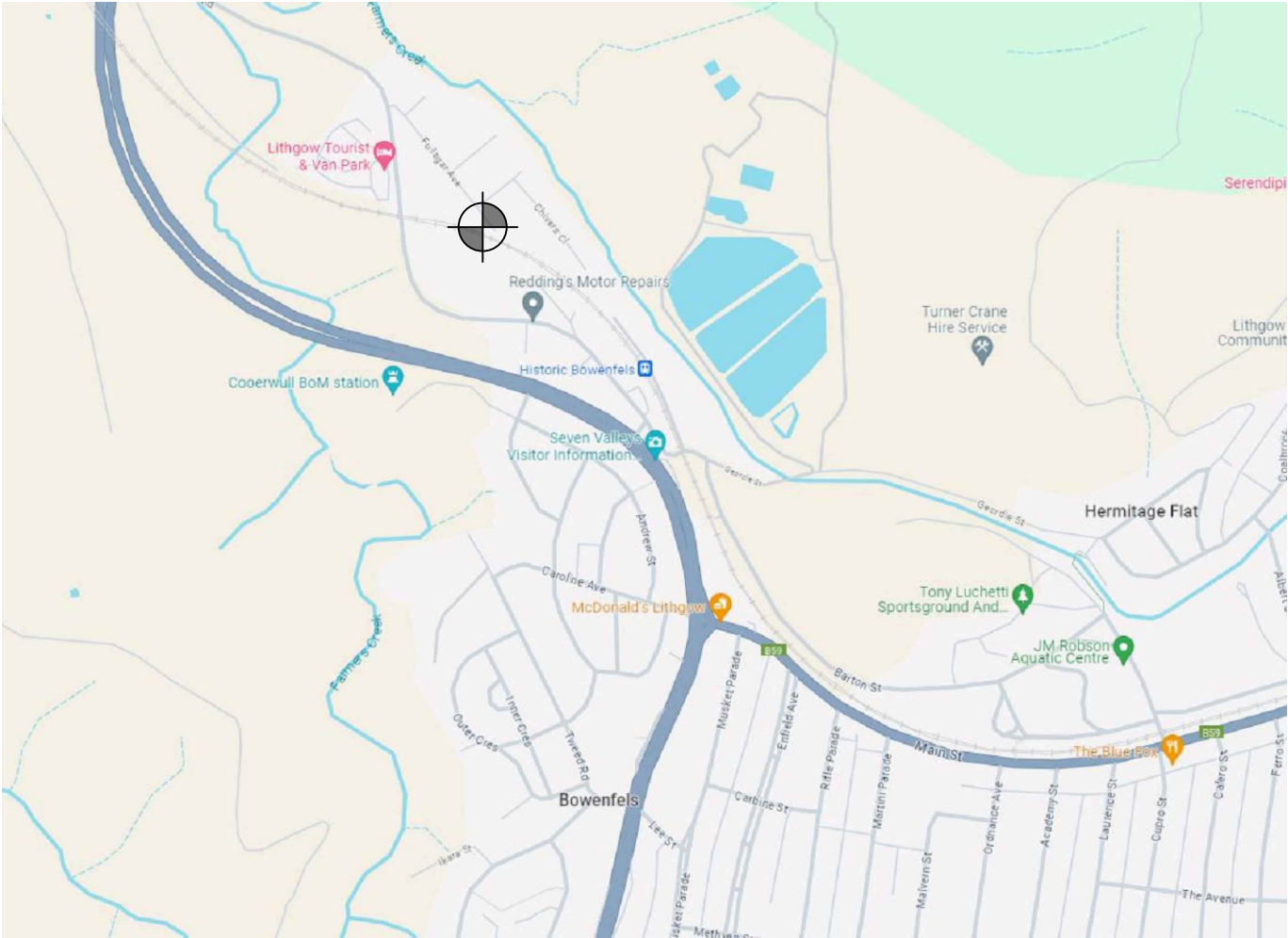
35-43 COOERWULL ROAD,
BOWENFELS,
NSW 2790

SITE ID: AN2790-004



waveconn

City West Office Park
Suite 3.02, Level 3, Building B
33-35 Saunders Street, Pyrmont, NSW 2009
www.waveconn.com



LOCALITY PLAN
NOT TO SCALE

FOR APPROVAL

DRAWING No.
AN2790-004 - 00



PROPOSED SITE ACCESS

PROPERTY BOUNDARY

PROPOSED INSTALLATION AND LEASE AREA (HATCHED)

EXISTING O/H POWER LINES

NOTES:
 1. PROPOSED POWER ROUTE TO BE CONFIRMED AND IS SUBJECT TO POWER AUTHORITY DESIGN & APPROVAL.

SITE PLAN

SCALE 1:1000

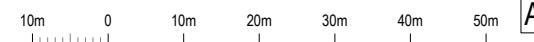
A-1P	07.02.2024	ISSUED FOR APPROVAL	EW	EW	MH
REVISION	DATE	REVISION DESCRIPTION	DRAWN	DESIGNED	APPROVED

City West Office Park
 Suite 3.02, Level 3, Building B
 33-35 Saunders Street, Pymont, NSW 2009
www.waveconn.com

AN2790-004
 LITHGOW NORTH WEST
 35-43 COERWULL ROAD, BOWENFELS, NSW 2790

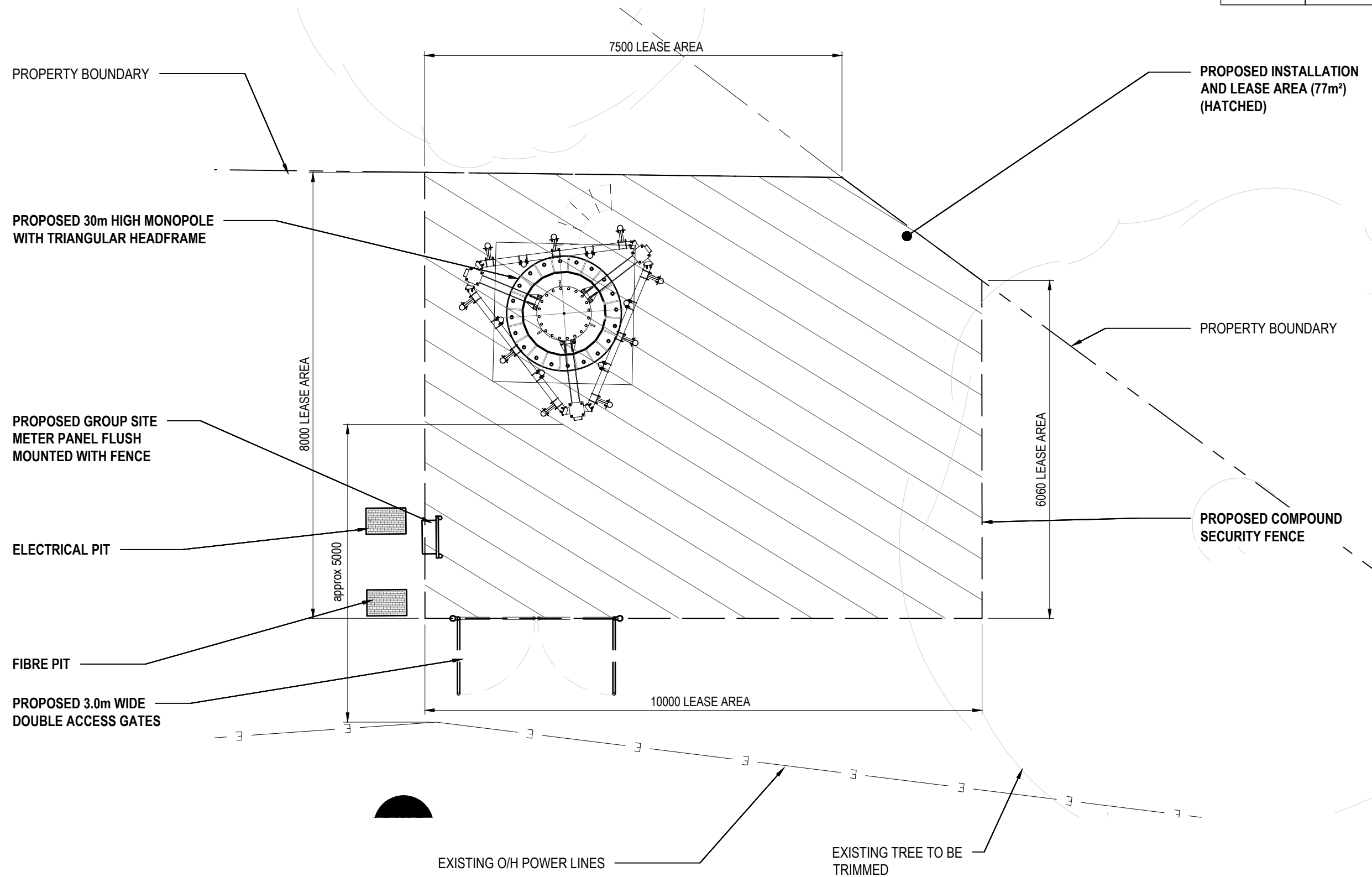
TITLE: DRAFT SITE PLAN		
DRAWING STATUS: FOR APPROVAL	DRAWING No. AN2790-004 - P1	REVISION A-1P

SCALE 1 : 1000 AT A3





DATUM POINT	GDA94 COORDINATES	
	LATITUDE	-33.4741
	LONGITUDE	150.132104



SITE SETOUT PLAN

SCALE 1:75

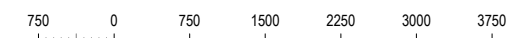
A-1P	07.02.2024	ISSUED FOR APPROVAL	EW	EW	MH
REVISION	DATE	REVISION DESCRIPTION	DRAWN	DESIGNED	APPROVED

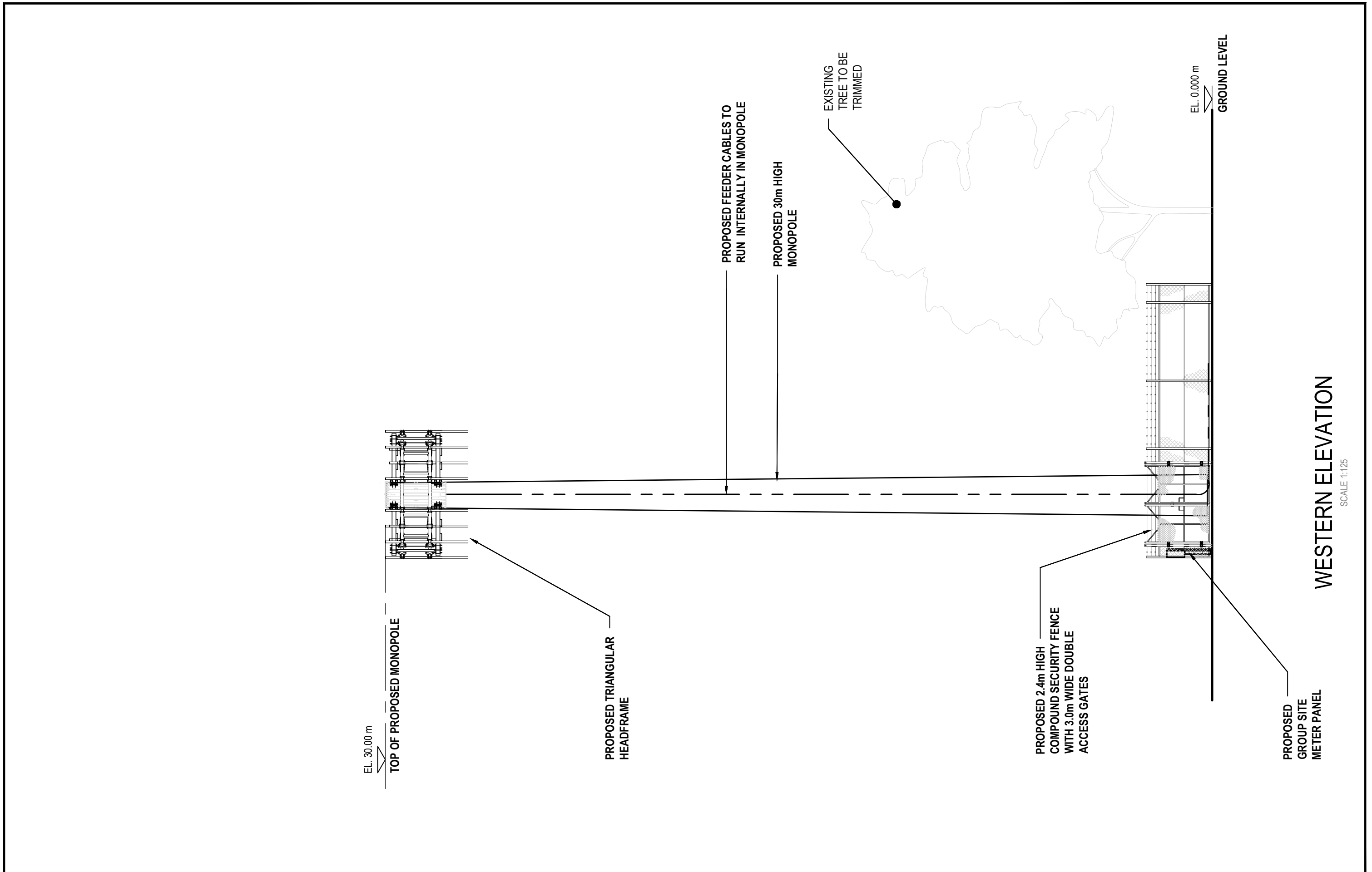
City West Office Park
Suite 3.02, Level 3, Building B
33-35 Saunders Street, Pyrmont, NSW 2009
www.waveconn.com

AN2790-004
LITHGOW NORTH WEST
35-43 COERWULL ROAD, BOWENFELS, NSW 2790

TITLE: DRAFT SITE SETOUT PLAN		
DRAWING STATUS: FOR APPROVAL	DRAWING No. AN2790-004- P2	REVISION A-1P

SCALE 1 : 75 AT A3





A-1P	07.02.2024	ISSUED FOR APPROVAL	EW	EW	MH
REVISION	DATE	REVISION DESCRIPTION	DRAWN	DESIGNED	APPROVED

City West Office Park
Suite 3.02, Level 3, Building B
33-35 Saunders Street, Pyrmont, NSW 2009
www.waveconn.com

AN2790-004
LITHGOW NORTH WEST
35-43 COERWULL ROAD, BOWENFELS, NSW 2790

TITLE: DRAFT SITE ELEVATION		
DRAWING STATUS: FOR APPROVAL	DRAWING No. AN2790-004 - P3	REVISION A-1P