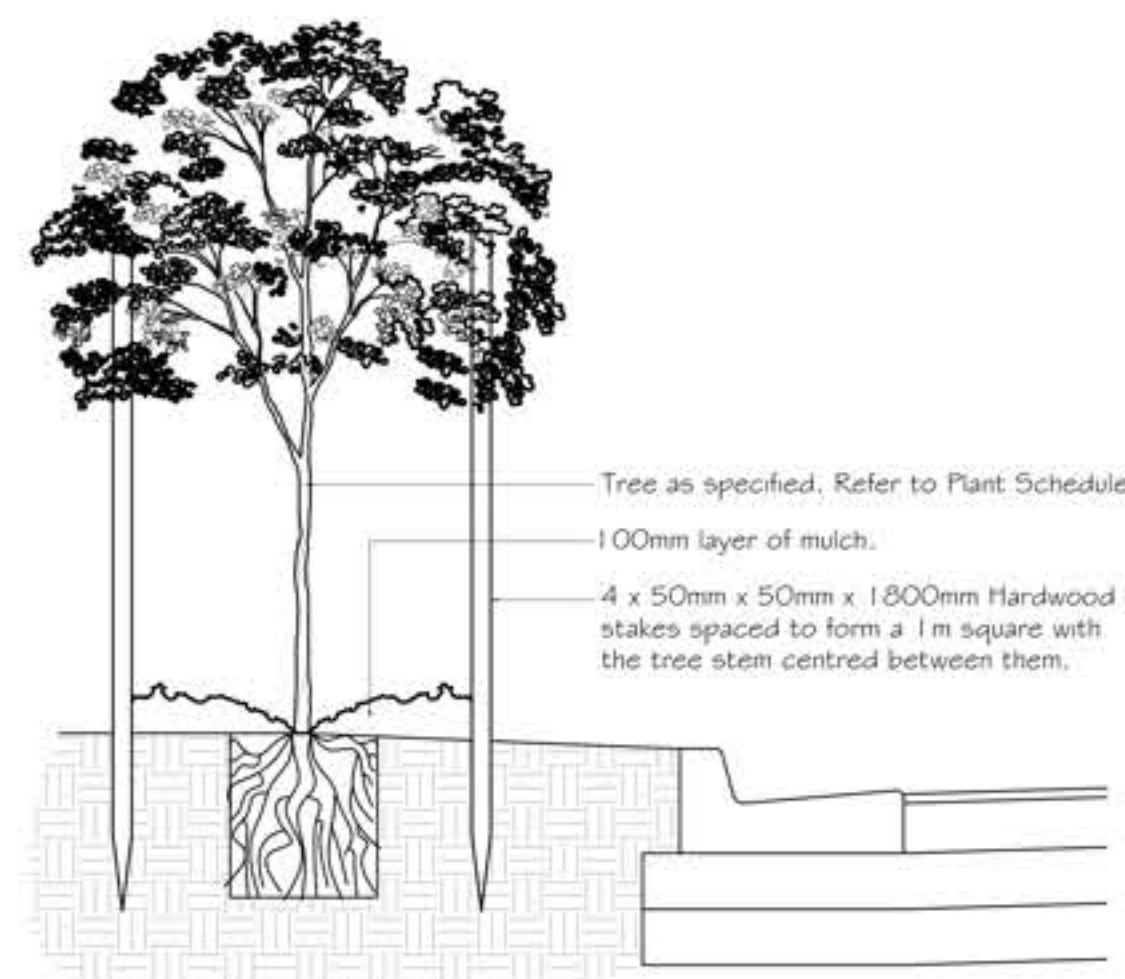


PLANT SCHEDULE - STREET TREES

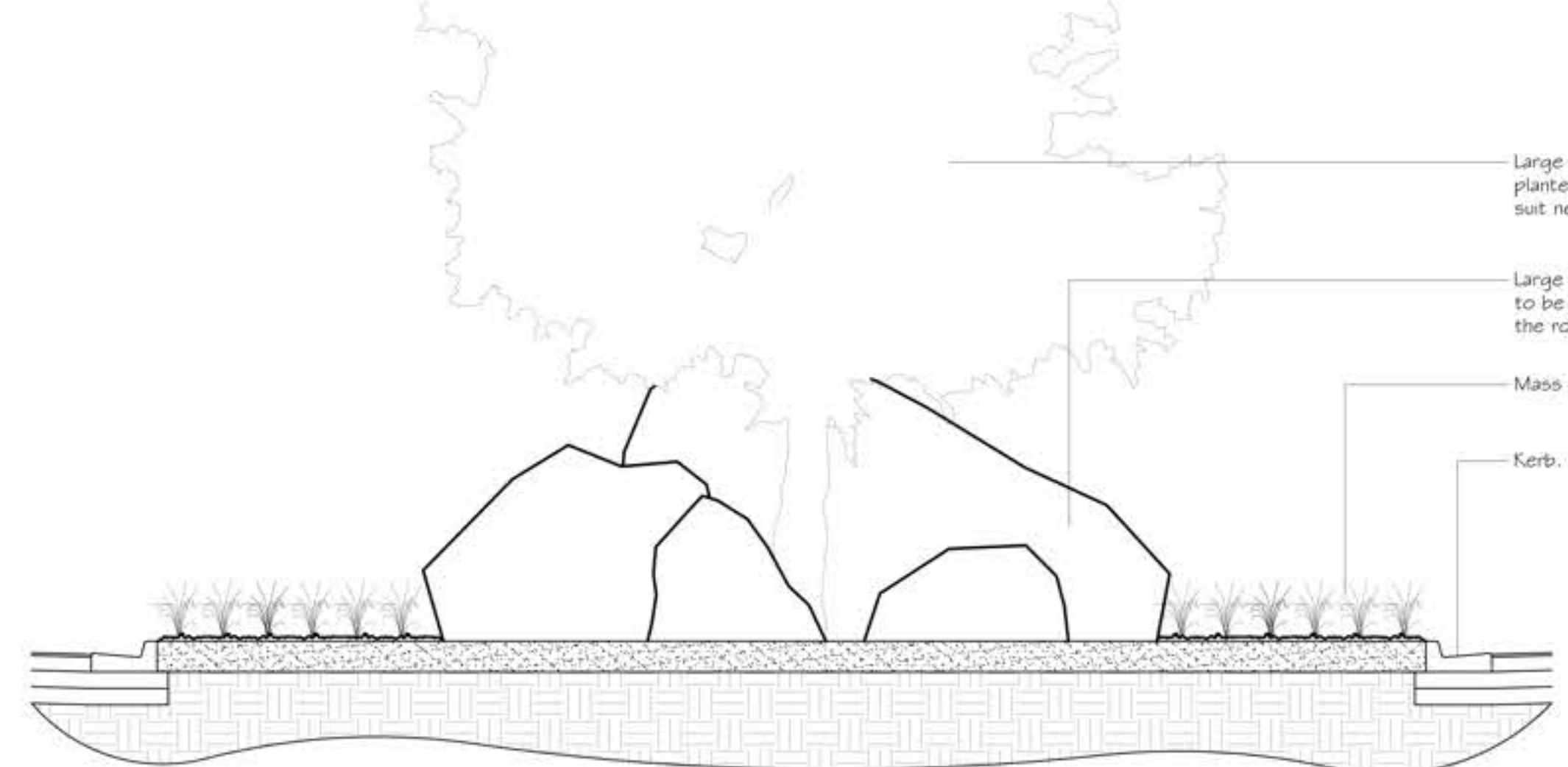
CODE	BOTANICAL NAME	COMMON NAME	QUANTITY	MATURE HEIGHT	CONTAINER SIZE
AAb	<i>Acer 'Autumn Blaze'</i>	Freeman Maple	8	10m	45L
FR	<i>Fraxinus 'Raywoodii'</i>	Claret Ash	6	15m	45L
OE	<i>Olea europaea</i>	Olive	38	5m	45L
PB	<i>Pyrus 'Bradford'</i>	Ornamental Pear	19	12m	45L
QC	<i>Quercus coccinea</i>	Scarlet Oak	2	15m	45L
QL	<i>Quercus lobata</i>	Valley Oak	19	15m	45L

PLANT SCHEDULE - MASS PLANTING

CODE	BOTANICAL NAME	COMMON NAME	QUANTITY	MATURE HEIGHT	CONTAINER SIZE
CC	<i>Casuarina cunninghamiana</i>	River She Oak	120	15m	Tube-stock
CCI	<i>Callistemon ciliatus</i>	Bottlebrush	300	3m	Tube-stock
LL	<i>Lomandra longifolia</i>	Mat Rush	1350	1.5m	Viro-cell
PLe	<i>Poa 'Eskdale'</i>	Tussock Grass	640	0.75m	Viro-cell
QC	<i>Quercus coccinea</i>	Scarlet Oak	6	15m	45L



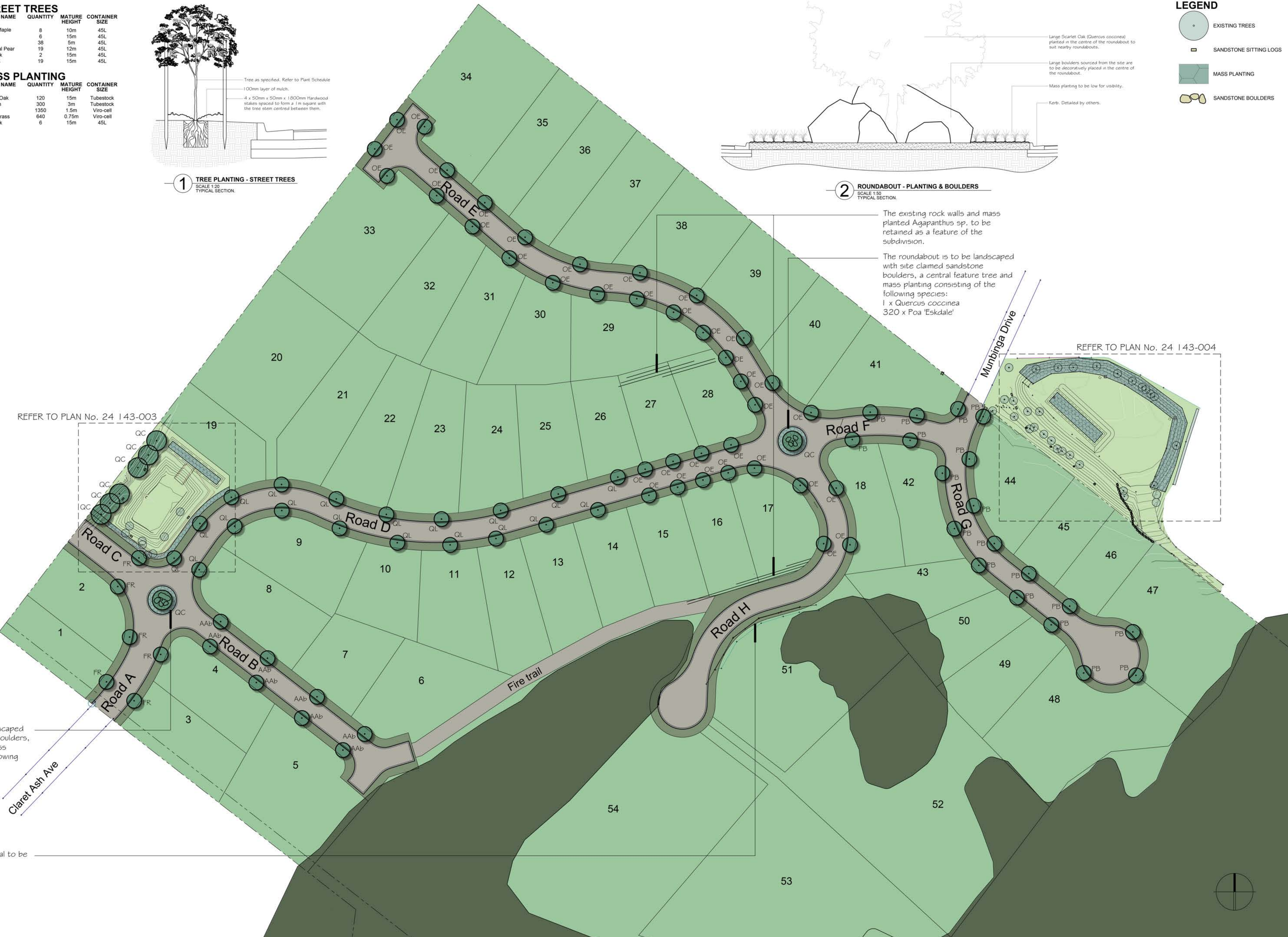
1 TREE PLANTING - STREET TREES
SCALE 1:20
TYPICAL SECTION.



2 ROUNDABOUT - PLANTING & BOULDERS
SCALE 1:50
TYPICAL SECTION.

LEGEND

- EXISTING TREES
- SANDSTONE SITTING LOGS
- MASS PLANTING
- SANDSTONE BOULDERS



REFER TO PLAN No. 24 143-003

REFER TO PLAN No. 24 143-004



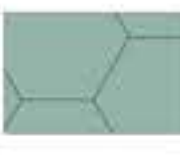

The roundabout is to be landscaped with site claimed sandstone boulders, a central feature tree and mass planting consisting of the following species:
1 x *Quercus coccinea*
320 x *Poa 'Eskdale'*

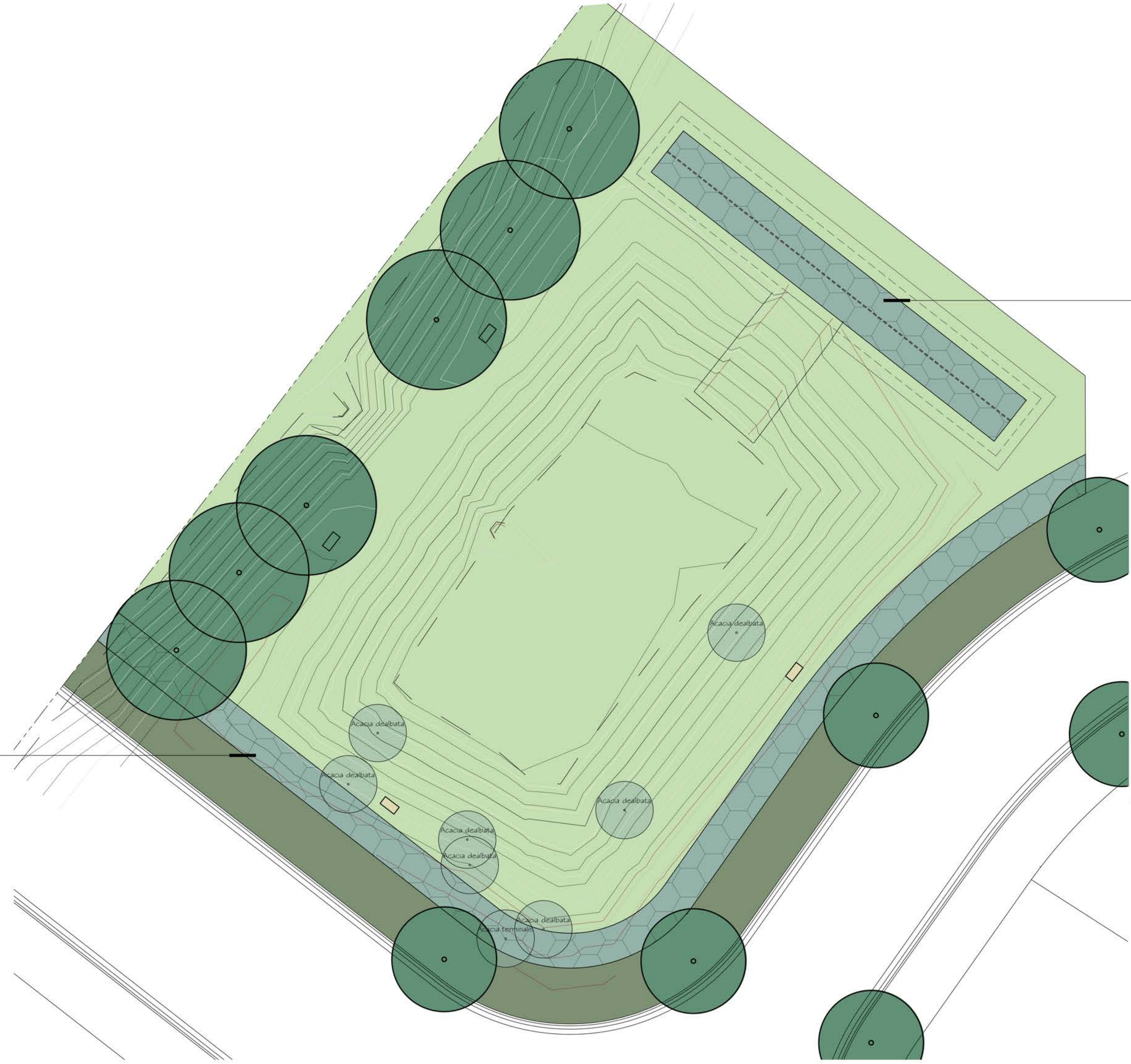
Rock wall 'Yarning Circles' mural to be retained as a feature of the subdivision streetscape.

PLANT SCHEDULE - BIO RETENTION

CODE	BOTANICAL NAME	COMMON NAME	QUANTITY	MATURE HEIGHT	CONTAINER SIZE
BA	<i>Baumea articulata</i>	Twig Rush	60	1.5m	Viro-cell
CA	<i>Carex appressa</i>	Tall Sedge	60	0.75m	Viro-cell
FN	<i>Ficinia nodosa</i>	Knobby Club Rush	60	0.75m	Viro-cell
JF	<i>Juncus flavidus</i>	Yellow Rush	60	0.5m	Viro-cell
JU	<i>Juncus usitatus</i>	Common Rush	60	0.5m	Viro-cell

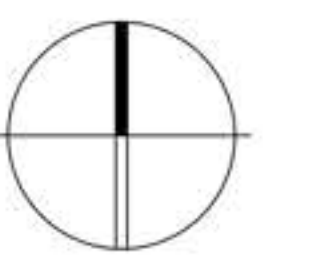
LEGEND

-  EXISTING TREES
-  SANDSTONE SITTING LOGS
-  MASS PLANTING
-  SANDSTONE BOULDERS



Bio Retention Basin (75m²) mass planted with the following species at 4/m². Refer to Conceptual Stormwater Management Plan.
 60 x *Baumea articulata*
 60 x *Carex appressa*
 60 x *Ficinia nodosa*
 60 x *Juncus flavidus*
 60 x *Juncus usitatus*





Mass planted area (148m²) along border of stormwater detention area to consist of the following species:
 150 x *Callistemon citrinus*
 150 x *Lomandra longifolia*
 6 x *Quercus cocinea*

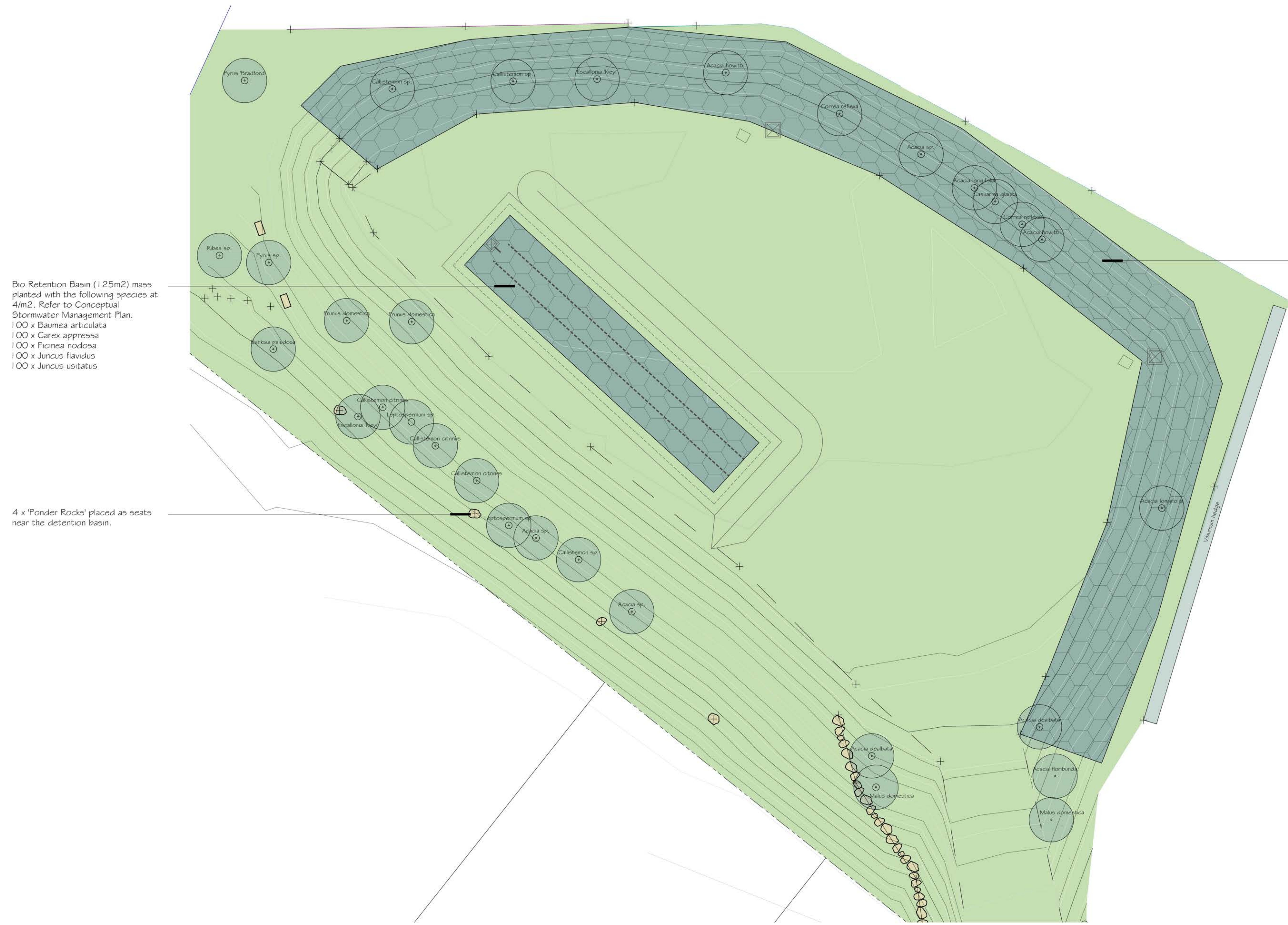


PLANT SCHEDULE - BIO RETENTION

CODE	BOTANICAL NAME	COMMON NAME	QUANTITY	MATURE HEIGHT	CONTAINER SIZE
BA	<i>Baumea articulata</i>	Twig Rush	100	1.5m	Viro-cell
CA	<i>Carex appressa</i>	Tall Sedge	100	0.75m	Viro-cell
FN	<i>Ficinea nodosa</i>	Knobby Club Rush	100	0.75m	Viro-cell
JF	<i>Juncus flavidus</i>	Yellow Rush	100	0.5m	Viro-cell
JU	<i>Juncus usitatus</i>	Common Rush	100	0.5m	Viro-cell

LEGEND

-  EXISTING TREES
-  SANDSTONE SITTING LOGS
-  MASS PLANTING
-  SANDSTONE BOULDERS



Bio Retention Basin (125m²) mass planted with the following species at 4/m². Refer to Conceptual Stormwater Management Plan.
 100 x *Baumea articulata*
 100 x *Carex appressa*
 100 x *Ficinea nodosa*
 100 x *Juncus flavidus*
 100 x *Juncus usitatus*

4 x 'Ponder Rocks' placed as seats near the detention basin.

Mass planted along the northern side of the stormwater detention basin is to compliment the existing planting and enhance basin as a whole. It is to be planted with the following species:
 120 x *Casuarina cunninghamiana*
 150 x *Callistemon citrinus*
 1200 x *Lomandra longifolia*

