



Community Briefing - Project Update

Wolgan Valley Reconstruction Project, 19 December 2024



WASSABI GROUP

Recent activities



Independent
Technical
Reviewer (ITR)

Biodiversity
Surveys

Procurement &
Tenders

Planning
Approval
Pathway

Release of
Subject Matter
Expert Tenders

Stakeholder
Meetings

Independent Technical Reviewer Status

Status Update



ITR Briefing – 11 December in Lithgow



Mobilisation Presentation and Site Visit



Approach to Q&A



Lithgow City Council Resource Availability to resolve any ITR question



Draft ITR assessment report between 27th Jan to 4th Feb.
Final ITR assessment report by the 21st Feb 2025



Engagement

Council is committed to working with knowledge holders, community members, local businesses, landowners and stakeholders throughout the options assessment and design development process.

Aboriginal knowledge holders

- We have had a number of meetings with Mingaan Wiradjuri Aboriginal Corporation and Bathurst Local Aboriginal Land Council regarding the Project.

To allow for formal commencement of engagement with Aboriginal stakeholders the project needs to seek nominations from the community for Registered Aboriginal Parties (RAPs).

Community

- We intend to involve community representatives in the options assessment and design development process.

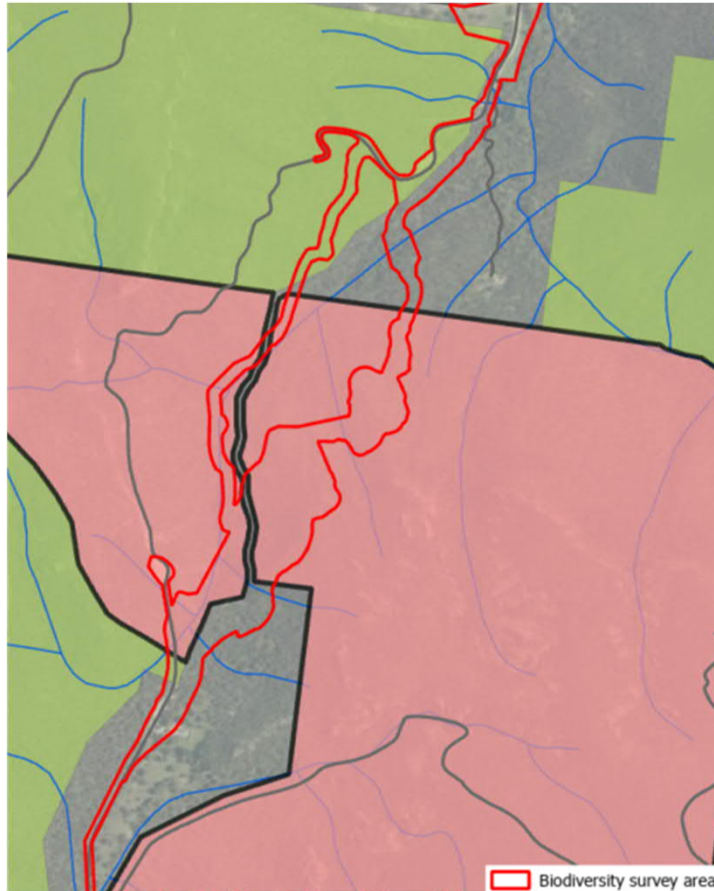
Property owners

- We contacted owners for the purposes of the targeted biodiversity surveys and will continue to keep them informed, including in relation to other investigations that may be required to support the design development process.

Government stakeholders

- We are working closely with Reconstruction Authority NSW, and Transport for NSW as part of a Project Control Group. We have also met with the Crown Lands and Approvals branches of DPHI, and various relevant branches of the Commonwealth and NSW Departments of Climate Change, Energy, the Environment and Water (DCCEE), including NSW Heritage and Biodiversity, Conservation and Science (BCS) branches.

Biodiversity survey area



- We are currently undertaking season-specific threatened species biodiversity surveys to meet time periods specified by relevant biodiversity assessment requirements.
- Data gathered through these surveys will be used in future environmental assessments.
- Biodiversity survey area has been developed to cover potential options considered to date
- Survey area is about 42 hectares
- Limiting surveys to public lands at this stage
- For safety reasons access to the existing road alignment and immediate surrounds is not possible

Biodiversity surveys

- Initial biodiversity surveys to ensure we cover target species at the right time of year
- EMM Pty Ltd have been engaged to carry out initial surveys - www.emmconsulting.com.au following a Lithgow City Council tender process.
- EIS consultant will supplement with additional surveys next year where required
- Initial habitat assessment and refinement of candidate threatened species
- Threatened flora surveys (end October, November, December and February)



Isopogon fletcheri
(Photo: Botanic Gardens Trust)



Grevillea obtusiflora subsp. *fecunda*
(Photo: Metro BCU EPRD)

Targeted biodiversity surveys

- October 2024 stick nest surveys - ecologists walk through landscape to identify stick nests
- November 2024 habitat assessment and spotlighting – ecologists walk along pre-determined routes and used to identify arboreal mammals with spotlight
- December 2024 harp traps, camp search, bat detector (records the echolocation calls of bats) and aural-visual surveys
- February 2025 nest hollow searches and call playback



Little Eagle
(Photo: Leo Berzins)



Broad-headed snake
(Photo: DEC)



Southern Myotis
(Photo: Australian Museum)

Seek early environmental approvals advice

- Working with our specialist advisors, we have consulted with the Department of Planning, Housing and Infrastructure (DPHI) on the planning approval pathway for the project.
- Council has formed the view that the Project will require an Environmental Impact Statement (EIS) and can be self-determined by Council under Division 5.1 of the Environmental Planning and Assessment Act, 1979 (EP&A Act).






TA: CD&EA Services : Main procurement 2-step process







ROI

Registration of Interest (ROI)

- Market Sounding and Research 
 - Engage with potential contractors – Pre-ROI.
 - Understand market and assess capabilities.
- ROI Documentation 
 - Prepare an ROI document.
 - Include project details and evaluation criteria.
- Publish ROI 
 - Advertise on Council platform.
- Evaluate Responses 
 - Assess contractor submissions.
 - Shortlist qualified contractors

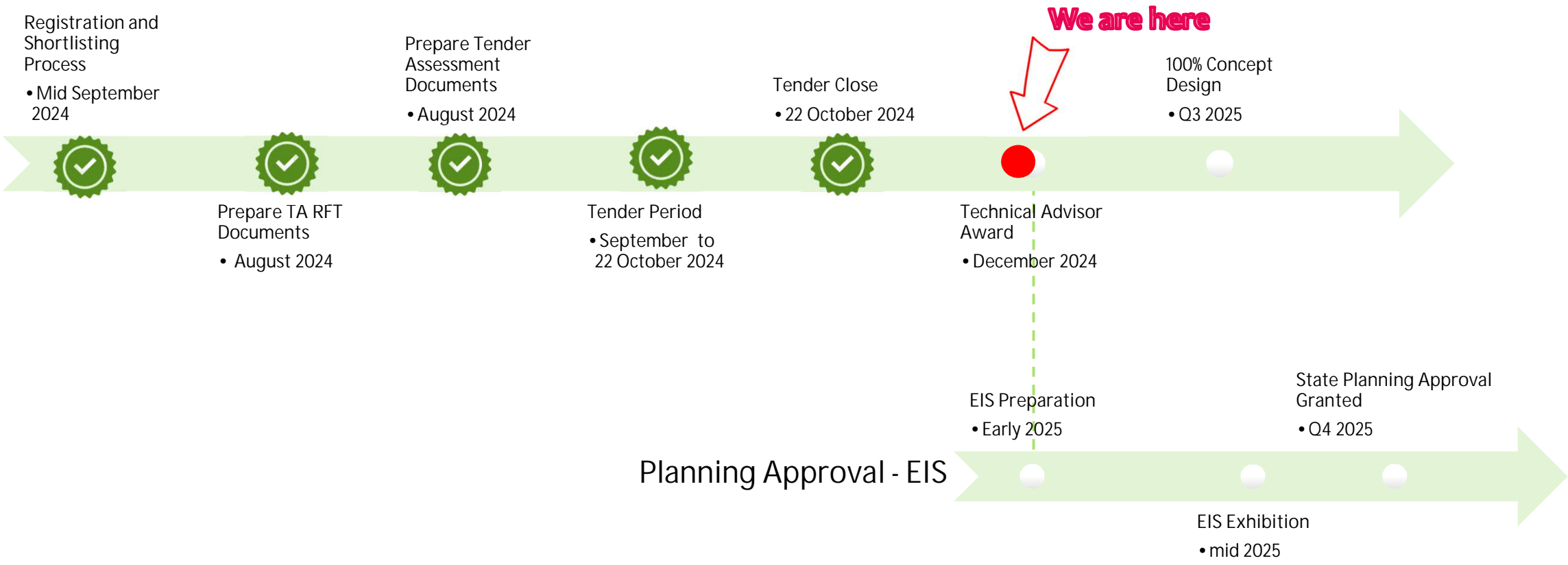
RFT

Request for Tender (RFT)

- Tender Documentation 
 - Develop comprehensive RFT documents.
 - Specify deliverables, timelines, evaluation criteria.
- Publish RFT 
 - Release to shortlisted contractors.
- Tender Submission - RFT Close: 22 Oct 
 - Contractors submit detailed proposals.
 - Include concept design and EIA approaches.
- Evaluation and Selection 
 - Evaluate technical merit and cost.
 - Select the most suitable contractor.
- Contract Award
 - Execute the agreement.



Concept Design & Environmental Assessment (CD&EA) Roadmap



Planning Approval - EIS

Concept Design & Environmental Assessment (CD&EA) Services : Scope of Works



SERVICES STAGE 1 –
ABORIGINAL CULTURAL
HERITAGE ASSESSMENT
REPORT



SERVICES STAGE 2 –
ENVIRONMENTAL IMPACT
ASSESSMENT



SERVICES STAGE 3 – VALUE
MANAGEMENT AND
PREFERRED STRATEGIC
DESIGN



SERVICES STAGE 4 –
CONCEPT DESIGN
DEVELOPMENT TO PS200
SPECS



SERVICES STAGE 5 –
ASSISTANCE WITH SWTC AND
TENDER PROCESS



SERVICES STAGE 6 –
TECHNICAL ADVISOR
SUPPORT DURING DELIVERY

- Engage suitably qualified and experienced SMEs to support Council in managing the PSC
- Time and Disbursement method of tendering with estimated hours provided for tendering.
- Payment will be made based on actual hours worked with a upper limiting fee provided.
- Tenders closed Yesterday – 18 December 2024

Roles

Contract Manager

Digital Engineering Specialist

Roadworks Specialist

Bridgeworks and Structures Specialist

Geotechnical Specialist

Urban Design Specialist

Survey Specialist

Asset Management Specialist

Scope of Work

Support Council in achieving the best outcomes for the project by working collaboratively with the PSC.

Responsibilities include:

- Providing expert guidance to the PSC to ensure project objectives are met.
- Reviewing designs to confirm compliance with stakeholder and environmental requirements,
- Coordinating efforts to exhibit, review the EIS, manage submissions and reach EIS determination.
- Supporting Council in independently verifying the PSC's deliverables where applicable.
- Further details are contained in the RFT documents.
- Tenders closed Yesterday – 18 December 2024

Roles



Principal Environmental & Sustainability Specialist



Senior Environmental & Sustainability Specialist



Environmental & Sustainability Specialist

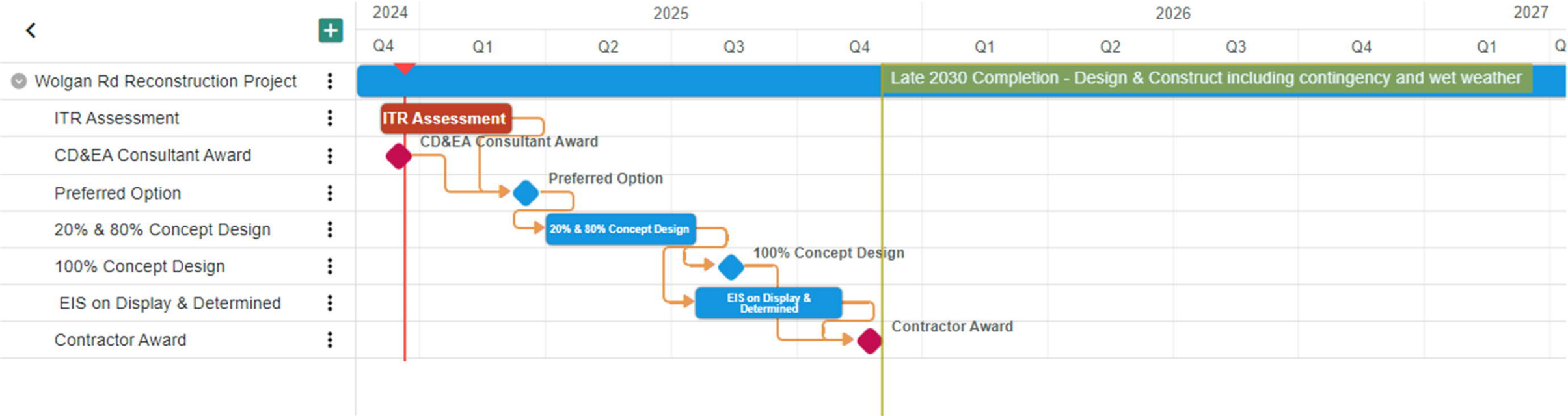


Principal Community & Stakeholder Engagement Specialist



Senior Community & Stakeholder Engagement Specialist

Program Milestone Forecasts



Master Program Milestone Forecasts



Stage	Timing	Milestone
Design	Early Q1 2025	Award of concept design and environmental assessment technical advisor
	Q1 2025	Estimated EPAR application approval
	Q1/Q2 2025	Road alignment multi-criteria assessment
	Q3 2025	Concept design complete for preferred road option
Approvals	Late 2025	Public exhibition of the EIS
Delivery	Early Q1 2026	Detailed design and construction contract awarded
	Q1 2031	Completion of construction and commencement of operation