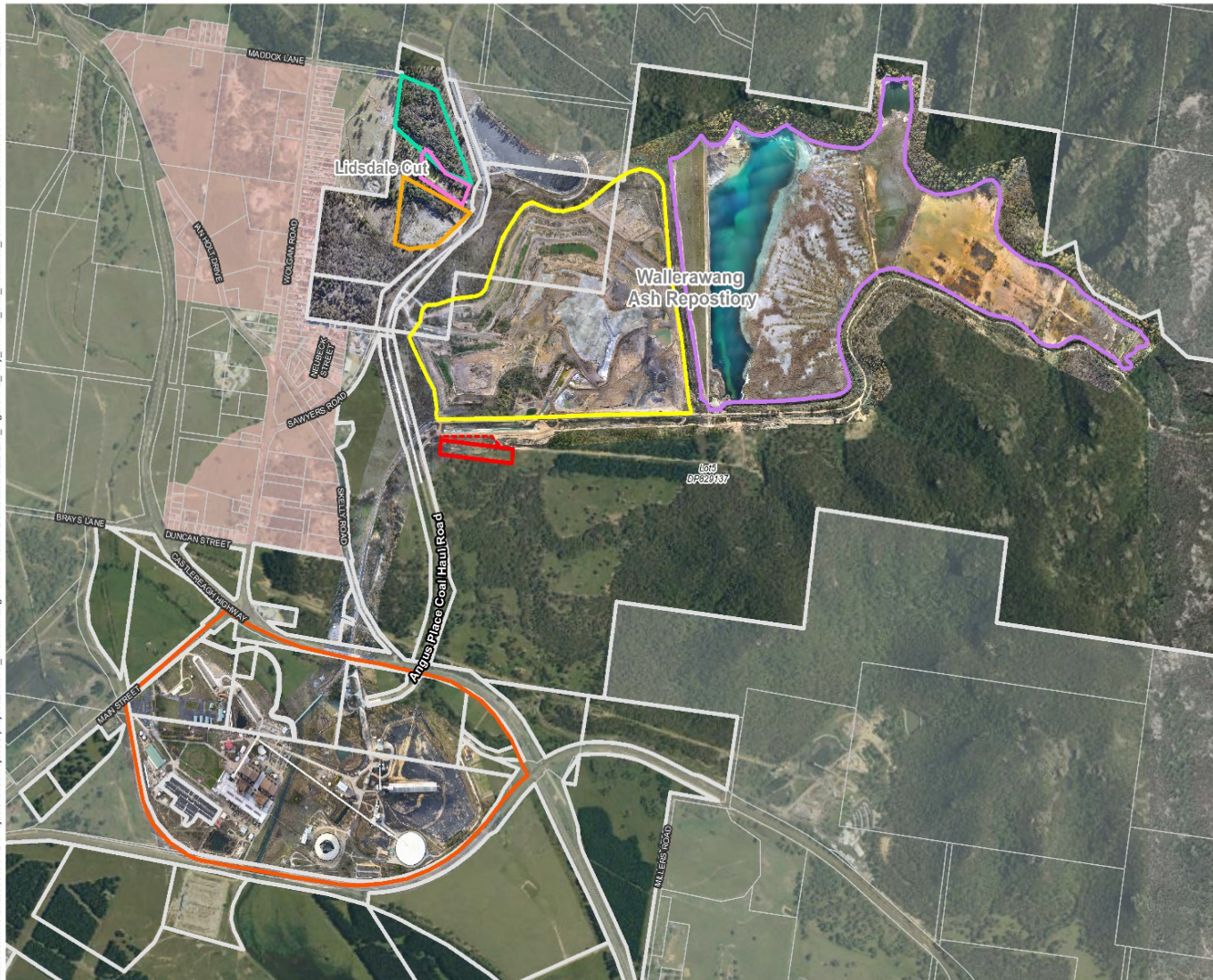
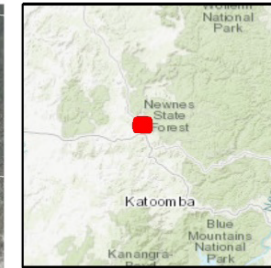


\\aurecon.info\Shares\AUSYD\Projects\GIS\Project-3\Project-3\Figure 1-2_Key_WWPS_Site_Features_rev1.mxd\JOB No.119-09-18\Carmen Braz/Rev 1



aurecon



Legend

- Proposed Asbestos Disposal Area
- Stockpile area
- Sawyers Swamp Creek Ash Dam
- Kerosene Vale Ash Repository
- Current Asbestos Disposal Area
- Closed Asbestos Disposal Area
- Wallerawang Power Station
- EnergyAustralia Owned Land
- Nearest residential receivers

Source: Aurecon, LPI, Esri Topo, Lithgow Local Environmental Plan 2014



1:20,000
0 250 500m

Projection: GDA 1994 MGA Zone 56

Wallerawang Power Station Proposed Asbestos Disposal Area EIS

FIGURE 1-2: Key features of WWPS and Wallerawang Ash Repository