



21 August 2019

OWNER / OCCUPIER

Dear Sir/Madam,

Installation of a mobile phone base station on: Lot 64/-/DP751647, located at 'Yamboon Park' 373 Peach Tree Road, MEGALONG VALLEY, NSW 2785 (Telstra Site Name: Megalong Valley)

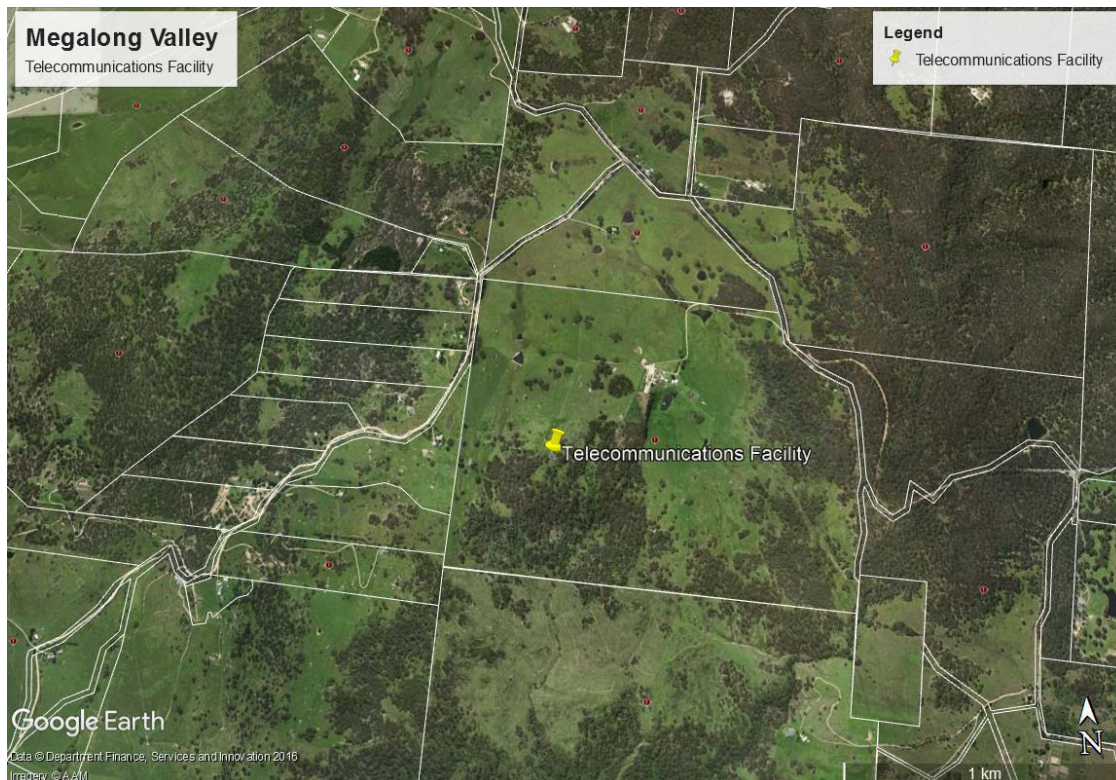


Figure 1: Telstra facility. Source: [Google](#)

This letter provides an additional consultation process for a mobile phone base station at the above address. You may have received a letter regarding this site previously in February of this year. If you did and have already provided a submission, that submission will still be considered as part of this process and there is no need to resend the submission. If you would like to provide an additional submission, please do so using the details found on page 3 of this letter.

Telstra will participate in one of the largest ever expansions of mobile coverage in regional and remote Australia, through the **Federal Government's Mobile Black Spot Programme**.

VISIONSTREAM AUSTRALIA PTY LTD ABN 85 093 384 680
Level 1, 10 Browning Street, WEST END, QLD 4101
Telephone: 1300 745 210
www.visionstream.com.au



Telstra will be building 429 new 3G/4G base stations over the next three years, plus a further 250 4G data only small cells, representing a combined investment of more than \$340 million in regional and remote Australia by Telstra, the Federal Government and several State and Local Governments as well. Telstra has a heritage of nearly 35 years in providing mobile telephony to Australians, by rolling out new base stations and creating new and innovative ways to stretch and improve mobile coverage into the far corners of the nation.

The purpose of this base station is to provide coverage to the Megalong Valley area surrounding the base station at the above address.

Details about the base station and its emissions can be found on the website www.rfnsa.com.au/2785009 or by contacting Daniel Park of Visionstream Australia Pty Ltd directly. The base station will be in compliance with the ACMA EMR regulatory arrangements. All contact details are provided on the attached sheet, "Useful Resources".

As part of Telstra's consultation process, we invite you to provide us with your feedback about this base station. You can do this by contacting us by letter, email or through our website. We will accept comments on the base station until 5pm, **17 September 2019**. We will then prepare an amended consultation report on the outcomes of the consultation process which will be available on the website by **20 September 2019**. Should you wish to receive a copy of this report, please contact us directly.

We trust that you will find the information about this base station on our website informative and are happy to provide you with more details by phone or email.

We remind you that submissions about this base station are due by 5pm, 17 September 2019. If you have previously provided a submission on the base station, you do not need to resend that submission. Any previously made submissions will be considered and included in the consultation plan. We look forward to receiving any additional feedback on the base station.

Yours sincerely

Daniel Park
Senior Town Planner
Visionstream Australia Pty Ltd

Attachments:

1. *Useful Resources*
2. *Additional Information – Planning and EMR compliance regulations*
3. *Environmental (EME) Report*

VISIONSTREAM AUSTRALIA PTY LTD ABN 85 093 384 680
Level 1, 10 Browning Street, WEST END, QLD 4101
Telephone: 1300 745 210
www.visionstream.com.au



Useful resources

Further information about this proposal is available from Visionstream Australia Pty Ltd from:	www.rfnsa.com.au/2785009 RFNSA site No.: 2785009 Email: twp_qldplanning@visionstream.com.au Phone number for Daniel Park: 1300 745 210
You can submit a comment on the base station at:	Address: PO Box 5452, West End QLD 4101
	Attention: Daniel Park Visionstream Pty Ltd Level 1, 10 Browning Street, West End QLD 4101 Email: twp_qldplanning@visionstream.com.au
Information about this base station is available in other languages.	Available on request from contact details provided above.
Support information about: <ul style="list-style-type: none">• Mobile phone base stations• The Base Station Code (C564)• Your rights• Health• Low impact facilities• State planning laws is available from:	www.commsalliance.com.au/mobile-phone-tower-information

Planning regulations

The Carrier considers that this base station does not require council approval because it complies with relevant State planning legislation.



Additional Information – Planning and EMR compliance regulations

Site Name: Megalong Valley
Site Number: 2785009

The site at: **Megalong Valley** is considered to be Complying and Exempt Development in accordance with the *Infrastructure State Environmental Planning Policy (Infrastructure) 2007 (As amended)*. The reasons for this conclusion are based on the classification of the following components of the base station in relation to the Infrastructure SEPP.

Land Use Classification	RU4 Rural Small Holdings
EME/EMR compliance	This base station is designed to comply with the ACMA EMR regulatory arrangements. Further information is available at www.rfnsa.com.au
Facility	Works satisfy the <i>Infrastructure State Environmental Planning Policy (Infrastructure) 2007 (As amended)</i> .
Antenna Type: Panel antenna Colour: Natural Product Colour (Light Grey) Quantity: 6	Schedule 3A Part 1 Exempt Development Item 2
Above Ground Housing: Equipment shelter - Used solely to house equipment used to assist in providing a service for a base station mentioned in Part 1 - Not more than 3m high - With a base area of no more than 7.5m ²	Schedule 3A Exempt Development Item 10.3
Tower - Install one (1) 40.0 m monopole mast plus headframe.	Schedule 3A Complying Development under ISEPP 2007. Item 5.2 (c)
Associated infrastructure Twin Tower Mounted Amplifiers, Radio Units, amplifiers, diplexers, triplexers, mounts, feeders, cable trays and associated infrastructure which is necessary to facilitate the safe operation of the facilities and is authorised by Schedule 3A Exempt & Complying Development in relation to telecommunications facilities. Part 1 Exempt Development, Item 18 (a) & (b).	

VISIONSTREAM AUSTRALIA PTY LTD ABN 85 093 384 680
Level 1, 10 Browning Street, WEST END, QLD 4101
Telephone: 1300 745 210
www.visionstream.com.au