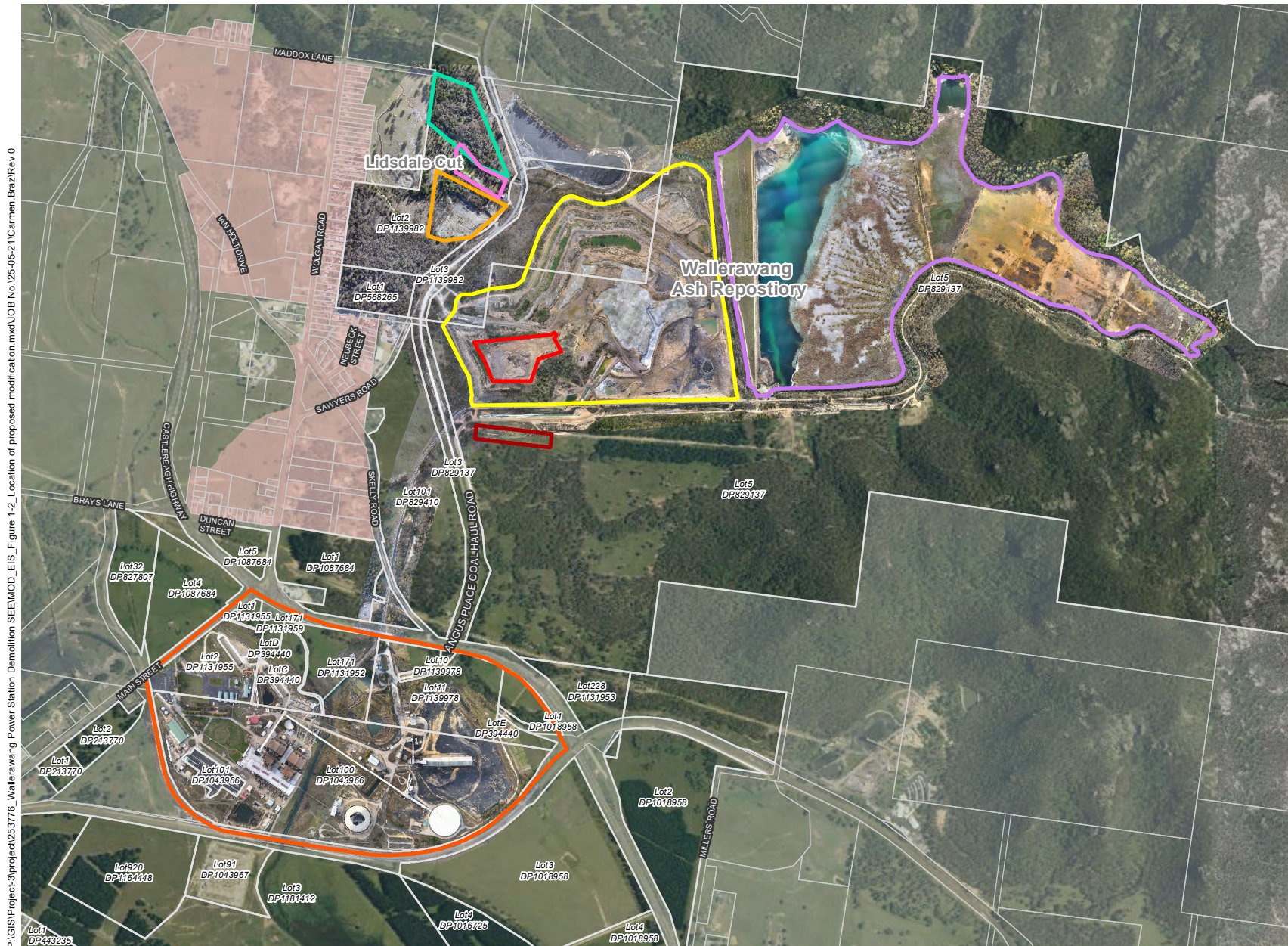




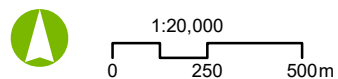
Legend

- Proposed Modification Area
- Approved Asbestos Disposal Area
- Sawyers Swamp Creek Ash Dam
- Kerosene Vale Ash Repository
- Current Asbestos Disposal Area
- Closed Asbestos Disposal Area
- Wallerawang Power Station
- Nearest residential receivers

Source: Aurecon, NSW Spatial Services, Lithgow Local Environmental Plan 2014



P:\GIS\Project-3\project\253776_Wallerawang Power Station Demolition SEEMOD_EIS_Figure 1-2_Location of proposed modification.mxd\JOB No. 125-05-21\Carmin. Brazz\Rev 0



Projection: GDA 1994 MGA Zone 56